

# WORLD LEADERS IN SUPERYACHT TRAINING FOR DECK, ENGINEERING AND INTERIOR

COURSE BROCHURE



WARSASH  
**SUPERYACHT**  
ACADEMY

PART OF


**SOLENT**  
UNIVERSITY

# CONTENTS

---

Welcome	1
About us	2
Guide to using our brochure	6
On-board training solutions	7
The future of maritime training	8
Our facilities	10
Deck qualifications	13
Engineering qualifications	31
Interior and hospitality qualifications	49
STCW, safety and security training	59
Ship handling centre	75
Undergraduate and postgraduate programmes	81
Index of courses	88
How to find us	92
Contact us	93

## JOIN THE BEST TRAINED CREW



Visit [www.warsashsuperyachtacademy.com](http://www.warsashsuperyachtacademy.com)  
for a comprehensive guide to our courses and to find out all about us.



# WELCOME

---

At Warsash, we believe in giving you the best opportunities to succeed in a life-long maritime career by providing you with the highest quality education and training.

Our staff are committed to teaching excellence to ensure you reach your goals. We have invested millions of pounds in new facilities. You'll study in classrooms with cutting-edge learning technology, in specialist marine engineering workshops, ETO labs, on the manned model ship handling lake or Europe's largest maritime simulation centre.

With over 150 courses we provide the largest choice to the yachting industry, from STCW basic safety training to specialist DPA courses, and plenty of course dates including online courses. We offer limited and unlimited CoC programmes where you can transfer from one to the other as suits your career path. As the only maritime university in the UK to offer courses all the way from entry level to PhD, you can have the opportunity to obtain both academic and professional awards.

Our commitment to excellence, our heritage, the quality of our teaching and an unprecedented investment in new training facilities ensure that we continue to deliver the very highest standards of professional maritime training – and to set the standard that others follow.

This brochure lists all available courses at the Academy that are relevant for the yacht sector. Please do not hesitate to contact us if you would like further information. We look forward to welcoming you to Warsash Superyacht Academy.



**Lars Lippuner**  
**Director,**  
**Warsash Maritime School**



# ABOUT US

---

## WHAT WE DO

For over seventy-five years, we have provided first-class education, training, consultancy and research services to the international maritime, superyacht and shipping industries – covering career qualification programmes, STCW safety courses, continuous professional development and more.

By combining our resources, facilities, knowledge and experience, we are uniquely placed to meet the industry demand for crew, officers and captains to be trained to the highest professional standards – working with you to ensure that owners and operators are able to run their superyachts as effectively as possible.

## WHY CHOOSE US

- Strong academic infrastructure and excellent quality assurance, as part of Solent University.
- Brand new high-tech facilities for deck and engineering training.
- State-of-the-art simulation centre with six full-mission bridges and an engine room.
- New GMDSS radio communications and dynamic positioning (DP) facilities.
- Student examination pass rates are consistently high and surpass industry norms.
- Dedicated one-stop maritime training centre with a choice of over 150 courses.
- First-class portfolio of maritime degree programmes, from HND to MSc.
- Over 100 highly qualified and experienced maritime lecturers and technical instructors.
- Yacht-specific training up to 3,000GT and unlimited certification.
- World-leading yacht and powercraft design degree programmes.
- State-of-the-art e-learning, including augmented and virtual reality.
- City centre accommodation with excellent transport links.
- Practical waterside STCW safety training centre incorporating a fire school, helicopter underwater escape trainer, survival pool, medical rooms, pier head with recovery and rescue boats.



## PROFESSIONAL APPROVALS AND ACCREDITATIONS

Our active participation in the work of professional and industry bodies ensures that our staff members are involved in the decision-making processes that shape maritime education and training policy.

These bodies include: the International Maritime Organization (IMO), the Merchant Navy Training Board (MNTB), the Maritime and Coastguard Agency (MCA), the Nautical Institute, the International Association of Maritime Institutions (IAMI), the Institute of Marine Engineering, Science and Technology (IMarEST) and NCFE.

The academy maintains all required professional approvals, accreditations and standards, including:

- Standards of Training, Certification and Watchkeeping for Seafarers (STCW)
- ISO 9001:2015 Standard for the design and delivery of vocational courses, as approved by Lloyd's Register Quality Assurance (LRQA)
- The Office for Standards in Education, Children's Services and Skills (Ofsted)
- The Quality Assurance Agency (QAA)
- The Scottish Qualifications Authority (SQA)
- The Institute of Marine Engineering, Science and Technology (IMarEST)
- OPITO
- The Association of Marine Electronic and Radio Colleges (AMERC).

We are corporate members of the following associations:

- Professional Yachting Association
- International Superyacht Society
- Superyacht UK





## OUR TRAINING PARTNERS

Solent University delivers world-renowned yacht and boat design degree programmes, a suite of international maritime studies courses and a range of specialist support services. Our training partners complement the range of training provision for the superyacht industry.

### **David Store Navigational Management (DSNM)**

DSNM is the leading superyacht navigation management provider, setting the standard for exceptional onboard training programmes for deck teams. Our partnership offers first-class training to superyacht clients worldwide, including DSNM's bespoke onboard Bridge Operation Refresher course.

### **Cyber Prism**

Cyber security attacks are an increasing threat wherever technology is used, with insecure systems and human vulnerabilities putting businesses, ships and clients at risk. Our training partnership with maritime security specialists Cyber Prism offers interactive, practical training for both ship-and shore-based personnel.

### **Luxury Hospitality Academy**

Luxury Hospitality provides luxury hospitality training through Warsash Superyacht Academy for interior and hospitality crew on board luxury yachts and cruise ships. All the courses are accredited through the Professional Yachting Association's (PYA) GUEST programme, the Guidelines for Unified Excellence in Service Training.

### **MedAire**

MedAire is part of the world's largest remote medical advisory and support company (International SOS) and has specialised teams supporting the international luxury yacht sector worldwide, providing on-board medical training and specialist medical consultancy.

### **Porto Montenegro**

Home to the world's largest superyacht berth and 450 additional berths. Our collaboration offers training and internationally recognised qualifications to visiting crews.

### **Marine Matters**

Marine Matters is a dedicated RYA training centre within one mile of our Safety Training Centre at Warsash. It specialises in the professional delivery of training required for the superyacht and commercial workboat sector.



## OUR BUSINESS SERVICES PARTNERS

Our internationally recognised education provision is complemented by the expertise and resources of our reputable partner organisations. By working in collaboration with a distinctive group of established and high-quality service providers, Warsash Superyacht Academy is able to provide a unique range of business services to support the superyacht sector.

With our partners we are able to offer on-board training, which includes a number of mandatory and non-mandatory safety courses, PYA-accredited interior crew modules, medical and security training. We also offer an array of specialist consultancy and service activities, including review of standard operating procedures (SOPs) for deck, engine and interior departments.

Our recruitment and crew management partners specialise in the development of premier crew teams and travel services. Other partners provide comprehensive yacht management for surveys, audits, new construction, sales and purchase, charter and registration services.



# GUIDE TO USING OUR BROCHURE

## **If you are new to yachting**

You have a big decision to make – is it the deck, engineering or the interior department that you are aiming to work for? Consider your options carefully and study the career progression charts on pages 14, 34 and 50.

Be careful not to spend a lot of money upfront unnecessarily for month-long courses leading to certificates that you might not (yet) need. Also, at this stage, you do not know if yachting is for you in the long term, and while it is a very rewarding career choice, there are some challenges, especially in the first few years. You need to be prepared to work very long hours, spend much of your time polishing, share a cabin and accept that you have little influence on your own movements.

If you are sure that a career at sea is what you want to do in the foreseeable future, then you can also consider a merchant navy cadetship as an officer trainee (see pages 26 and 44). This is by far the most cost-efficient and fastest route to achieve an unlimited certification which is in high demand.

## **If you are an existing yacht crew**

You have mastered the all-important step of landing your first job. You have also proven that you are the right person for the job and are now ready to further your career. Study the career progression charts on pages 14, 20, 34, 40, 42 and 48 to find out more about the required (new) mandatory courses and sea-service requirements. Bear in mind that there are also benefits to some of the non-mandatory courses detailed from page 62 onwards. Please note that sea service gained on yachts over 24 metres now also counts towards unlimited certification. You can go straight to an OOW (Unlimited) provided you have enough sea service (see page 24 for definitions), without the need for any RYA or MCA yacht qualifications.



## TOP TIPS FOR NEW CREW

Make sure you record any sea service correctly from day one of your career. If you can, obtain a seaman's discharge book or a PYA service record book. If you do not have either of these record books yet, use certificates of discharge. In addition, always ask for a Sea Service Testimonial (see MSN 1858 Annex E) before you leave a yacht.

If you are keen to become a yacht deck officer, it might be a good idea to start the MCA Yacht Training Record Book which can be downloaded for free from the MCA website.

## **If you are a captain or yacht manager**

You have probably done most of the mandatory courses, so take a look at other MCA-accredited courses such as ISM Internal/Lead Auditor and Designated Person Ashore (page 70) or Company Security Officer (page 72). Also look at some of the high-end simulation courses (page 62) and scaled model ship handling courses (page 78), all of which can be tailored to suit your specific needs.

There are relevant professional development and distance learning programmes within the undergraduate and postgraduate section that you may find interesting (page 81). We also provide bespoke on-board training and, together with our distinct group of partners, are able to offer most of your training requirements.



Amazing onboard training experience which surpassed expectations ...highly recommended. ”

**Christopher**  
Third Officer

# ON-BOARD TRAINING SOLUTIONS

Warsash can provide all of your training requirements at the highest quality by combining the most experienced and knowledgeable specialists in their fields with a passion for the industry.

In combination with our reputable group of training partners (MedAire, David Store Navigational Management, Cyber Prism and Luxury Hospitality), we offer bespoke solutions for on-board training needs. We bring our instructors to you, wherever you may be in the world, to train your crew alongside or at anchor, in a new build phase or during refit.

From firefighting to cocktail-making, engineering to medical care, security training to ECDIS procedures to tender-driving skills, we offer a full spectrum of tailor-made course packages. Some of our most popular programmes include:

- Bridge operation refresher
- ECDIS audit
- Engineering tune-up
- Command and control firefighting
- Medical tune-up
- Elite and luxury hospitality
- Security audit
- Helicopter operation
- Specialist tender operation
- Senior leadership and management.

## BESPOKE PROGRAMMES

In partnership with David Store Navigational Management (DSNM), our aim is to bring the world's premier maritime training instructors to your yacht and shape a training programme around your needs and requirements, delivering:

- Increased safety and compliance
- Higher performance crew
- Improved team cohesion
- Increased crew retention
- A more agile and efficient yacht
- Improved owner/guest experience
- Ongoing WSA expertise and support.

### Bridge Operation Refresher

DSNM offers officers at all levels a refresher on theory and practical elements, as well as an update on the latest regulations and changes. Using your own bridge environment, senior lecturers deliver the bridge training programme to all on board – including the captain – anywhere in the world. Your individual yacht and crew get a detailed programme based on your requirements, a written and oral assessment, detailed feedback and a future action summary.

Please visit <https://maritime.solent.ac.uk/superyacht-training/on-board-training> for more information and contact details.



# THE FUTURE OF MARITIME TRAINING

## World-class simulation centre

Digital systems are key to the future of the maritime industry, and demand is growing steadily for digital skills across the maritime workforce. Our ship and port simulation centre is the largest in the UK and an investment in that digital future, equipping students with the essential skills they'll need to become valued, valuable industry leaders.

We can deliver specialist training for:

- Deck and engineering officers
- Tug masters/small craft and crew
- Pilots and harbourmasters
- VTS operators and supervisors
- Tanker terminal operators
- Port and harbour safety
- Onshore and offshore crane operations
- Anti-pollution, HNS/hazmat
- GMDSS GOC, ROC and other radio courses
- ISPS security.

## Train on the latest technology

Our world-class sim centre offers the very latest technology tailored to match those you'll be using at sea using state-of-the-art 360° bridge simulators with integrated navigation and engine training. We have invested in training systems for dynamic positioning, vessel traffic management, ice navigation, offshore and onshore crane handling, and you'll have access to our multi-million-pound facility, offering:

- 8 full-mission navigational bridges.
- Full-mission engine simulator and HV training.
- Broad library of ship types, including two superyacht models – allowing realistic training of yacht personnel.
- Unrestricted access to Transas' ship models and navigational areas.
- GMDSS radio communications and VTS suites.
- 2 ECDIS suites and 4 multi-purpose desktop simulation classrooms.
- Full-mission dynamic positioning simulator and 6 DP stations.
- 4 debriefing rooms/classrooms.



### Studying remotely

Throughout the pandemic, Solent University's Warsash Maritime School has increased and enhanced the remote learning opportunities it offers.

Our online courses are designed and delivered with seafarers in mind – covering everything from cyber security basics, PDSD, HELM, safety management and small vessel engineering, all the way to programmes which lead to OOW Unlimited.

We also offer a part-time postgraduate diploma in international trade and maritime law, flexibly designed to fit around yacht crew's busy working schedule.

### New safety training centre

At our historic home in Warsash, we have plans to build two new shoreside safety training buildings –incorporating dedicated teaching spaces and a purpose-built indoor pool, which will support helicopter underwater escape training and other pool-based safety programmes.

Our medical suite will also receive the very latest in equipment and teaching technologies, whilst there are plans to build a brand new, expanded fire training facility to incorporate the very latest in firefighting equipment, working to optimum environmental standards.



The seafarers who will train here are the future of our maritime nation, and this centre should make it better and safer for all. ”

**Sir Michael Bibby**  
President of the UK Chamber of Shipping

# OUR FACILITIES

## The top training destination

As the UK's centre of maritime excellence, the range, scale and quality of training and support facilities offered by the academy for crew in the superyacht industry is unmatched worldwide.

Our School training facilities are located in Southampton city centre, Warsash and Romsey, and students have access to all the resources and benefits offered by Solent University, including its innovative virtual campus and online learning environment.

## SOUTHAMPTON

### Main campus, East Park Terrace

#### Maritime Simulation Centre

- Eight full-mission navigational bridges – six 270-degree and two 360-degree displays.
- Full-mission engine room simulator.
- High voltage simulator and emergency switchboard.
- Crane and tug simulator.
- Four multi-purpose desktop simulations classrooms, incorporating:
  - Dynamic positioning
  - Electronic chart display
  - Liquid cargo operations simulation
  - Over 50 part-task simulators
  - Vessel traffic services (VTS).
  - Debriefing classrooms with replay capability.
  - Examination room.

#### Radio communications

- Two GMDSS radio communications suites.
- A range of live installations and simulators for every student.
- Classrooms for the underpinning theory lectures.

#### Learning resources

Dedicated classrooms for maritime education and professional progression tuition.

- Extensive nautical reference material at Solent University's main library.
- Full access to IT resource suites and benefit of SOL, the Solent Online Learning platform.

#### Catering

Plenty of food choices on campus, including the Dock restaurant, East Park Deli and Costa Coffee.



### Sports and leisure

- Access to our sport centre on the main campus.
- Fitness classes, gym memberships, and state-of-the-art football venues and indoor pitches.

### St Mary's campus, Chapel Road

#### Engineering workshops

- Extensive facilities for bench/hand fitting and the use of machine tools, welding, marine power plant and electrical maintenance.
- Specialised control laboratory for electronic navigational systems operations and the maintenance of radars, navigational aids and control systems.
- Laboratories for thermodynamics, mechanical and control engineering experiments.

#### Seamanship centre

- Effective learning environment for practical seamanship to Efficient Deck Hand (EDH) standard.
- Equipment ranges from pilot ladders and mooring arrangements to scale models of derricks and hatches.

#### Accommodation

- Selection of campus and Southampton-based residences.
- Choice of single and twin study-bedrooms, flats and local guest house accommodation.
- All campus rooms are safe and secure, and allow free online access to the University network.



## WARSASH

### Safety Training Centre, Newtown Road

#### Survival craft facilities

- Purpose-built pier head and floating pontoons for the launch and recovery of lifeboats, fast rescue boats and rigid inflatable boats (RIBs) to meet international safety training standards.
- Pool facility for STCW Personal Survival Techniques (PST) 'in-water' tuition, and a variety of life rafts and survival equipment.
- Helicopter Underwater Escape Trainer (HUET) and winch facility for simulated rescue by helicopter.

#### Fire School

- Our purpose-built fire fighting training facility provides a realistic environment to learn the vital techniques of fighting fires at sea.
- Three-storey steel ship/offshore module for live fire training, utilising real solid and liquid fuels in creating a safe, yet hot and realistic, environment in which to train.
- Helicopter fire fighting and rescue unit.
- Full breathing apparatus with a simulated double bottom tank, fire pits, fire screen and other devices for simulating a variety of fire types.

#### Medical training

- Dedicated provision of STCW-certified first-aid and medical courses.
- Hands-on experience with the equipment found on board ship.



## ROMSEY

### Ship Handling Centre, Timsbury Lake

- The only scaled model ship handling training facility in the UK.
- Fleet of 12 scaled ship models which represent several ship types.
- Training and assessment in a variety of ship handling challenges for large yacht deck officers.
- 10-acre lake includes harbour areas and numerous berths, port entry scenarios, berthing manoeuvres, canal transits, narrow channels, critical bends and turning basins.

£43 MILLION

SOLENT UNIVERSITY'S INVESTMENT  
INTO MARITIME FACILITIES



## WHO TO CONTACT/ BOOKING A COURSE

For further information about our deck courses, please contact our admissions and recruitment team or visit our website.

T. +44 (0)23 8201 5004

E. [warsash.admissions@solent.ac.uk](mailto:warsash.admissions@solent.ac.uk)

To book a course, please first check availability online at <https://maritime.solent.ac.uk/courses/deck>



# DECK QUALIFICATIONS

Our UK Maritime and Coastguard Agency (MCA)-approved training programmes for captains, deck officers and deck hands are job-specific and allow students to build professionalism, earning potential and capability to progress quickly in their careers.

Competency training is delivered in our purpose-built bridge simulators, which replicate the handling of a large superyacht. Some modules may be delivered through on-board training or in overseas locations. Warsash has approval from the MCA to offer all of the course modules and programmes required to obtain an internationally recognised Certificate of Competency (CoC).

All of our deck courses are designed to equip captains and officers with the necessary skills to command and operate superyachts, including all modern navigational techniques, as well as legal and technical requirements.

## SUMMARY OF COURSES

### Entry Level

- STCW Basic Safety Training Week
- Efficient Deck Hand (EDH)

### Officer of the Watch (Yachts) – Less than 3,000GT

- Officer of the Watch (Yachts) – Navigation and Radar
- Officer of the Watch (Yachts) – General Ship Knowledge
- Human Element, Leadership and Management (HELM) – Operational Level
- Electronic Chart Display and Information Systems (ECDIS)
- Efficient Deck Hand (EDH)
- Proficiency in Medical First Aid
- Proficiency in Survival Craft and Rescue Boats
- GMDSS General Operator's Certificate (GOC)

### Chief Mate (Yachts) – Less than 3,000GT

- Advanced Fire Fighting
- Electronic Chart Display and Information Systems (ECDIS)
- Human Element, Leadership and Management – Management Level

### Master (Yachts) – Less than 3,000GT

- Master (Yachts) – Navigation Radar and ARPA Simulator
- Master (Yachts) – Business and Law
- Master (Yachts) – Seamanship and Meteorology
- Master (Yachts) – Stability
- Master (Yachts) – Celestial Navigation
- Electronic Chart Display and Information Systems (ECDIS)
- Human Element, Leadership and Management (HELM) – Management Level
- Proficiency in Medical Care
- Updated Proficiency in Medical Care

### Officer of the Watch – Unlimited Certification

- Officer of the Watch (HNC/Exam Route) – For Experienced Seafarers/Yacht Personnel
- Deck Cadet – Honours and Foundation Degree Programmes
- Deck Cadet – Higher National Diploma Programme
- MCA Signals Examination
- Efficient Deck Hand (EDH)
- Electronic Chart Display and Information Systems (ECDIS)
- Human Element, Leadership and Management (HELM) – Operational Level
- Proficiency in Medical First Aid
- Proficiency in Survival Craft and Rescue Boats
- Advanced Fire Fighting
- GMDSS General Operator's Certificate (GOC)

### Chief Mate – Unlimited Certification

- Master and Chief Mate (HND/Exam Route) – For Experienced Seafarers
- Chief Mate (Examination Route) – For officers who followed an HND cadetship to first certification
- Chief Mate (Post FD Route) – For officers who followed the FD cadetship to initial certification
- BSc (Hons) Maritime Sciences top up
- Electronic Chart Display and Information Systems (ECDIS)
- Human Element, Leadership and Management (HELM) – Management Level
- Proficiency in Medical Care
- Updated Proficiency in Medical Care

### Master – Unlimited Certification

- Master's Orals
- Updated Proficiency in Medical Care
- HELM (M)

# DECK OFFICER (YACHTS) – PROGRESSION CHART (INCL . STCW 2010 MANILA AMENDMENTS)

## Entry Level/Deck Hand

- Personal Survival Techniques
- Fire Prevention and Fire Fighting
- Elementary First Aid
- Personal Safety and Social Responsibilities
- Proficiency in Security Awareness

**Yacht/Sea Service**  
6 months' sea service  
Yacht Training Record Book

**Watch Rating Certificate**

**Yacht/Sea Service**  
6 months' sea service

Efficient Deck Hand (EDH)

Proficiency in Survival Craft and Rescue Boats

**Yacht/Sea Service**  
12 months' sea service

**Able Seafarer Deck**

**Yacht/Sea Service**  
36 months' yacht service  
365 days' sea service Hold  
Yachtmaster Coastal Yacht  
Training Record Book

Navigation and Radar  
(OOW Yachts)

General Ship Knowledge  
(OOW Yachts)

Efficient Deck Hand (EDH)\*

Proficiency in Survival  
Craft and Rescue Boats

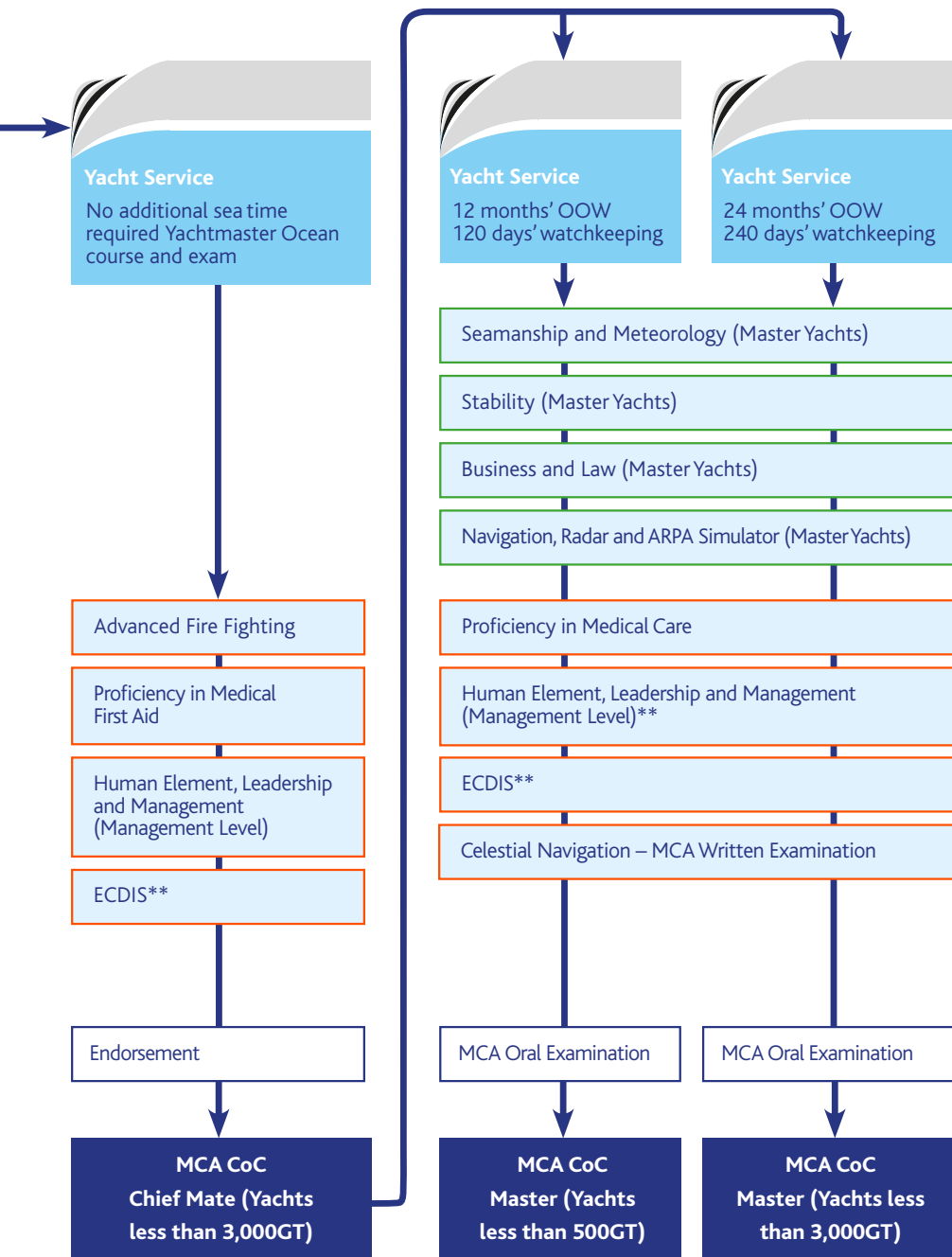
Human Element, Leadership  
and Management  
(Operational Level)

GMDSS GOC

ECDIS

MCA Oral Examination

**MCA CoC  
Officer of the Watch  
(Yachts less than 3,000GT)**



Certification structures can always change, so please check [www.warsashsuperyachtacademy.com](http://www.warsashsuperyachtacademy.com) for the latest version. \*Must have been held for at least 18 months before the issue of OOW CoC. \*\*A requirement if not already completed at chief mate or OOW level. © Warsash Superyacht Academy, 2021



## PATHWAY TO CERTIFICATION

The officer of the watch (OOW) is responsible for the safety of the yacht, its crew and guests during the period of his or her watch. It is a critical role which requires a substantial amount of training and sea experience. Entry-level candidates currently need to complete an RYA or IYT Yachtmaster Coastal course which covers the basics of yacht handling, pilotage and seamanship.

### IMPORTANT INFORMATION

From 1 January 2017 the EDH certificate must have been held for at least 18 months before the issue of the OOW – Yachts less than 3,000GT Certificate of Competency.

## ■ ENTRY LEVEL

### Efficient Deck Hand (EDH)

**Training towards:** Deck Hand/Officer of the Watch  
**Course duration:** 5 days

A theoretical and practical course that provides an understanding of shipboard organisation and operations, pilot ladders and means of access, cargo work, safety and seamanship, including knots, splicing, whipping and seizing, simulating a variety of fire types.

### ■ STCW Basic Safety Training Week

**Training towards:** Deck Hand/Officer of the Watch  
**Course duration:** 5 days

Our Basic Safety Training Week (BSTW) meets the appropriate standard of competence in Section A-VI/1 of the STCW Code. The five STCW courses run from Monday to Friday and include: Personal Safety and Social Responsibilities, Fire Prevention and Fire Fighting, Personal Survival Techniques, Elementary First Aid, and Proficiency in Security Awareness.



## OFFICER OF THE WATCH (YACHTS) – LESS THAN 3,000GT

### ■ Officer of the Watch (Yachts) – Navigation and Radar

**Training towards:** Officer of the Watch – Yachts less than 3,000GT

**Course duration:** 15 days

This course includes lectures and exercises covering chart work, tides and radar plotting. Use of electronic navigational aids such as GPS, AIS, ECDIS and navigational instruments are explained, with an emphasis on radar and ARPA. **Note:** There is a written examination at the end of the second week.

Students develop and practise navigation and collision avoidance skills in our multi-purpose bridge simulator. Successful assessment of competency is necessary before issue of a simulator course certificate.

Students who enrol on this course are automatically given access to online material specifically relating to this navigation and radar syllabus. Course notes and other preparatory material are available to view and download.

Preparation for this intensive course is essential, and made easy by the use of the resources on this virtual learning environment. A pre-course workbook is available for completion prior to attending the course, which is highly recommended. There are worked examples and quizzes for students to access in their own time during the course.



### ■ Officer of the Watch (Yachts) – General Ship Knowledge

**Training towards:** Officer of the Watch – Yachts less than 3,000GT

**Course duration:** 5 days

This classroom-based course is an introduction to ship construction, stability, meteorology and seamanship, watchkeeping, preparation for sea and maintenance.



I look forward to studying at Warsash again soon and would also like to extend my gratitude to all of the tutors who have helped me with the various modules. It should be noted that Warsash deservedly has an outstanding reputation amongst the yachting fraternity. ”

**Jonathan Lloyd**  
Master Yachts Less than 3,000GT

## CHIEF MATE (YACHTS) – LESS THAN 3,000GT

For those who have fulfilled all the requirements to attain their Officer of the Watch certification, the completion of the following further courses enables them to apply for Chief Mate certification:

- Advanced Fire Fighting
- Proficiency in Medical First Aid
- HELM (M) – Human Element, Leadership and Management (Management Level)
- ECDIS – Electronic Chart Display and Information Systems
- RYA/IYT Yachtmaster Ocean course and exam.

The Chief Mate (Yachts) qualification is an endorsement of the Officer of the Watch (Yachts) certificate and does not need an additional MCA oral examination. Candidates have the option of either taking their Officer of the Watch (Yachts) oral exam first and then supplying evidence of completion of the above courses, or alternatively supplying all certificates before attending the MCA oral examination to obtain the Chief Mate (Yachts) endorsement directly.

**Note:** Any merchant navy certification will supersede any yacht certification.

### STCW 2010 CHIEF MATE

The STCW Convention 1978 has been amended by the 2010 Manila Amendments. When applying for the Chief Mate (Yachts less than 3,000GT) certificate, candidates are required to complete a five-day Human Element, Leadership and Management (Management Level) course.

This is in addition to a five-day MNTB MCA-approved generic ECDIS course. All yacht certificates will be issued with a negative ECDIS enforcement if they do not hold an ECDIS certificate when they are revalidated. This also applies to OOW (Yachts less than 3,000GT) and they must have an ECDIS certificate.

Please also see MSN 1858 and MSN 1861:  
[www.gov.uk/ships-cargoes/m-notice](http://www.gov.uk/ships-cargoes/m-notice)



## MASTER (YACHTS) – LESS THAN 3,000GT

### ■ Master (Yachts) – Navigation Radar and ARPA Simulator

**Training towards:** Master (Yachts) – less than 500GT/3,000GT

**Course duration:** 10 days

This course includes passage planning, the use of ECDIS, knowledge of collision regulations, practice in search and rescue, and full understanding and expertise in the use of radar and ARPA. During the course, 30 hours are spent in our multi-purpose bridge simulator where assessment is carried out during exercises.

**Note:** Successful completion allows the student to sit a written examination at the end of week two.

### ■ Master (Yachts) – Business and Law

**Training towards:** Master (Yachts) – less than 500GT/3,000GT

**Course duration:** 5 days

This course starts with a basic introduction to civil and criminal law, negligence and duty of care. Other subject areas include an introduction to international law, safety management, certification, documentation, safety requirements and sea worthiness.



## STCW 2010 MASTER

When applying for the Master (Yachts) – less than 500GT/3,000GT certificate, candidates are required to complete the five-day Human Element, Leadership and Management (Management Level) course.

This is in addition to completing a five-day MNTB MCA-approved generic ECDIS course. All yacht certificates will be issued with a negative ECDIS enforcement if they do not hold an ECDIS certificate when they are revalidated.

Candidates will need to pass the MCA written examination in celestial navigation within one year prior to taking the MCA oral exam. Please also see MSN 1858 and MSN 1861: [www.gov.uk/ships-cargoes/m-notice](http://www.gov.uk/ships-cargoes/m-notice)

### ■ Master (Yachts) – Seamanship and Meteorology

**Training towards:** Master (Yachts) – less than 500GT/3,000GT  
**Course duration:** 5 days

This course includes five sections covering seamanship, navigation (including watchkeeping procedures), meteorology, MARPOL (including IMO conventions concerning safety of life and environmental protection) and Code of Safe Working Practices.

### ■ Master (Yachts) – Stability

**Training towards:** Master (Yachts) – less than 500GT/3,000GT  
**Course duration:** 5 days

This course covers the basic principles of hydrostatics, hull form, and static and initial stability. It also includes the interpretation of curves of statical stability, ships' stability data and calculations involving loading and shifting of weights, dry docking, longitudinal stability and basic calculations.

### ■ Master (Yachts) – Celestial Navigation

**Training towards:** Master (Yachts) – less than 500GT/3,000GT  
**Course duration:** 5 days

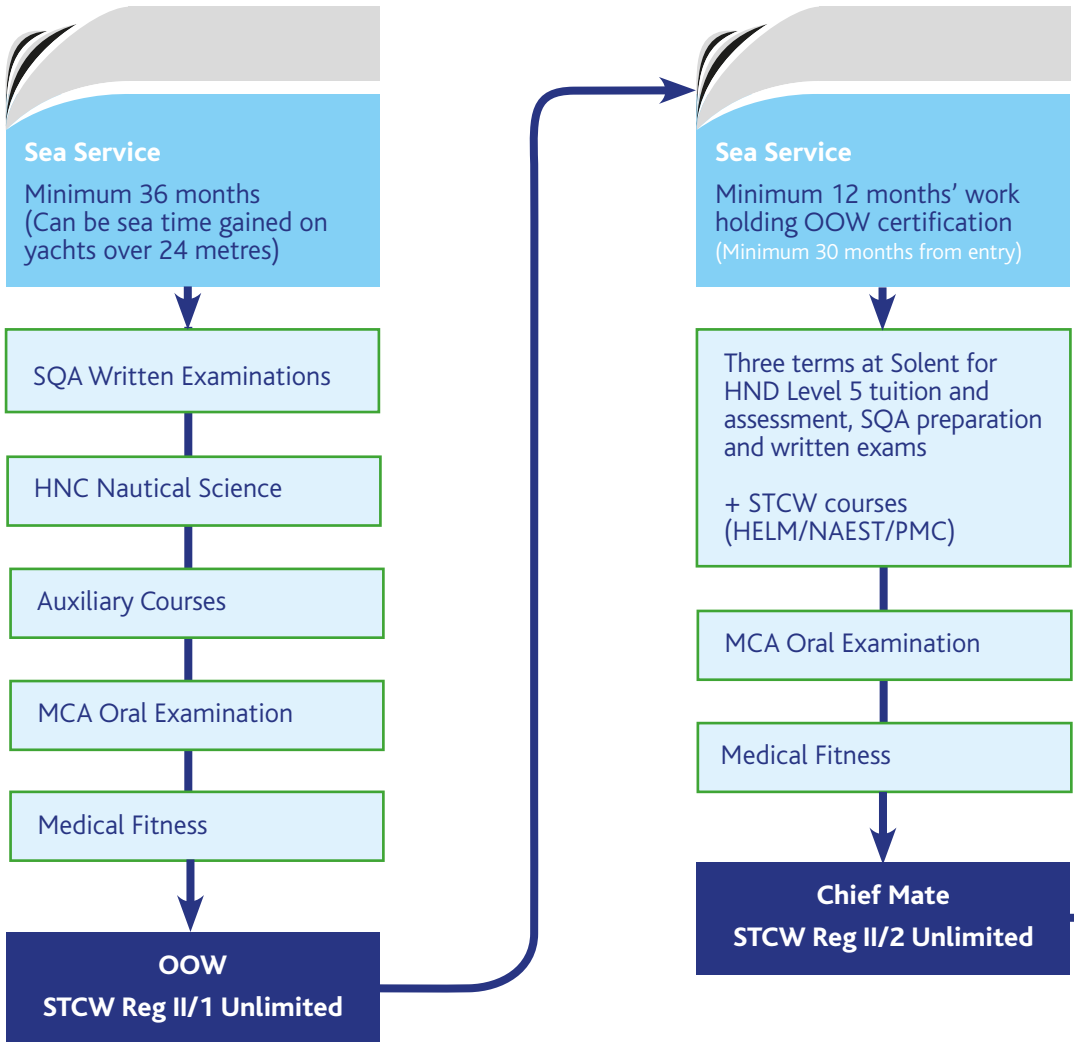
This course includes the principles of how to use celestial bodies (sun, moon, planets and stars) to fix a position, how to determine latitude and how to determine compass error by celestial means. The course prepares candidates in an ideal way to sit the MCA written examination in celestial navigation on the last day.

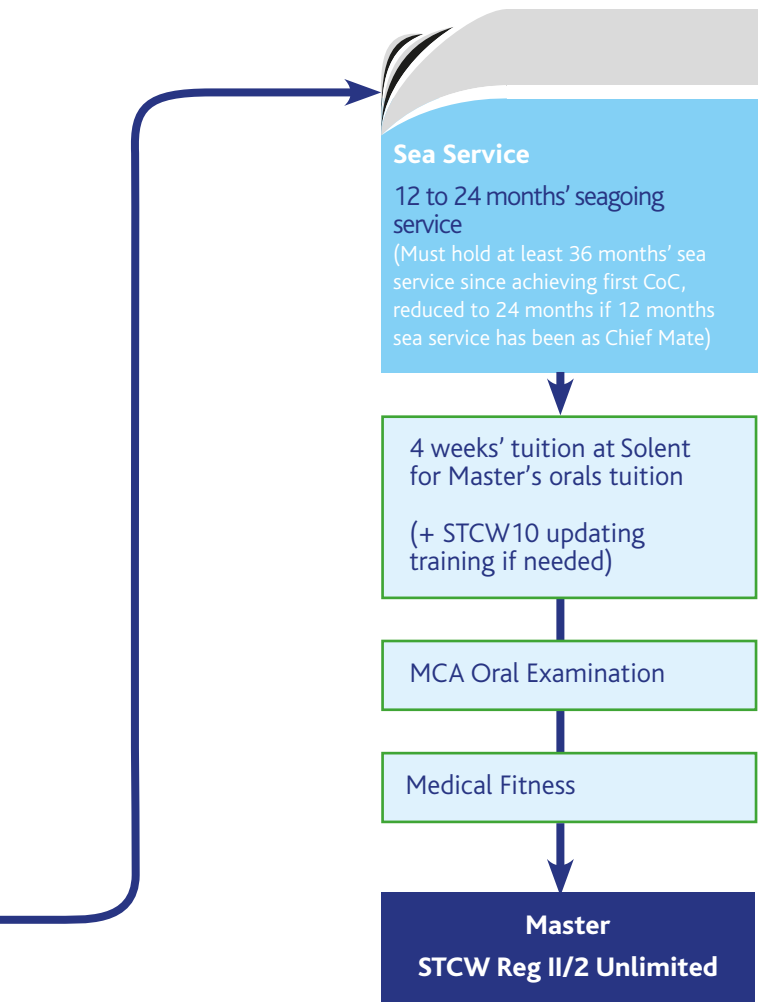


My experience has been excellent in every aspect, and the premises are of the highest standard. ”

**Kostis Sklavounos**  
Officer of the Watch (Yachts) student

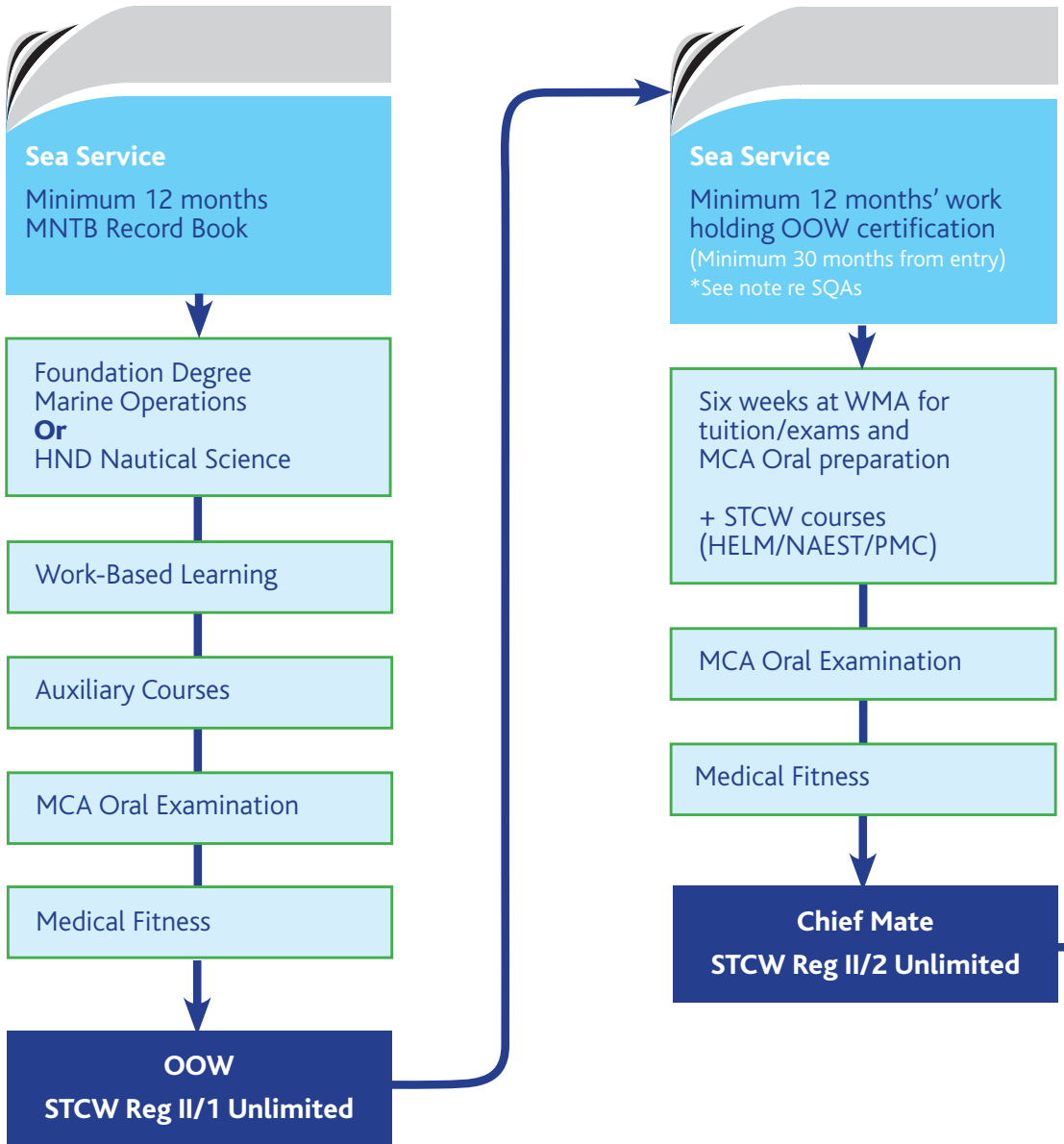
# DECK OFFICER (UNLIMITED CERTIFICATION) – PROGRESSION CHART FOR EXPERIENCED SEAFARER ROUTE

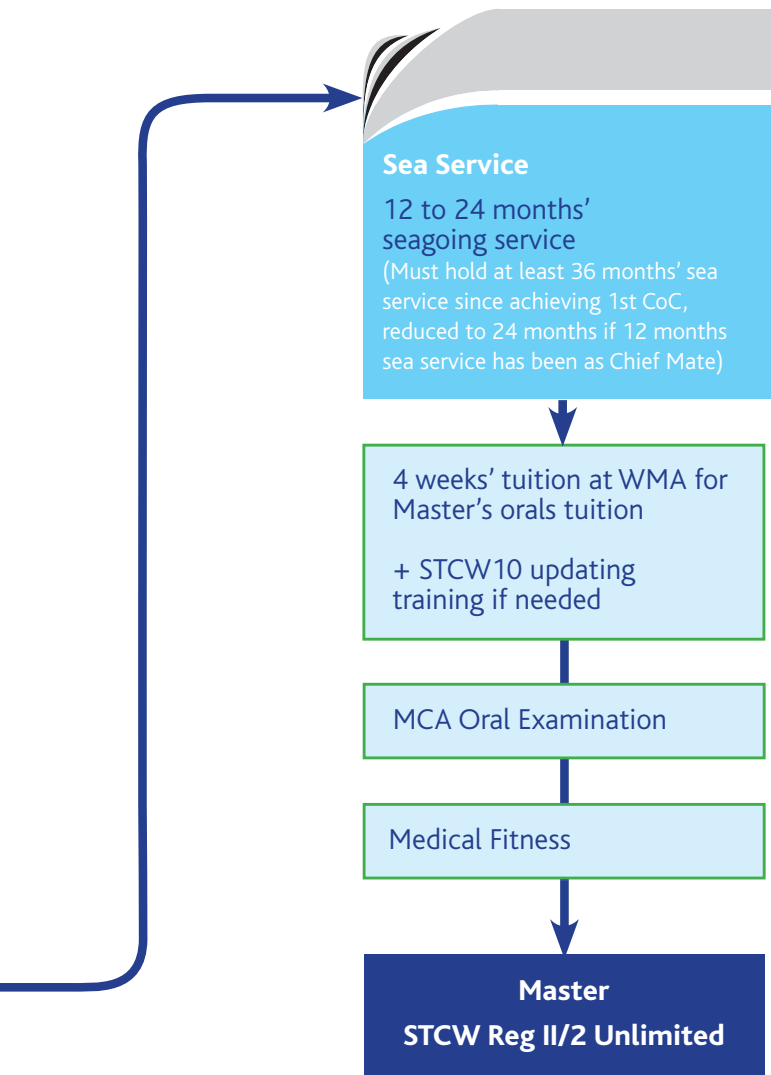




**Note:** Information related to certification requirements has been interpreted from MSN 1856 (M). Certification structures can always change, so please check [www.warsashsuperyachtacademy.com](http://www.warsashsuperyachtacademy.com) for the latest version. © Warsash Superyacht Academy, 2021

# DECK OFFICER (UNLIMITED CERTIFICATION) – PROGRESSION CHART FOR OFFICER CADET ROUTES





**Note:** Information related to certification requirements has been interpreted from MSN 1856 (M) Training and Certification Guidance. \*Officer cadets enrolled after 1 September 2015 will have to undertake SQA written exams for Chief Mate certification; those enrolled prior to 1 September 2015 will be exempt from these SQA written exams until 1 September 2022. Certification structures can always change, so please check [www.warsashsuperyachtacademy.com](http://www.warsashsuperyachtacademy.com) for the latest version. © Warsash Superyacht Academy, 2021



## HOW TO OBTAIN AN OOW UNLIMITED WHEN WORKING IN YACHTING

Now that sea time gained on board yachts counts towards OOW Unlimited, continuing a career along the unlimited route is easier than ever.

There are many reasons to consider obtaining an OOW Unlimited Certificate of Competency (CoC):

- Work as a deck officer on any vessel, including yachts above 3,000GT (which will be classed as passenger yachts or as passenger ships).
- Work on yachts where the yacht asks for officers with unlimited certification (even if less than 3,000GT).
- Optimise chances for career success and gain the edge when applying for top positions within the yacht sector.
- Increase knowledge base, as well as gaining an academic qualification.
- Open up additional maritime career options outside the yacht sector.
- Eligible to top-up your CoC as an Officer of Watch into a full academic honours degree in Maritime Sciences.

The ability to progress to Master Mariner (Unlimited) is the pinnacle of maritime education and training. Many recruitment agencies are reporting that deck officers with unlimited certification AND yacht experience are in very high demand.



Achievement of unlimited certification is less daunting than it might initially seem. Sea service gained on yachts over 24 metres does count towards unlimited certification.

A crew member with 36 months' (1,080 days) qualifying sea service on a yacht over 24 metres and 80GT, who has been involved in bridge watchkeeping duties for at least six months, will be able to apply for a Notice of Eligibility to take a course leading to an OOW Unlimited CoC.

Sea service is counted in the following way:

- All actual sea service plus stand-by service (no more than 14 consecutive days and no longer than the previous voyage for each period of standing by) plus yard time (to a maximum of 90 days). The total must equal or exceed 1,080 days.
- Further periods of stand-by may be counted, but only when the vessel returns after proceeding to sea on passage.

Candidates should ensure that they apply using the MCA form MSF 4274 but submit yacht sea service testimonials in accordance with MSN 1858 Annex E.



**Note:** No RYA/IYT Yachtmaster or Officer of the Watch (Yachts less than 3,000GT) is required to be eligible to attend this programme.

The overall duration of the programme is 27 weeks. HNC tuition and assessment lasts for 23 weeks and includes bridge watchkeeping, navigation, chartwork, tides, emergency response and communications, cargo work, meteorology, ship stability, ship construction, and law and management. At the end of the course the student will also sit two SQA written examinations – in Navigation and in Stability and Operations. On successful completion, a Higher National Certificate (HNC) Nautical Science will be awarded.

**Note:** You can now do the first four and a half months of the six-month programme online (October start only).

The programme also includes the STCW short courses, MCA Signals, EDH, HELM(O) and NAEST(O), as well as examination preparation for the two written SQA examinations and the MCA oral examination. We will also offer support in securing an oral examination slot at the end of the course. **Note:** By completing NAEST(O) you will also be issued with an MCA-approved generic ECDIS certificate. The OOW (Unlimited) CoC can be endorsed to also serve as a Chief Mate (Yachts less than 3,000GT) by additionally completing the five-

day Human Element, Leadership and Management (Management Level) course.

Over the years we have had many candidates coming through with a yacht background. They tend to excel on this programme and regularly achieve outstanding results.

### Superyacht deck officer cadetship

An alternative route to achieving OOW Unlimited is via an officer cadet training scheme tailored to the superyacht industry. It progresses a novice to merchant navy Officer of the Watch certification level through a combination of academic studies and seagoing experience.

In collaboration with Trinity House, the three-year sponsored academic training scheme leads you to obtaining an Honours Degree in Nautical Science or Foundation Degree in Marine Operations. Applicants requiring sponsorship do need to be eligible for funding.

To find out more, visit:

<https://maritime.solent.ac.uk/careers/officer-cadet-training>



## FOR YOUR INFORMATION

### Deck OOW (Unlimited)

Those who wish to obtain an STCW-II/1 unlimited Officer of the Watch Certificate of Competency via the examination route for experienced seafarers can now do the first four and a half months of the six-month programme online (October start only).

### Honours Degree Top-Up

We believe in giving seafarers the (academic) credit they deserve. That's why we recently approved top-ups that account for the hard study that seafarers already undertake for their 2nd CoC. The new option allows you to obtain a degree in BSc (Hons) Maritime Sciences or BEng (Hons) Maritime Engineering at the same time as meeting your CoC requirements. Modules can either be studied on campus or remotely and part-time whilst continuing to work.

## OFFICER OF THE WATCH – UNLIMITED CERTIFICATION

### Officer of the Watch (HNC/Examination Route) – For experienced seafarers/yacht personnel

**Training towards:** OOW (Unlimited) STCW A-II/1

**Course duration:** 27 weeks plus MCA oral exam

This course enables candidates to achieve STCW Officer of the Watch certification by the Scottish Qualification Authority (SQA) examination route. Candidates will receive tuition and assessment in HNC (Nautical Science) units and NAEST and HELM (Operational Level) courses, Efficient Deck Hand (EDH), as well as preparation for the SQA examinations in Navigation, and Stability and Operations, and MCA Signals and oral examinations.

Candidates with at least 36 months of sea time on yachts over 24 metres will be eligible to enrol on this course.

### Deck Cadet – Honours Degree Route

**Training towards:** OOW (Unlimited) STCW A-II/1

**Course duration:** 3 years

Warsash offers a full deck officer cadet programme leading to the award of an MCA Deck Officer's Certificate of Competency (STCW II/I OOW), a Level 6 Honours Degree (BSc) in Nautical Science providing you a direct pathway later in your career to specialise at Level 7 (MBA or Masters).

### Deck Cadet – Foundation Degree Route

**Training towards:** OOW (Unlimited) STCW A-II/1

**Course duration:** 3 years

The Academy offers a full deck officer cadet programme by a degree route, leading to the award of an MCA Deck Officer's Certificate of Competency (STCW II/I OOW), a Foundation Degree (FdSc) in Marine Operations and a direct top-up pathway to BSc (Hons) Maritime Sciences.

### Deck Cadet – Higher National Diploma Route

**Training towards:** OOW (Unlimited) STCW A-II/1

**Course duration:** 3 years

The Academy offers a full deck officer cadet programme by a Higher National Diploma (HND) route, leading to the award of an MCA Deck Officer's Certificate of Competency (STCW II/I OOW), and the Higher National Diploma (HND) in Nautical Science. HND graduates may progress to the BSc (Hons) Maritime Sciences after gaining further industrial experience.



Warsash Superyacht Academy continues to set the standard with its investment in state-of-the-art facilities and an expert team of lecturers.

**Liam Dobbins**  
Director, Wilsonhalligan

## YOUR FASTEST AND MOST EFFICIENT ROUTE TO AN OOW UNLIMITED

If you already have 36 months' sea service (see page 24 for definition) on yachts over 24 metres and 80GT, you have the opportunity to obtain the OOW Unlimited through the HNC Experienced Seafarer route. The programme duration is 27 weeks (including optional short courses, if required). If you have little or no sea service so far, a three-year officer cadet training scheme will be the fastest route.

To find out more about obtaining an OOW Unlimited, see pages 24 to 26.

## CHIEF MATE – UNLIMITED CERTIFICATION

### ■ Master and Chief Mate (HND/Examination Route) – For experienced seafarers

**Training towards:** Chief Mate (Unlimited) STCW A-II/2  
**Course duration:** 6 months plus 7 to 13 weeks' distance learning

This course enables candidates to achieve Chief Mate certification by the SQA examination route. You will receive tuition and assessment in order to achieve the award of the HND in Nautical Science. NAEST(M) and HELM (Management Level) courses and preparation for the SQA examinations in Navigation and Ship Stability, and MCA Signals and orals examinations are all included.

### ■ Chief Mate (Post Hons/FD Route) – For officers who followed the Hons/FD cadetship to initial certification

**Training towards:** Chief Mate (Unlimited) STCW A-II/2  
**Course duration:** 6 weeks plus MCA orals exam

This course enables candidates who have successfully completed a deck officer cadetship via the Honours Degree (BSc) and Foundation Degree (FdSc) route to achieve Chief Mate certification. It includes completion of NAEST(M) and HELM (Management Level) courses, as well as preparation for the MCA oral examination.

### ■ Chief Mate (Examination Route) – For officers who followed an HND cadetship to first certification

**Training towards:** Chief Mate (Unlimited) STCW A-II/2  
**Course duration:** 14 weeks plus MCA orals exam

This course enables students to achieve Chief Mate certification by the SQA examination route. Students will receive tuition in command management, NAEST(M) and HELM (Management Level) courses, preparation for the SQA examinations in Navigation and Ship Stability, and MCA Signals and oral examinations.

## MASTER – UNLIMITED CERTIFICATION

### ■ Master's Orals

**Training towards:** Master (Unlimited) STCW A-II/2  
**Course duration:** 4 weeks

This course enables students to achieve Master (Unlimited) certification. Students will receive tuition and guided study in preparation for the MCA oral examination.



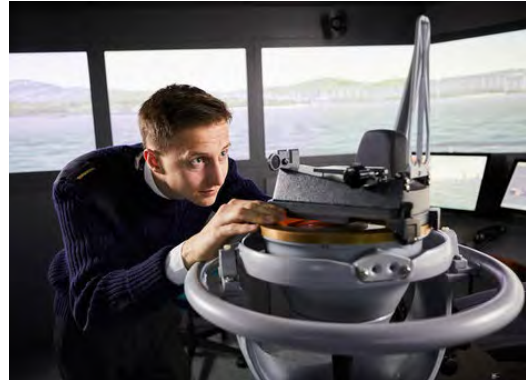
## NEW DP COURSES

Dynamic Positioning is a specialist skill for masters and deck officers. Our full mission dynamic positioning simulator and 6DP stations provide excellent facilities for our three new courses.

### ■ Dynamic Positioning Induction (Basic)

**Training towards:** Professional certificate  
**Course duration:** 5 days

Students can expect this course (accredited by The Nautical Institute) to provide: the acquired knowledge of the principles of Dynamic Positioning (DP); a basic understanding of how to set up a DP System and the practical operation of associated equipment, including position reference systems. Students aim to be able to recognise the various alarm, warning, and information messages, and relate to DP installation ship systems and operations to existing environmental conditions.



### ■ Dynamic Positioning Simulator (Advanced)

**Training towards:** Professional certificate  
**Course duration:** 5 days

Students upon completion of the advanced DP course (accredited by The Nautical Institute) aim to be able to: carry out operational planning; risk assessment and hazard identification tasks; set up the DP system for a particular task; operate the communications; analyse the trends; discuss systems failures; decide on courses of action because of systems failures; react to alarms and printer readout; initiate DP Alert status alarms; react to all events occurring; operate the desk under normal and pressured conditions; practice effective teamwork and apply the lessons learned.

### ■ Dynamic Positioning Revalidation

**Training towards:** Professional certificate  
**Course duration:** 5 days

The course is intended for those who have already been issued a DPO Certificate from the Nautical Institute but are unable to revalidate their DPO Certificate if they have not gained sufficient DP sea time. The overall course aim is to update the DPOs with the latest rules and regulations, position references and sensors, known DP incidents and lessons learned.



## AUXILIARY COURSES

STCW Basic Safety Training is mandatory for everyone working on large vessels of more than 24 metres. Our portfolio of entry-level and advanced safety and security courses is fully compliant with STCW 2010 Code (see pages 59–71). Candidates may also want to consider our core MCA modules in key areas such as navigation and radar, safety management, ship handling and ship security.



### Summary of auxiliary courses

- Ship Handling (Manned Models)
- Advanced Ship Handling (Manned Models)
- Formal Assessment of Ship Handling
- Ship Handling and Emergency Procedures
- Twin Screw Ship Handling (Manned Models)
- Ship Handling Appreciation
- Proficiency in Fast Rescue Boats
- Tender Operations
- Bridge Team Management/Paperless
- Resource Management
- Leadership Coaching for Senior Officers
- Proficiency in Crisis Management and Human Behaviour\*
- Crowd Management on Passenger Ships\*
- Shipboard Safety Officer\*
- Proficiency in Security Awareness
- Proficiency in Designated Security Duties\*
- Proficiency as Ship Security Officer (SSO)\*
- Command and Control Fire Fighting
- Entry into Enclosed Spaces
- ISM Code Familiarisation
- Maritime Internal Auditor\*
- Maritime Auditor/Lead Auditor – Top-Up\*
- Maritime Auditor/Lead Auditor\*
- Helicopter Underwater Evacuation Training (HUET)
- Helicopter Underwater Escape Training with EBS

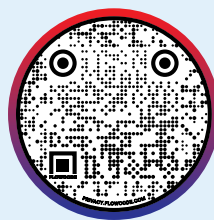
- Cyber Security for Maritime Professionals\*
- Proficiency in Cyber Security Hygiene\*
- Dynamic Positioning Induction (Basic)
- Dynamic Positioning Simulator (Advanced)
- Dynamic Positioning Revalidated

### Updating training (STCW 2010)

- Updated Proficiency in Personal Survival Techniques
- Updated Proficiency in Fire Fighting and Fire Prevention
- Updated Proficiency in Survival Craft and Rescue Boats
- Updated Proficiency in Advanced Fire Fighting
- Updated Proficiency in Fast Rescue Boats

\* denotes the delivery of this course is online.

For a complete up-to-date list of our auxiliary courses, visit; <https://maritime.solent.ac.uk/courses>





## WHO TO CONTACT/ BOOKING A COURSE

For further information about our engineering courses, please contact our admissions and recruitment team or visit our website.

T. +44 (0)23 8201 5004

E. [warsash.admissions@solent.ac.uk](mailto:warsash.admissions@solent.ac.uk)

To book a course, please first check availability online at [www.warsashsuperyachtacademy.com](http://www.warsashsuperyachtacademy.com)



# ENGINEERING QUALIFICATIONS

Gain the internationally recognised skills and qualifications necessary for a career as an engineering officer. We offer all of the courses needed to progress from assistant to chief engineer on modern superyachts and small commercial vessels.

Students at Warsash gain internationally recognised qualifications, including the MCA/STCW 2010 Basic Safety Training and MCA Approved Engine courses.

We have approval from the UK's Maritime and Coastguard Agency (MCA) to offer all of the course modules and programmes required to obtain an internationally recognised Certificate of Competency (CoC).

With a shortage of qualified personnel in marine engineering, there are excellent salary prospects and job opportunities for superyacht engineers.

## SUMMARY OF COURSES

### Entry Level

- STCW Basic Safety Training Week
- Approved Engine Courses (AEC 1 and AEC 2)

### Small Vessel Second Engineer – Less than 9,000kW, less than 3,000GT

- Second Engineer – Auxiliary Equipment Part 1
- Second Engineer – Marine Diesel Engineering
- Second Engineer – Operational Procedures, Basic Hotel Services and Ship Construction
- Human Element, Leadership and Management (HELM) –Operational Level
- High Voltage – Operational Level
- Proficiency in Medical First Aid
- Proficiency in Survival Craft and Rescue Boats
- Advanced Fire Fighting

### Small Vessel Chief Engineer – Less than 9,000kW, less than 500GT

- Chief Engineer – Statutory and Operational Requirements
- Chief Engineer – Auxiliary Equipment Part 2
- Human Element, Leadership and Management – Operational Level
- High Voltage – Operational Level

### Small Vessel Chief Engineer – Less than 9,000kW, less than 3,000GT

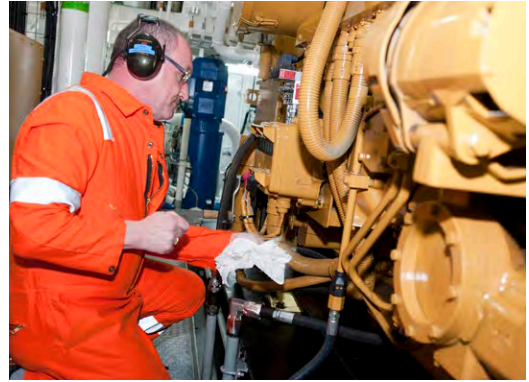
- Chief Engineer – Statutory and Operational Requirements
- Chief Engineer – Auxiliary Equipment Part 2
- Chief Engineer – Applied Marine Engineering
- Chief Engineer – General Science Engineering
- Chief Engineer – General Science Engineering II
- Human Element, Leadership and Management (HELM) –Management Level
- High Voltage – Management Level I
- High Voltage – Operational Level

### Engineer Officer of the Watch – Unlimited Certification

- Engineer Officer of the Watch – For Experienced Seafarers (IAMI Exam Route)
- Engineer Officer of the Watch – Specialised Route
- Engineer Cadet – Honours and Foundation Degree Routes
- Marine Electro-Technical Cadet – Honours and Foundation Degree Routes
- Engineer Cadet – Higher National Diploma Route
- Engineer Officer of the Watch – MNTB Workshop Skills Training
- Proficiency in Medical First Aid
- Proficiency in Survival Craft and Rescue Boats (other than Fast Rescue Boats)
- Advanced Fire Fighting
- Human Element, Leadership and Management – Operational Level
- High Voltage – Operational Level

### Second/Chief Engineer – Unlimited Certification

- Second/Chief Engineer – Engineering Science (Flexible) –For Experienced Seafarers
- Second/Chief Engineer – Engineering Knowledge (General and Motor)
- Second/Chief Engineer – Engineering Knowledge (General and Steam)
- Human Element, Leadership and Management – Management Level
- High Voltage – Management Level



# PATHWAY TO ENGINEERING QUALIFICATIONS

The MCA brought in the Engineer Officer Small Vessel Certificate of Competency (covered within MIN 524), in order to help simplify the number and levels of qualifications across the small vessel sector.

This certification covers new and experienced crew who wish to move into the small vessel environment as engineers. A Certificate of Competency (CoC) gained through this route will be transferable between the following industries:

- Superyachts
- Government patrol vessels
- Seismic survey
- Oceanographic research vessels
- Workboats
- Standby
- Fishing vessels
- Tugs

## STUDY REMOTELY

We have increased and enhanced the remote learning opportunities on offer.

All Small Vessel Engineering courses, other than the practical courses such as AEC1, AEC2 and Engineering Workshop Skills, are offered both on campus and online.

This form of hybrid tuition still requires commitment, however it satisfies both preferences of delivery, suiting all work schedules, travel and time restraints.

Our SV course dates and costs are on our website at; <https://maritime.solent.ac.uk/courses/engineering-and-electro-technical>

MCA guidance notes can be found in MIN 524 and additional M-notices on the MCA website at [www.gov.uk/ships-cargoes/m-notices](http://www.gov.uk/ships-cargoes/m-notices)



The route for certification is structured to provide a progressive career path for those in the industry to achieve small vessel engineer qualifications and will provide three certification levels:

**Second Engineer – less than 9,000 kW and less than 3,000GT**

- Second Engineer – Marine Diesel Engineering
- Second Engineer – Auxiliary Equipment Part 1
- Second Engineer – Operational Procedures, Basic Hotel Services and Ship Construction

**Chief Engineer – less than 3,000 kW and less than 500GT**

- Chief Engineer – Statutory and Operational Requirements
- Chief Engineer – Auxiliary Equipment Part 2

**Chief Engineer – less than 9,000 kW and less than 3,000GT**

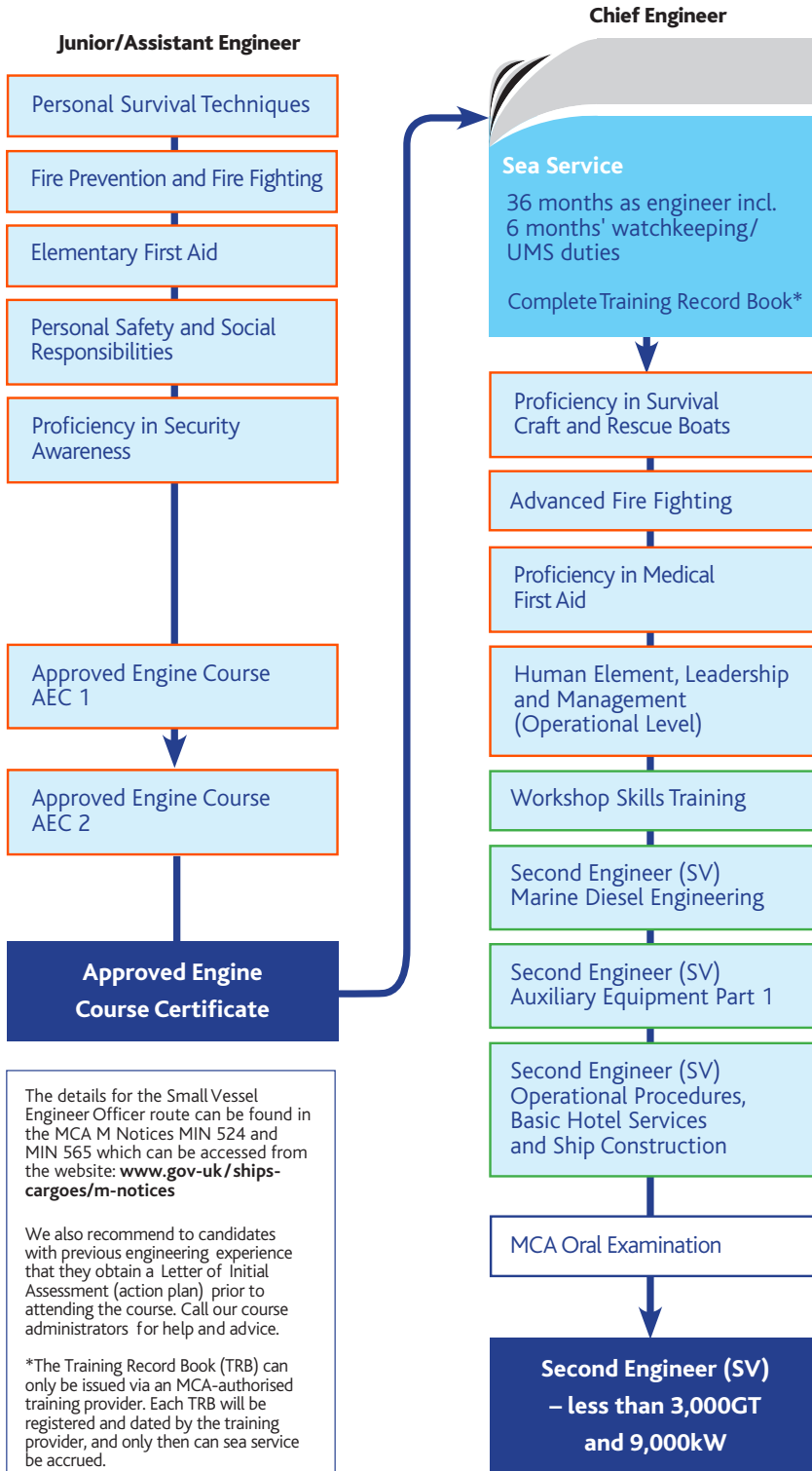
- Chief Engineer – Statutory and Operational Requirements
- Chief Engineer – Auxiliary Equipment Part 2
- Chief Engineer – Applied Marine Engineering
- Chief Engineer – General Science Engineering I
- Chief Engineer – General Science Engineering II

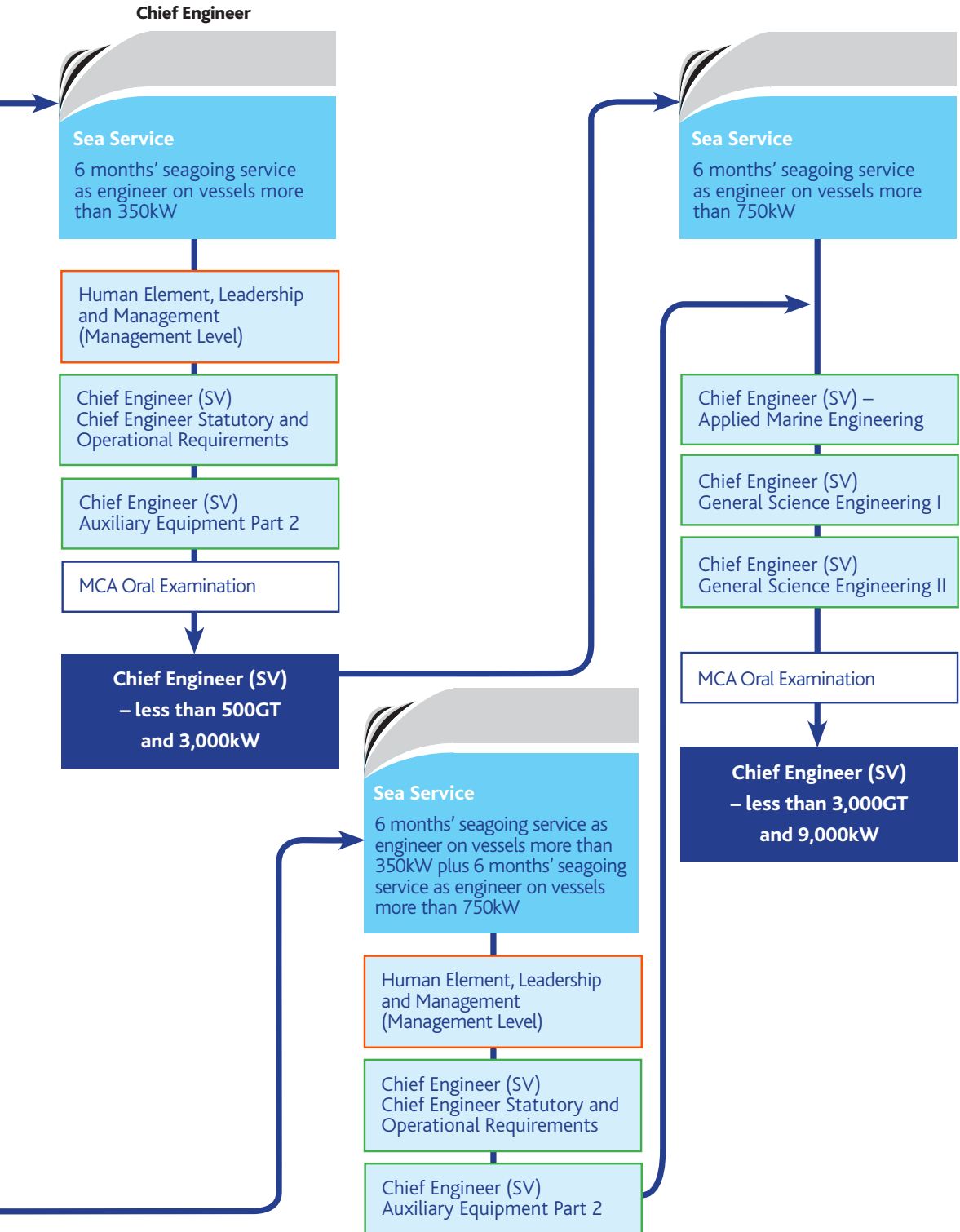
## ENGINEERS WITH EXISTING QUALIFICATIONS

Those with existing engineering qualifications such as graduate engineer, HND, HNC, NVQ and engineering apprenticeships may be liable for exemptions, and can apply directly to the academy for a qualification assessment and action plan.

Please read MIN 524 for guidance (pages 7 and 34), and contact us by emailing [wma.lia@solent.ac.uk](mailto:wma.lia@solent.ac.uk)

# SMALL VESSEL ENGINEER OFFICER ROUTE







## HOW TO BECOME A CHIEF ENGINEER

Approved yacht engineering qualifications known as Y4-Y2 were first introduced in 2001 to provide an industry-standard system of certification. From entry level to advanced, the route to certification is accessible and available to anyone seeking to pursue an engineering career, regardless of their previous training.

Standards remain high and the qualifying process is challenging, but demand for competent and knowledgeable superyacht engineers is great and the career rewards are considerable.

There are two clear pathways. For students aged 16 and above, there is the officer cadetship progressing to Engineer Officer of the Watch via an Honours Degree, Foundation Degree or HND pathway. The second route offers a steady progression via a series of approved courses, known as the Small Vessel (SV) Engineering certification, offering experienced seafarer and alternatives routes. For more information on the progression route, see page 32.

## ENTRY LEVEL

### ■ Approved Engine Courses (AEC I and AEC II)

**Training towards:** Yacht Engineer  
**Course duration:** 5 days

The MCA Approved Engine Courses (AEC I and II) provide the basic theoretical knowledge and practical hands-on experience of diesel engines to combine the roles of deck hand and junior engineer on yachts of more than 24 metres.

### ■ STCW Basic Safety Training Week

**Training towards:** Yacht Engineer  
**Course duration:** 5 days

The minimum requirements for familiarisation and basic safety training are contained within our Basic Safety Training Week (BSTW) and meet the appropriate standard of competence in Section A-VI/1 of the STCW Code. The five STCW courses run from Monday to Friday and include: Personal Safety and Social Responsibilities, Fire Prevention and Fire Fighting, Personal Survival Techniques, Elementary First Aid, and Proficiency in Security Awareness.

# SMALL VESSEL SECOND ENGINEER – LESS THAN 9,000KW, LESS THAN 3,000GT

## ■ Second Engineer (SV) – Workshop Skills Training

**Training towards:** Second Engineer less than 3,000GT  
**Course duration:** Request upon application

Workshop skills training is carried out in our engineering workshop at St Mary's campus. It gives students the opportunity to demonstrate basic engineering fitting skills, component assembly and electrical maintenance, with instructors on hand to give safety guidance and explain the tasks involved.

## ■ Second Engineer (SV) – Marine Diesel Engineering

**Training towards:** Second Engineer less than 3,000GT  
**Course duration:** 5 days including exam

The course is based on lecturer-led learning and revision. The course and exam covers: engine working principles, turbochargers, engine operation and maintenance, engine safety devices and governors, clutches and gearboxes, fuel supply systems, fuel characteristics and treatment, cooling water systems, engine starting systems, and engine construction.

## ■ Second Engineer (SV) – Auxiliary Equipment Part 1

**Training towards:** Second Engineer less than 3,000GT  
**Course duration:** 5 days including exam

This course covers: the working principles and maintenance of valves, pumps, compressed air systems, hydraulic control systems, propellers and thrusters, shafting and bearings, and electrical plant.

## ● FOR YOUR INFORMATION

The tuition of Small Vessel Engineering courses are offered online or on campus except for AEC1, AEC2 and workshops skills which are taught on campus in St Mary's campus, Southampton,.

We recommend that all students undertake at least six weeks of individual study before beginning your course. A full set of small vessel engineering study notes will be available online once you have registered.

The syllabi for all MCA/SQA yacht engineering examinations can be found in the MCA M Notice MSN 1859 which can be accessed from the MCA website: [www.gov.uk/ships-cargoes/m-notices](http://www.gov.uk/ships-cargoes/m-notices)

## ■ Second Engineer (SV) – Operational Procedures, Basic Hotel Services and Ship Construction

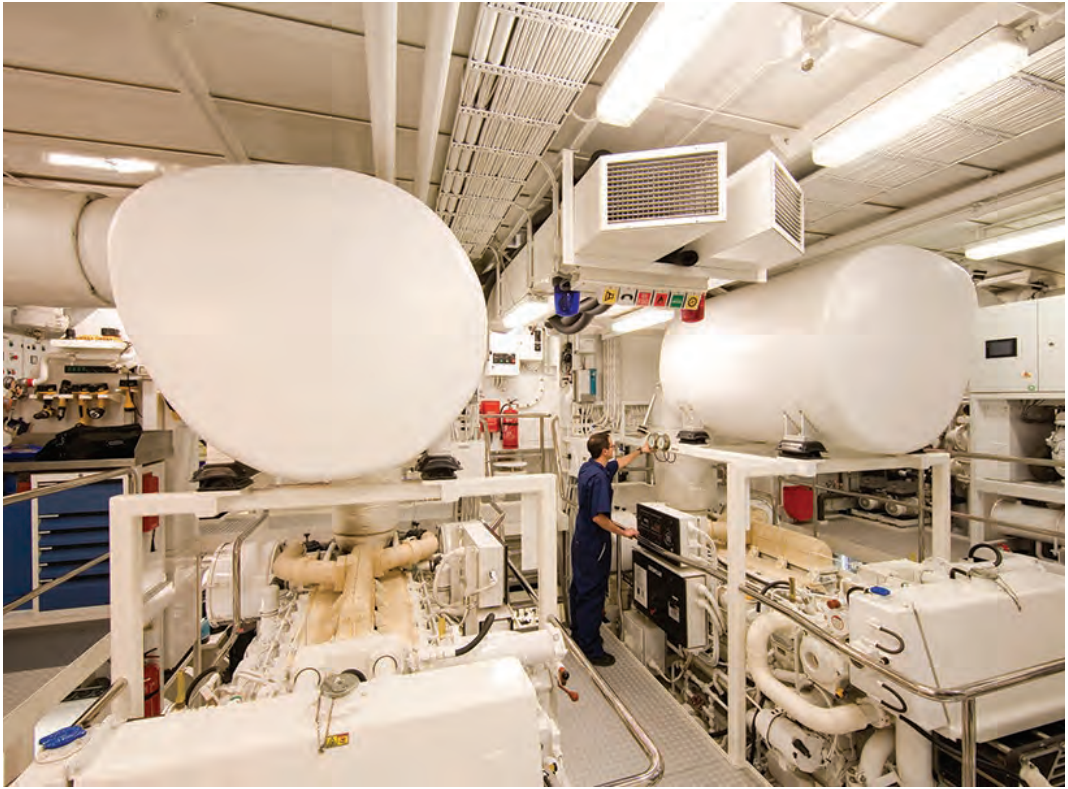
**Training towards:** Second Engineer less than 3,000GT  
**Course duration:** 5 days including exam

The course covers: legislation, watchkeeping, maintenance, pollution, bunkering, sewage plants, refrigeration and air conditioning, fresh water, motion control (stabilisation), fire fighting, and ship construction.

## \$4.8 BILLION

HISTORY SUPREME, THE WORLD'S MOST EXPENSIVE YACHT

**Source:** [LuxuryLaunches.com](http://LuxuryLaunches.com)



## SMALL VESSEL CHIEF ENGINEER – LESS THAN 3,000KW, LESS THAN 500GT

### ■ Chief Engineer (SV) – Statutory and Operational Requirements

**Training towards:** Chief Engineer less than 500GT  
**Course duration:** 5 days including exam

This course and examination covers: international conventions (SOLAS/ISM/ISPS/STCW/MARPOL), International Labour Organization, load line, MCA, classification societies, planned maintenance systems, voyage planning, emergencies, surveys and dry-docking. The course is based on lecturer-led learning and revision.

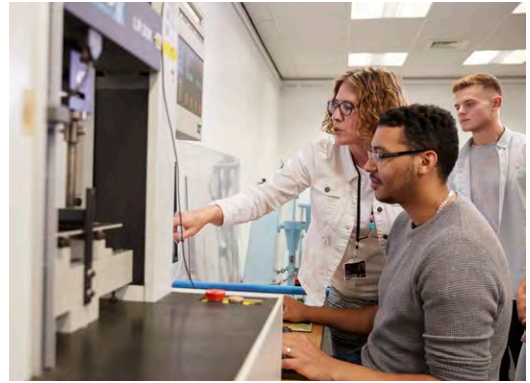
### ● STCW 2010 (MANILA AMENDMENTS)

From 1 January 2017 all engineers will have a negative endorsement ('not valid to serve on a vessel with electrical systems of 1kV and above') if they have not undertaken the one-day High Voltage – Operational Level course (see page 46). Note: It is highly unlikely that engineers with SV certificates will serve on a yacht with electrical systems above 1kV.

### ■ Chief Engineer (SV) – Auxiliary Equipment Part 2

**Training towards:** Chief Engineer less than 3,000GT  
**Course duration:** 5 days including exam

This course and examination covers: pumps and hydraulics, marine electrics, refrigeration and air-conditioning, higher pressure air systems, alternative fuels and ship construction.



## SMALL VESSEL CHIEF ENGINEER – LESS THAN 9,000KW, LESS THAN 3,000GT



### ■ Chief Engineer (SV) – Applied Marine Engineering

**Training towards:** Chief Engineer less than 3,000GT  
**Course duration:** 5 days including exam

This course covers: materials technology, heat treatment, knowledge of testing materials, knowledge of joining materials, corrosion, FRP (GRP), instrumentation and control engineering.

### ■ Chief Engineer (SV) – Auxiliary Equipment Part 2

**Training towards:** Chief Engineer less than 3,000GT  
**Course duration:** 5 days including exam

This course and examination covers: pumps and hydraulics, marine electrics, refrigeration and air-conditioning, higher pressure air systems, alternative fuels and ship construction.

### ■ Chief Engineer (SV) – General Science Engineering I

**Training towards:** Chief Engineer less than 3,000GT  
**Course duration:** 5 days including exam

This course covers: mathematics and applied mechanics. A full set of study notes is provided and 12 weeks' preparatory study must be undertaken prior to attending the course.

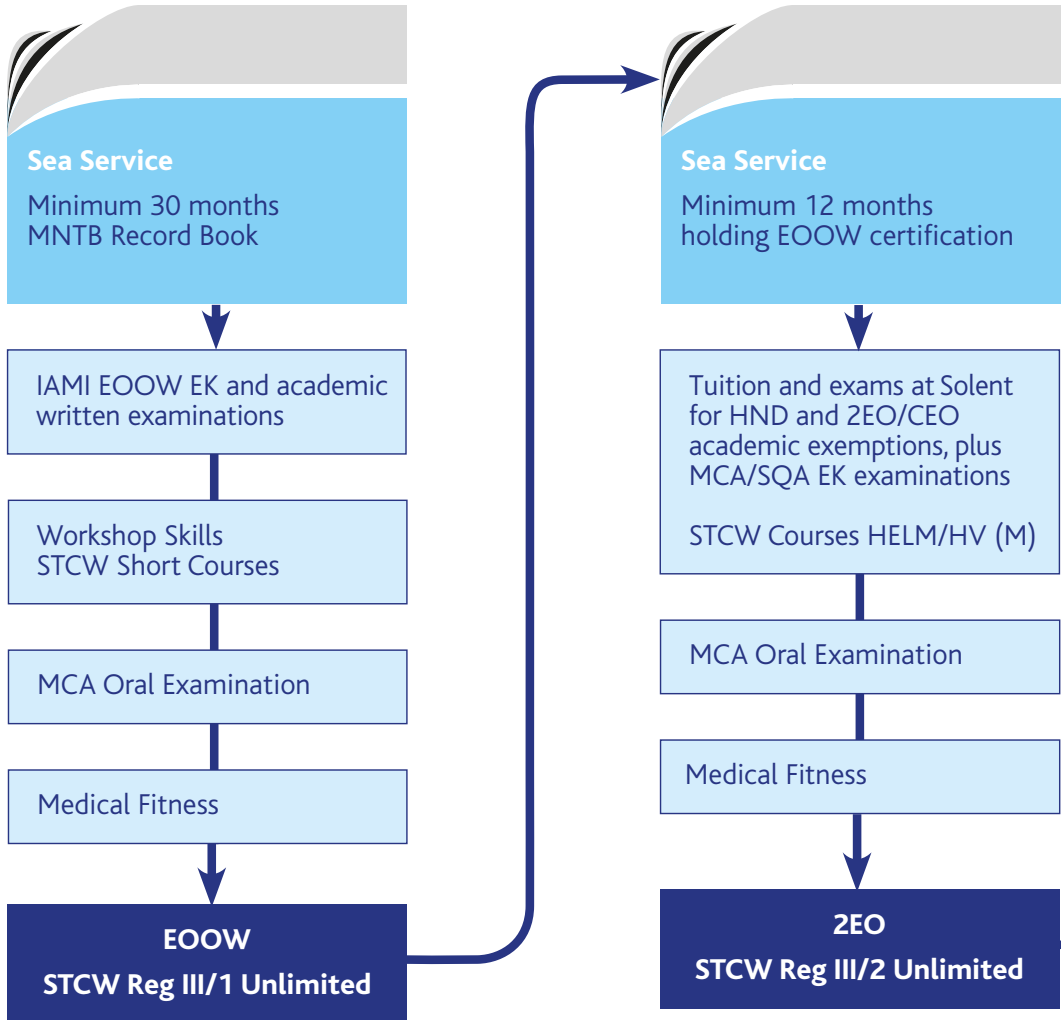
### ■ Chief Engineer (SV) – General Science Engineering II

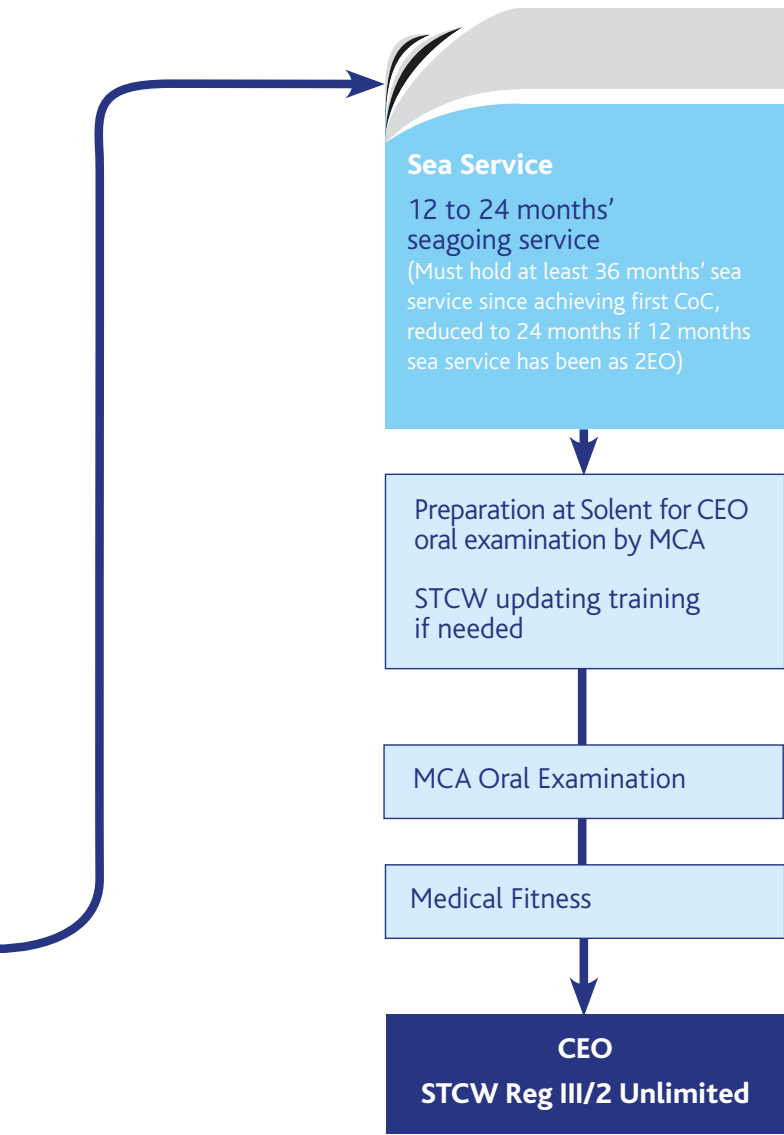
**Training towards:** Chief Engineer less than 3,000GT  
**Course duration:** 5 days including exam

This course covers: applied heat and electricity. A full set of study notes is provided and 12 weeks' preparatory study must be undertaken prior to attending the course.

**Please note** that we run General Science Engineering I and II courses concurrently, allowing you to sit the MCA/ SQA written exam for both parts on the ninth and tenth days. As such, students must book and attend both weeks to attain the course completion certificates required for the exams.

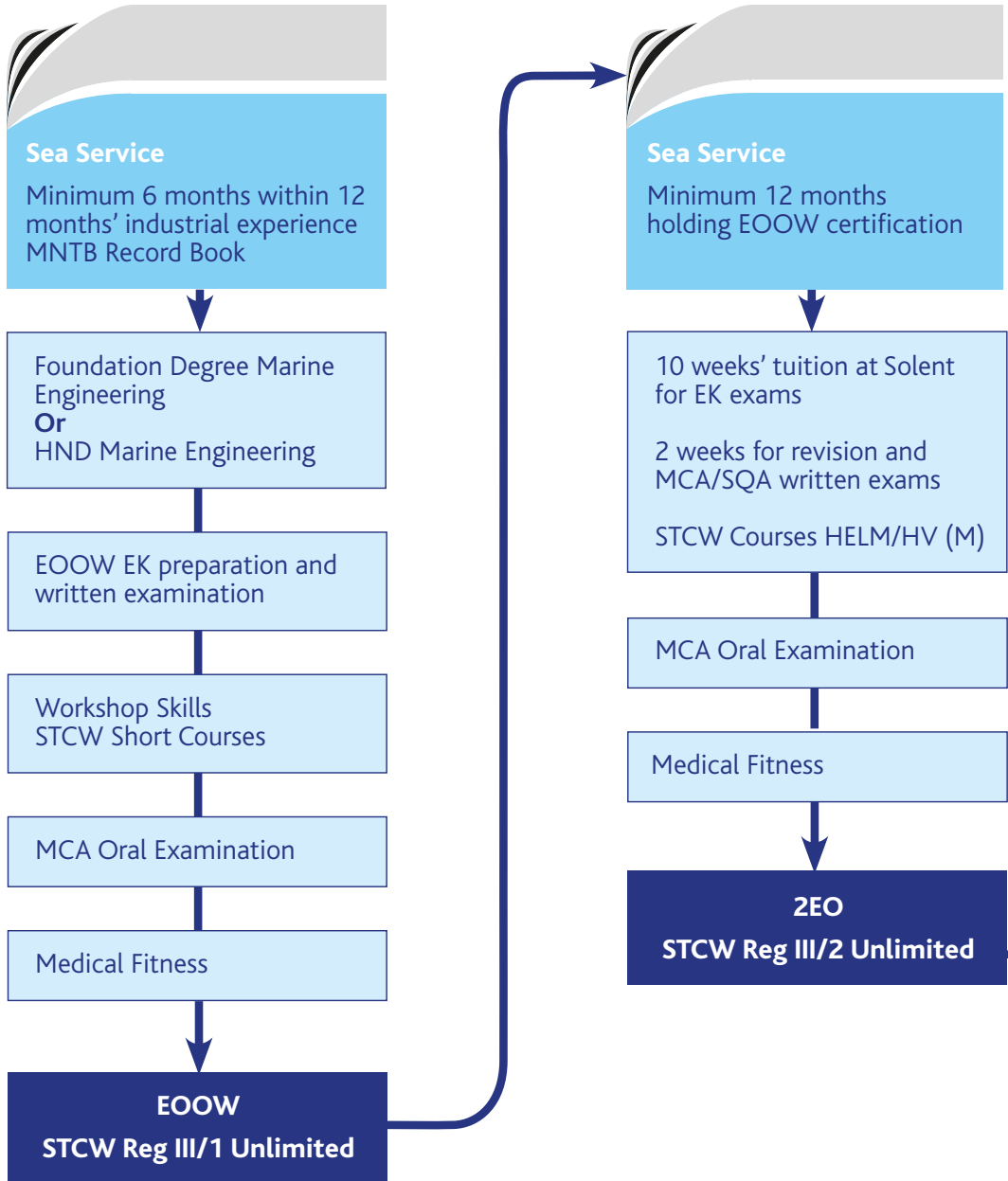
# ENGINEER OFFICER (UNLIMITED CERTIFICATION) – PROGRESSION CHART FOR EXPERIENCED SEAFARER ROUTE

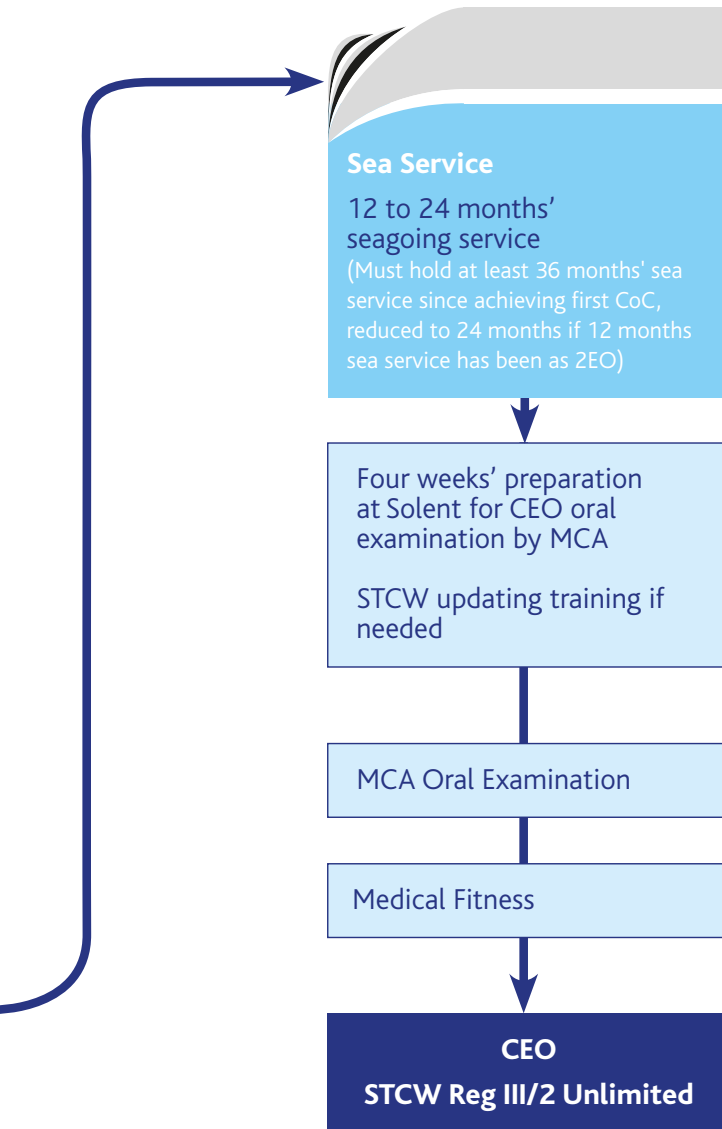




**Note:** Information related to certification requirements has been interpreted from MSN 1857 (M) Training and Certification Guidance. Certification structures can always change, so please check [www.warsashsuperyachtacademy.com](http://www.warsashsuperyachtacademy.com) for the latest version. © Warsash Superyacht Academy, 2021

# ENGINEER OFFICER (UNLIMITED CERTIFICATION) – PROGRESSION CHART FOR OFFICER CADET ROUTES





**Note:** Information related to certification requirements has been interpreted from MSN 1857 (M) Training and Certification Guidance. Certification structures can always change, so please check [www.warsashsuperyachtacademy.com](http://www.warsashsuperyachtacademy.com) for the latest version. © Warsash Superyacht Academy, 2021

# ENGINEER OFFICER OF THE WATCH – UNLIMITED CERTIFICATION

## ■ Engineer Officer of the Watch – For Experienced Seafarers (IAMI Examination Route)

**Training towards:** EOOW (Unlimited) STCW A-III/1  
**Course duration:** Dependent on certification requirements specified by MCA

This programme leads to STCW III/1 Engineer Officer of the Watch (EOOW) certification for experienced seafarers (for example, senior engine room ratings and other uncertificated personnel). In addition to any other training requirements specified by the MCA in their 'Letter of Initial Assessment' (for example, workshop skills training), students will prepare for and undertake the International Association of Maritime Institution's (IAMI) Engineering Knowledge (EK) examination, IAMI academic examinations and/or the MCA oral examination, as required.

## ■ Engineer Officer of the Watch – Specialised Route

**Training towards:** EOOW (Unlimited) STCW A-III/1  
**Course duration:** Dependent on certification requirements specified by MCA

This programme leads to STCW III/1 Engineer Officer of the Watch (EOOW) certification for candidates with specialised academic qualifications and/or experience recognised by the UK Maritime and Coastguard Agency (MCA). In addition to any other training requirements specified by the MCA in their 'Letter of Initial Assessment', you will undertake the IAMI Engineering Knowledge (EK) written examination and/or the MCA oral exam.

You will undertake the requisite MNTB Workshop Skills training (unless exempt by the MCA), which is taught and assessed to the satisfaction of the MCA in accordance with MNTB standards. It is necessary to also pass the initial five STCW basic safety courses before completing a minimum of six months' sea service (including four months' engine room watchkeeping duties).

## ■ Engineer Cadet – Honours Degree, Foundation Degree or Higher National Diploma Route

**Training towards:** EOOW (Unlimited) STCW A-III/1  
**Course duration:** 3 years

Under a full engineer officer cadet programme we offer three routes, leading ultimately to the award of an MCA Engineer Officer's CoC (STCW A-III/I OOW), and an academic award of either a BEng (Hons) Marine Engineering, a Foundation Degree (FdEng) in Marine Engineering or an HND Marine Engineering.

To find out more about sponsored cadetships, visit;  
<https://maritime.solent.ac.uk/careers/officer-cadet-training>

## ■ Marine Electro-Technical Cadet – Honours Degree, Foundation Degree and Higher National Diploma Route

**Training towards:** METO (Unlimited) STCW A-III/6  
**Course duration:** 3 years

Under a full marine electro-technical officer (ETO) cadet programme we offer three routes, leading ultimately to the award of an MCA Engineer Officer's CoC (STCW A-III/I OOW), and an academic award of either a BEng (Hons) Marine Electro-Technical Engineering, a Foundation Degree (FdEng) in Marine Electro-Technical Engineering, or an HND Marine Electro-Technical Engineering.

To find out more about sponsored cadetships, visit;  
<https://maritime.solent.ac.uk/careers/officer-cadet-training>

## ■ Engineer Officer of the Watch – MNTB Workshop Skills Training

**Training towards:** EOOW (Unlimited) STCW A-III/1  
**Course duration:** 15 weeks

Unless a candidate is exempted by the MCA due to previous industrial experience/qualifications, an MNTB Workshop Skills Training programme has to be undertaken and passed before initial certification as Engineer Officer of the Watch (EOOW) can be gained.

The programme covers all marine engineering workshop skills elements. It then advances to cover maintenance skills, assembly skills and electrical/electronic practice.

# HOW TO GET YOUR SECOND OR CHIEF ENGINEER UNLIMITED

There are two clear pathways to senior unlimited certification. Officer cadets currently complete the senior academic elements as part of their Honours or Foundation Degree or HND cadetship programmes. They then undertake Scottish Qualifications Authority (SQA) Engineering Knowledge (EK) examinations at the senior certification stages.

Experienced seafarers currently follow an SQA examination pathway after initial EOOW certification has been gained. Every student needs to pass appropriate engineering science written examinations at the senior certification stages (for example: Mathematics, Applied Mechanics, Applied Heat, Naval Architecture, Electro-technology and Engineering Drawing). They will then undertake SQA General Engineering Knowledge and Motor or Steam Engineering Knowledge examinations, as appropriate. All students must also pass the second engineer or chief engineer MCA oral examination, as appropriate.

## SECOND/CHIEF ENGINEER – UNLIMITED CERTIFICATION

### ■ Second/Chief Engineer – Engineering Science (Flexible) – For Experienced Seafarers

**Training towards:** Second/Chief (Unlimited) STCW A-III/2  
**Course duration:** As required

The academy has developed a series of flexible-learning engineering science courses at chief engineer level (covering associated second engineer requirements too).

SQA examination preparation courses in Mathematics, Applied Mechanics, Applied Heat, Naval Architecture, Electro-technology and Engineering Drawing will involve completion of a course of online study prior to attending the Academy, in order to undertake a short period of intense revision before sitting the respective SQA examination(s).

Opportunities to attend the Academy for the taught element of the course will be available throughout the year to co-ordinate with SQA EK examinations.

### ■ Second/Chief Engineer – Engineering Knowledge (General and Motor)

**Training towards:** Second or Chief Engineer (Unlimited) STCW A-III/2  
**Course duration:** 11 weeks (including examination week)

The academy offers a programme leading to STCW III/2 Second Engineer (2EO) certification by an Engineering Knowledge examination route, undertaking examinations (as required) conducted by the SQA on behalf of the MCA. Students also undertake an MCA oral examination separately.

### ■ Second/Chief Engineer – Engineering Knowledge (General and Steam)

**Training towards:** Second or Chief Engineer (Unlimited) STCW A-III/2  
**Course duration:** 11 weeks (including examination week)

The academy offers a programme leading to STCW III/2 Second Engineer (2EO) or Chief Engineer (CEO) certification by an Engineering Knowledge (EK) examination route, undertaking examinations (as required) conducted by the SQA on behalf of the MCA.

## ENGINEERING REVISION

### ■ Engineering Revision

An independent study option for our students wishing to utilise the School's learning resources as part of a personal revision programme to refresh and/or update their professional knowledge.

This study option includes full access to the Academy's learning resources, library, internet access, training software and past MCA question papers.

# HIGH VOLTAGE TRAINING

The STCW 2010 Manila Amendments contain mandatory high voltage (HV) training requirements for engineering and electro-technical officers on vessels with electrical systems of 1kV and above. Before 1 January 2017 all engineering and electro-technical officers must have undertaken the High Voltage Operational Level training, and chief engineers must have undertaken the High Voltage Management Level training (as required).

**Note:** No additional action is required for engineer officers who do not work on and do not intend to work on ships with high voltage systems. These engineer officers will receive the following CoC limitation: 'From the 1 January 2017 this certificate is not valid for service on ships fitted with High Voltage (over 1000V) systems. We offer a dedicated HV training facility at the Warsash Maritime School and the relevant MCA-approved courses as detailed below. For dates and availability, please visit the engineering course section on our website.



## High Voltage – Operational Level

**Training towards:** STCW10 requirement

**Course duration:** 1 day

As set out in STCW 2010 Table A-III/1, all engineering and electro-technical officers (yachts or unlimited) will have to undertake High Voltage Operational Level training before serving on a vessel with electrical switchboards of 1kV and above. The training gives crew the essential education and training in HV installations to meet the knowledge, understanding and proficiency requirements set out for electrical, electronic and control systems at the operations level.

This course is run at East Park Terrace main campus and will consist of a blend of classroom and practical training, including the use of the engine room simulator, to enable the student to understand the arrangement and protection of HV installations on board a vessel and the safety requirements necessary for HV installations.

## High Voltage – Management Level

**Training towards:** STCW10 requirement

**Course duration:** 4.5 days

As set out in STCW 2010 Table A-III and before January 2017, all engineering and electro-technical officers (yachts or unlimited) will have to undertake High Voltage Management Level training before gaining second (senior) certification and serving on a vessel with electrical switchboards of 1kV and above.

This training is suitable for marine engineering officers, electrical officers, engineer surveyors and marine superintendents. This course is run at East Park Terrace main campus and will consist of a blend of classroom and practical training, including the use of the engine room simulator, to enable the student to learn how to manage an HV system on board a ship, carry out HV fault diagnosis and maintain electrical supply. It will also ensure that the student understands the need for HV safety rules and regulations, the hazards associated with HV systems and the safety controls and documentation needed to enable the safe maintenance and operation of an HV system.



## AUXILIARY COURSES

STCW Basic Safety Training is mandatory for everyone working on large boats of more than 24 metres. Our portfolio of entry-level and advanced safety and security courses is fully compliant with STCW 2010 code (see pages 59–71). Candidates may also want to consider our core MCA and RYA modules in key areas such as tender operations, engine room resource management, safety management and ship security officer.

### Summary of auxiliary courses

- Proficiency in Medical Care
- Updated Proficiency in Medical Care
- Proficiency in Fast Rescue Boats
- Tender Operations
- Engine Room Resource Management
- Leadership Coaching for Senior Officers
- Proficiency in Crisis Management and Human Behaviour\*
- Crowd Management on Passenger Ships\*
- Shipboard Safety Officer\*
- Proficiency in Security Awareness
- Proficiency in Designated Security Duties\*
- Proficiency as Ship Security Officer (SSO)\*

- Command and Control Fire Fighting
- Entry into Enclosed Spaces
- ISM Code Familiarisation
- Maritime Internal Auditor\*
- Maritime Auditor/Lead Auditor – Top-Up\*
- Maritime Auditor/Lead Auditor\*
- Helicopter Underwater Evacuation Training (HUET)
- Helicopter Underwater Escape Training with EBS
- Cyber Security for Maritime Professionals\*
- Proficiency in Cyber Security Hygiene\*

### Updating training (STCW 2010)

- Updated Proficiency in Personal Survival Techniques
- Updated Proficiency in Fire Fighting and Fire Prevention
- Updated Proficiency in Survival Craft and Rescue Boats
- Updated Proficiency in Advanced Fire Fighting
- Updated Proficiency in Fast Rescue Boats

\* denotes the delivery of this course is online.

For a complete up-to-date list of our auxiliary courses, visit; <https://maritime.solent.ac.uk/courses>



## WHO TO CONTACT/ BOOKING A COURSE

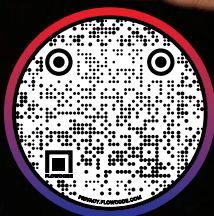
For further information about our interior and hospitality courses, please contact our interior training partner, Luxury Hospitality Academy, or visit our website.

T. +31 (0)646 081 660

E. [info@luxuryhospitalitymgm.com](mailto:info@luxuryhospitalitymgm.com)

To book a course, please check availability via

<https://luxuryhospitalitymgm.com>



# INTERIOR AND HOSPITALITY QUALIFICATIONS

Luxury Hospitality Academy (LH Academy) provides 7\* luxury hospitality training through Warsash Superyacht Academy for interior and hospitality crew on board luxury yachts and cruise ships. All courses are accredited through the Professional Yachting Association's (PYA) GUEST programme, the Guidelines for Unified Excellence in Service Training.

Luxury hospitality courses are known for their innovative and professional approach, taught by specialists in their field with a clear affinity to the superyacht industry. LH Academy is the first training provider to receive accreditation to train at all four levels: introduction, intermediate, advanced and management.

LH Academy, Warsash Superyacht Academy and PYA are setting the standard for interior training, providing the tools and recognised certification for career progression within the interior department.

## SUMMARY OF COURSES

### Introduction Level

- STCW Basic Safety Training Week

### Intermediate and Advanced Level

- Luxury Hospitality Beverage Specialist
- Luxury Hospitality Service Specialist
- Proficiency in Medical First Aid
- Advanced Fire Fighting
- Proficiency in Survival Craft and Rescue Boats
- Proficiency in Medical Care

### Management Level

- Luxury Hospitality Self-Managing Leadership
- Human Element, Leadership and Management (HELM) – Operational Level
- ISM Code Familiarisation

### Shoreside training

Our luxury hospitality interior training courses are held at our training facility near Amsterdam, the Netherlands. Every course is designed to be very interactive, with various field trips integrated throughout. The courses take place in March and October each year.

### On board training

LH Academy extends its training beyond the shoreside to provide customised courses on board yachts in the working team environment. These bespoke programmes are designed to fit the schedule of the vessel and bring inspirational, motivational and hands-on practical training that will allow yachts and their crew to operate professionally, with a greater emphasis on customer service and overall teamwork.

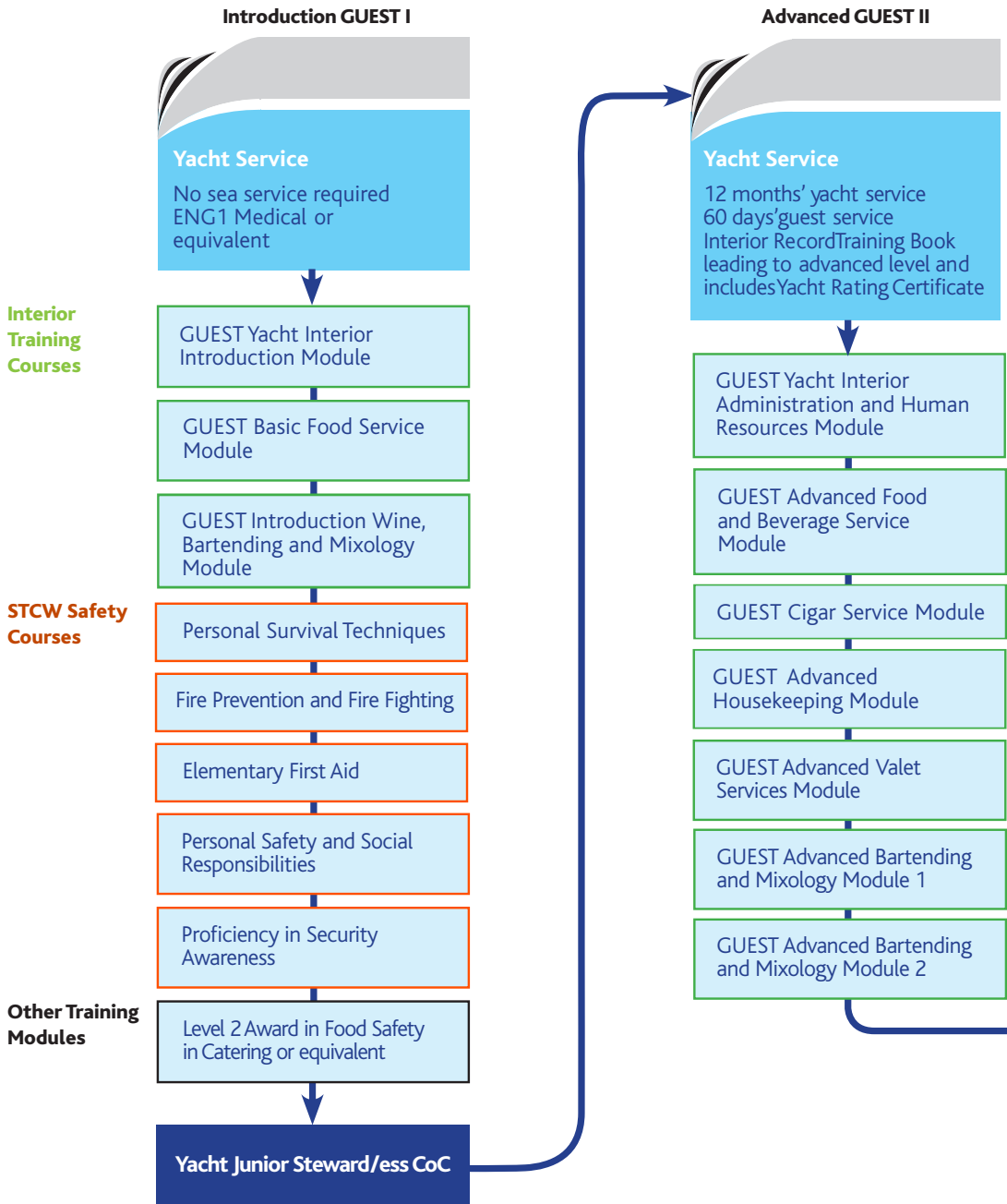
These courses are part of the luxury hospitality training in association with Warsash Superyacht Academy and accredited by the PYA.



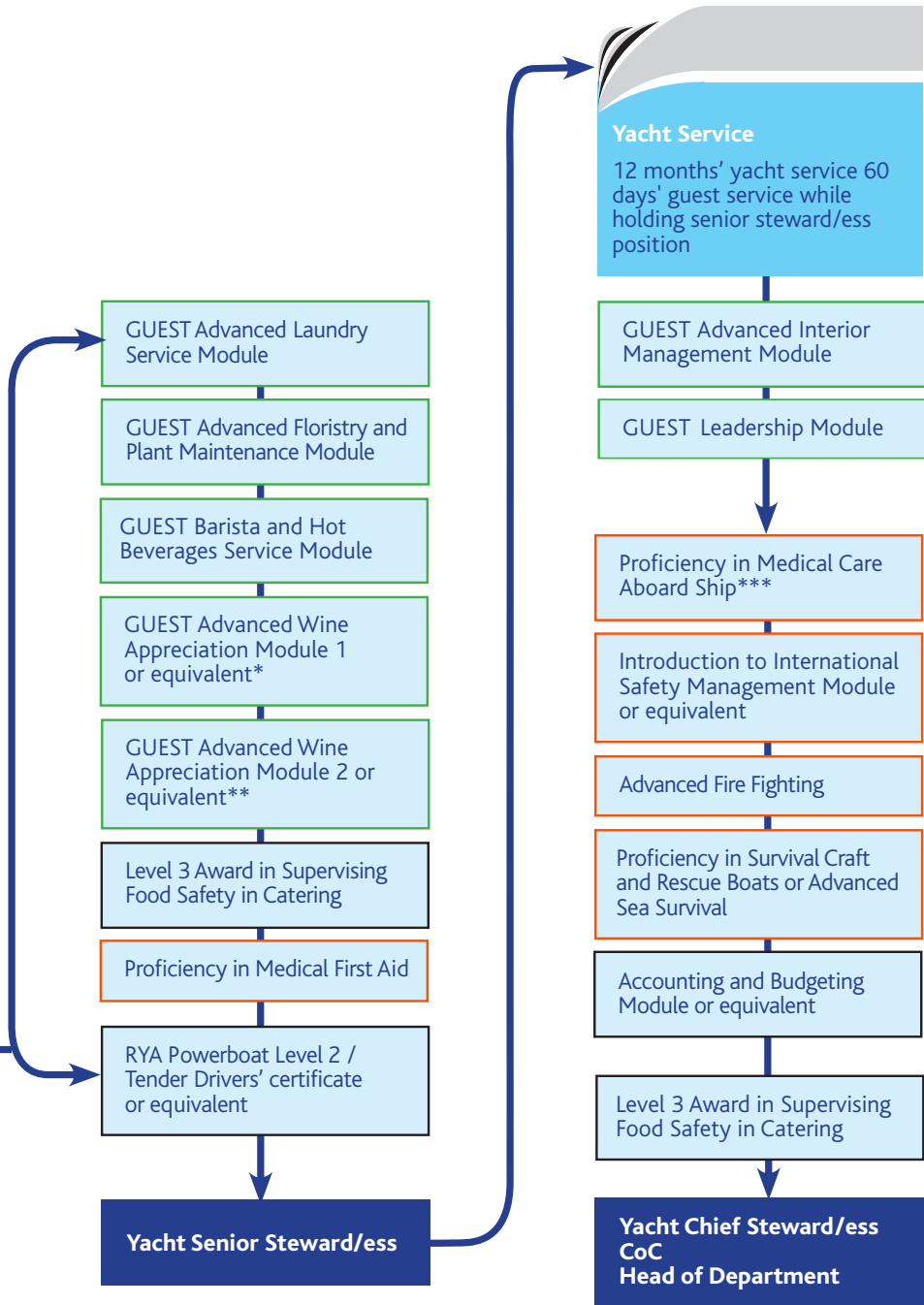
It was a fantastic way for the new team to understand the style of service and the level we are aiming for. ”

**Chief Stewardess,  
100-meter Lürssen yacht**

# INTERIOR AND HOSPITALITY (YACHTS) – PROGRESSION CHART



**Management GUEST III**



\* 1-day course; other recognised courses include: WSET Level 2, International Wine Guild Level 1, EIS Level 1. \*\*3-day course; other recognised courses include: WSET Level 2, International Wine Guild Level 2, EIS Level 2. \*\*\* The prerequisite for Proficiency in Medical Care is Proficiency in Medical First Aid. © Warsash Superyacht Academy, 2021



## SETTING NEW STANDARDS IN LUXURY HOSPITALITY TRAINING

Superyacht owners and their guests expect nothing less than a seven-star service, delivered by a first-class interior crew. To meet high customer expectations, LH Academy has created a series of PYA-approved training programmes which offer a clear pathway of progression for newcomers and experienced interior crew who are looking to advance their careers.

Whether students already have experience in the hospitality and customer service industries or are looking to move into their first position, our luxury hospitality training courses provide beginners through to management students with the necessary skills and competencies, adapted specifically for superyacht environments.

Our extensive suite of introduction, intermediate, advanced and management level courses are delivered by expert lecturers and trainers, in partnership with Interior Yacht Services.

They are complemented by the necessary STCW 2010 safety training courses which are mandatory for anyone who is working on large boats of more than 24 metres.

## PATHWAYS FOR ELITE INTERIOR CREW

There is a clear career path for interior crew, which allows students to progress from junior steward/ess to managerial positions, with the right qualifications and training. Interior crew roles vary depending on the size of the yacht, but they commonly require a broad base of skills and experience including:

- Housekeeping and interior maintenance
- Guest service including table setting and silver service
- Impeccable eye for detail
- Superb customer-service skills
- Precision management and forward planning
- Flexibility and practicality
- Discretion and trustworthiness
- Excellent understanding of protocol and etiquette
- Exceptional spoken and written English skills – multilingual preferred
- Computer skills (Word, Excel and PowerPoint).



## INTRODUCTION LEVEL

### ■ STCW Basic Safety Training Week

**Training towards:** Steward/ess

**Course duration:** 5 days

The minimum requirements for familiarisation and basic safety training for crew working on vessels of more than 24 metres are contained within our Basic Safety Training Week (BSTW) and meet the appropriate standard of competence in Section A-VI/1 of the STCW Code. The five STCW courses run from Monday to Friday and include: Personal Safety and Social Responsibilities, Fire Prevention and Fire Fighting, Personal Survival Techniques, Elementary First Aid, and Proficiency in Security Awareness.



After our training with you last year, the owner shared with us how much he saw an increase in the level of service provided. ”

**Chief Stewardess,  
55-metre Amels yacht**

# INTERMEDIATE AND ADVANCED LEVEL

## ■ Luxury Hospitality Beverage Specialist

**Training towards:** Senior and Chief Steward/ess

**Course duration:** 6 days

The Luxury Hospitality Beverage Specialist training is a very hands-on, practical training experience to engage the service mindset and increase confidence, finesse and expertise in different styles and techniques of producing the perfect drink for guests.

Bartending and Mixology modules:

- Role of the beverage specialist
- Bar tools and equipment
- Use of cocktail equipment
- History of the cocktail and the classics
- Reading and understanding recipes
- Pouring and shaking techniques
- Spirit knowledge
- Tasting
- A balanced drink
- Creativity with ingredients
- Creating a menu
- Speed training

Wine appreciation modules:

- Service and wine tasting
- Viniculture, vinification and climate
- Wines of France
- Wines of the World
- Food and wine pairing
- Labeling and pronunciation
- Wine list maintenance
- Wine storage
- Specific Yacht Service

This Luxury Hospitality training will provide the following:

- Luxury Hospitality Group certificate - Beverage Specialist
- GUEST certification; Advanced Wine Appreciation – Module 2
- GUEST certification; Advanced Bartending and Mixology – Module 2
- LHG certification; Latte Art and Specialist Teas



## ■ Luxury Hospitality Service Specialist

**Training towards:** Senior and Chief Steward/ess

**Course duration:** 5 days

The Luxury Hospitality Service Specialist course is a very hands-on, practical training experience to engage the service mindset and increase confidence, finesse and expertise in the different service style techniques. By building on relationships through teamwork and identifying personal responsibilities, participants learn how working together to streamline operations – both in the front and back of house – will improve the service flow and ultimately the guest experience.

Service training modules:

- Role of the hospitality specialist/interior yacht professional
- Service organisation
- Service styles including: American, French, Butler, Russian, Buffet, Silver and Synchronised
- Service sequence and the service plan
- Table settings and table seating
- Menu and food knowledge
- Table preparations; flambé, fileting, carving etc
- Wine and champagne service techniques
- Room and tray service
- Caviar service
- Cigar service
- Protocol and etiquette
- Communication: verbal and non-verbal
- Complaint handling

Completion of the Luxury Hospitality Service Specialist course will provide students with the following certification:

- Luxury Hospitality Group certificate - Service Specialist
- GUEST IAMI - Yacht Interior Advanced Housekeeping and Valet Services
- GUEST IAMI - Yacht Interior Advanced Laundry Services





## MANAGEMENT LEVEL

### ■ Luxury Hospitality Self-Managing Leadership

**Training towards:** Chief Steward/ess and Interior Manager  
**Course duration:** 5 days

This course provides key information for crew operating at (middle) management level in professional yachting. The syllabus includes: personal profiling and team building, administration, information and financial management, leadership development, and in-depth event and destination management. Furthermore, there is a strong emphasis on human resource skill development, which includes hiring and interviews, performance reviews, mentoring and coaching.

The training completes the learning path for a hospitality professional, ensuring that all elements have been discussed, handled and clarified.

The management training modules include:

- Information management
- Situational leadership styles
- Financial management
- Talent dynamics

- Destination management
- Event management
- Provisioning.

Completion of the Luxury Hospitality Self-Manging Leadership course will provide students with the following certification:

- Luxury Hospitality Self-Managing Leadership
- GUEST IAMI - Yacht Interior Management
- ILM Continued Professional Development



## AUXILIARY COURSES

STCW Basic Safety Training is mandatory for everyone working on large boats of more than 24 metres. Our portfolio of entry and advanced safety and security courses is fully compliant with STCW 2010 code (see pages 59–71). Students may also want to consider core MCA modules in key areas such as tender operations, crisis and crowd management.

### Summary of auxiliary courses

- Proficiency in Fast Rescue Boats
- Tender Operations
- Leadership Coaching for Senior Officers
- Proficiency in Crisis Management and Human Behaviour\*
- Crowd Management on Passenger Ships\*
- Cyber Security for Maritime Professionals\*
- Proficiency in Cyber Security Hygiene\*

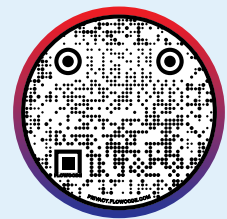
### Updating training (STCW 2010)

- Updated Proficiency in Personal Survival Techniques
- Updated Proficiency in Fire Fighting and Fire Prevention

- Updated Proficiency in Survival Craft and Rescue Boats
- Updated Proficiency in Advanced Fire Fighting
- Updated Proficiency in Fast Rescue Boats

\* denotes the delivery of this course is online.

For a complete up-to-date list of our auxiliary courses, visit; <https://maritime.solent.ac.uk/courses>



## MANAGEMENT – MORE THAN 500GT

Our ISM Code Familiarisation (page 70) and Human Element, Leadership and Management – Operational Level courses (page 62) will enhance the safety training portfolio of interior crew looking to progress their operational and managerial skills.



## WHO TO CONTACT/ BOOKING A COURSE

For further information about our STCW, safety and security training courses, please contact our admissions and recruitment team or visit our website.

T. +44 (0)23 8201 5004

E. [warsash.admissions@solent.ac.uk](mailto:warsash.admissions@solent.ac.uk)

To book a course, please first check availability online at  
[www.warsashsuperyachtacademy.com](http://www.warsashsuperyachtacademy.com)



# STCW, SAFETY AND SECURITY TRAINING QUALIFICATIONS

In 1995, the International Maritime Organization Convention adopted amendments to the International Standards of Training, Certification and Watchkeeping (STCW) which is now legally binding for signatory countries. The convention gives minimum legal standards for qualifications and training at sea; in short, captains, mates, watchkeepers, engineers and crew must all complete MCA/STCW training.

Important changes to the STCW Code, known as the STCW 2010 Manila Amendments, came into force in 2012. These changes affect the way in which, and how often, captains, officers and crew are trained and include some new training requirements. The measures include mandatory STCW 2010 training and certification in a number of areas including: basic safety training, leadership, security training and updating training for existing certificate holders.

STCW Basic Safety Training is mandatory for anyone working on board large yachts over 24 metres. Our portfolio of safety and security courses is fully compliant with the latest STCW Code.

## SUMMARY OF COURSES

### Entry Level

- STCW Basic Safety Training Week

### Fire Fighting

- Fire Prevention and Fire Fighting\*
- Updated Proficiency in Fire Prevention and Fire Fighting
- Proficiency in Advanced Fire Fighting
- Updated Proficiency in Advanced Fire Fighting
- Command and Control Fire Fighting
- Entry into Enclosed Spaces
- One-Day Fire Fighting

### Leadership and Management

- Human Element, Leadership and Management – Operational Level
- Human Element, Leadership and Management – Management Level
- Resource Management (covers Bridge and Engine Room Resource Management)
- Bridge Resource Management (including Simulation)
- Leadership Coaching for Senior Officers

### Maritime Safety

- Personal Survival Techniques\*
- Updated Proficiency in Personal Survival Techniques
- Personal Safety and Social Responsibilities\*
- Proficiency in Survival Craft and Rescue Boats (other than Fast Rescue Boats)
- Updated Proficiency in Survival Craft and Rescue Boats
- Proficiency in Fast Rescue Boats
- Updated Proficiency in Fast Rescue Boats
- Tender Operations
- Proficiency in Crisis Management and Human Behaviour
- Crowd Management on Passenger Ships
- Helicopter Underwater Evacuation Training (HUET)
- Helicopter Underwater Escape Training with EBS

### Medical and First Aid

- Proficiency in Elementary First Aid\*
- Proficiency in Medical First Aid
- Proficiency in Medical Care
- Updated Proficiency in Medical Care
- Automated External Defibrillation
- Oxygen Administration

### Navigation/Radio Communications

- Electronic Chart Display and Information Systems (ECDIS)
- GMDSS Restricted Operator's Certificate (ROC)
- GMDSS General Operator's Certificate (GOC)

### Safety Management

- ISM Code Familiarisation
- Designated Person Ashore (DPA)
- Maritime Internal Auditor
- Maritime Auditor/Lead Auditor – Top-Up
- Maritime Auditor/Lead Auditor
- Shipboard Safety Officer

### Security

- Proficiency in Security Awareness\*
- Proficiency in Designated Security Duties
- Proficiency as Ship's Security Officer (SSO)
- Company Security Officer (CSO) – Top Up
- Proficiency in Cyber Security Hygiene
- Proficiency in Cyber Security Awareness – Operational Level
- Proficiency in Cyber Security – Management Level

\* Indicates STCW Basic Safety Training programme elements

# ENTRY LEVEL

## ■ STCW Basic Safety Training Week

**Training towards:** Entry level for all crew  
**Course duration:** 5 days

The minimum requirements are contained within our Basic Safety Training Week (BSTW) and meet the appropriate standard in Section A-VI/1 of the STCW Code. The five courses run from Monday to Friday and include: Personal Safety and Social Responsibilities, Fire Prevention and Fire Fighting, Personal Survival Techniques, Elementary First Aid, and Proficiency in Security Awareness.

# FIRE FIGHTING

## ■ Fire Prevention and Fire Fighting

**Training towards:** STCW Basic Safety certificate  
**Course duration:** 2.5 days

This 18-hour course is part of the mandatory basic safety training for all seafarers with designated safety duties. It deals with the precautions needed to minimise the risk of fires, how fires are caused and how to extinguish them. It involves practical training, with a focus on fire fighting equipment and breathing apparatus. The course is part of the Basic Safety Training Week.

## ■ Proficiency in Advanced Fire Fighting

**Training towards:** STCW certification  
**Course duration:** 4 day

Under the new STCW 2010 requirements for training and certification, updated proficiency training will need to be undertaken in fire prevention and fire fighting every five years. This is a practical one-day fire course involving the use of breathing apparatus, hoses, nozzles and extinguishers.

## ■ Updated Proficiency in Fire Prevention and Fire Fighting

**Training towards:** STCW certification  
**Course duration:** 1 day

This 30-hour course is part of the training for officers who wish to qualify for a Certificate of Competency, and crew who are designated to control fire-fighting operations. It

involves practical exercises, fighting fires of different types and intensity, and 15 hours of classroom-based theory and group work.

## ■ Updated Proficiency in Advanced Fire Fighting

**Training towards:** STCW certification  
**Course duration:** 1 day

Under the new STCW 2010 requirements for training and certification, holders of an Advanced Fire Fighting certificate will require updated proficiency training in advanced fire fighting every five years. This classroom-based course involves reviews of theory elements of fire on board ships.

## ■ Command and Control Fire Fighting

**Training towards:** Command and Control Fire Fighting certificate  
**Course duration:** 3 days

This non-mandatory classroom-based course covers the strategy and tactics of fire fighting from the senior officer's viewpoint. It includes interactive table-top exercises for on-board fire scenarios and the latest information on shipboard fire fighting.

## ■ Entry into Enclosed Spaces

**Training towards:** Entry into Enclosed Spaces certificate  
**Course duration:** 1 day

Meeting the MNTB standard, course participants will have sufficient knowledge and understanding to recognise potential dangers on board a vessel, carry out safety atmosphere testing, and undertake space entry, self-rescue and an attendant role. The course is half practical and half classroom-based.

## ■ One-Day Fire Fighting

**Training towards:** One-Day Fire Fighting certificate  
**Course duration:** 1 day

This course provides fire theory and practical fire-fighting experience. On completion, candidates will have increased their knowledge of fire, and undertaken appropriate-level practical fire exercises.



# LEADERSHIP AND MANAGEMENT

## ■ Human Element, Leadership and Management – Operational Level

**Training towards:** STCW professional certification  
**Course duration:** 3 days - Campus or online delivery

This UK Maritime and Coastguard Agency (MCA)-approved course meets the mandatory requirements of STCW 2010 for training in the human element, leadership and management at the operational level. It provides students with an awareness and understanding of the key human factors influencing effective resource management.

You will acquire and develop tools and practical skills to enhance your maritime resource management capability. This training is a prerequisite for a first Certificate of Competency (CoC) issued by the MCA, meeting the requirements of Regulations II/1, III/1 and III/6.

## ■ Human Element, Leadership and Management – Management Level

**Training towards:** STCW Basic Safety certificate  
**Course duration:** 5 days

This MCA-approved course meets the mandatory requirements of STCW 2010 for training in the human element, leadership and management at the management level. The training is a prerequisite for a management-level CoC issued by the MCA upon meeting the requirements of Regulations II/2 and III/2.

The course is normally for technical officers following an approved education and training programme leading to MCA certification as:

- Chief mate or master on ships of 500GT or more
- Second engineer officer or chief engineer officer on ships powered by main propulsion machinery of 750 kW propulsion power or more.

It meets the obligatory requirements relevant to bridge resource management, engine-room resource management and the application of leadership and teamwork skills.

## ■ Resource Management (covers Bridge and Engine Room Resource Management)

**Training towards:** Professional development  
**Course duration:** 3 days

This classroom-based course will benefit all members of the deck and engineering departments and is suitable for personnel serving on all types of vessels, including large yachts. It is designed to meet the bridge and engine room resource management requirements as detailed in STCW 2010, which are identical for deck and engineering officers.

The course provides opportunities for students to consider their role in the working environment and offers a range of tools and techniques aimed at ensuring effective performance. The subject areas include: situational awareness, communication, culture, leadership and teamwork, and workload. It can be delivered to groups of either engineering officers, deck officers or both on the same course.

## ■ Bridge Resource Management (including Simulation)

**Training towards:** Professional development  
**Course duration:** 4- or 5-day options available

This course will benefit all members of the deck department and is suitable for personnel serving on all types of vessels, including large yachts. It is designed to meet the bridge resource management requirements as detailed in STCW 2010.

Extensive use is made of our bridge simulators to give students practical opportunities to practise and demonstrate the bridge resource management skills that are developed throughout the course. Typically 50 per cent of course time is spent in the simulator, and students are supported throughout and thoroughly debriefed as part of the learning experience.

The course provides opportunities for students to consider their role in the working environment and offers a range of tools and techniques aimed at ensuring effective performance.

## ■ Leadership Coaching for Senior Officers

**Training towards:** Professional development

**Course duration:** 5 days

This course is appropriate for the rank of Captain, Staff Captain, Chief Engineer and Staff Chief Engineer, and for those about to be promoted to these positions. It is designed to coach senior officers in aspects of leadership on board their vessels.

The main focus is on the management of self, other people and situations. There are opportunities for role-play, individual coaching sessions and reflective periods, as well as classroom teaching on theories and practical case studies.

You can leave the course with a good understanding of the principles of leadership as applied on board your vessel, together with your own individual development plan which may be monitored after the course. A maximum number of six students may attend, enabling each person to receive individual attention and feedback from an allocated coach.



## ■ Training for Instructors (excluding Teaching Assessment)

**Training towards:** Personal and professional development

**Course duration:** 5 days

The purpose of this MCA-approved course is to improve the performance of trainers delivering short training modules; for example, this would include ship members delivering safety briefs.

The training consists of lectures and workshops. The course covers: the theories of learning, teaching methods, planning lectures and exercises, presentation skills, culture, preparation of course materials, assessment and evaluation. A practical exercise plan will form part of one of the lectures and students will be expected to give presentations during the course.



## ■ Ship Salvage and Law Practice

**Training towards:** Professional development

**Course duration:** 5 days

The purpose of this course is to provide an in-depth knowledge of both the law, commercial practice and physical acts involved in ship salvage or wreck removal.

It is aimed at professionals from a wide range of marine disciplines, including but not limited to: ships' officers, shore-based staff, marine insurers, H&M, P&I and cargo insurers, port staff, coast guard personnel, and anyone wishing to join the salvage industry.

The programme consists of a mix of interactive lectures, simulated emergency workshops and instruction from industry professionals. The course is delivered in English and class size is limited to ensure a more personal experience.

# MARITIME SAFETY

## ■ Personal Survival Techniques (PST)

**Training towards:** STCW Proficiency in PST certificate  
**Course duration:** 1 day

This course forms part of the mandatory basic safety training for crew. It deals with the actions to be taken by individuals to protect themselves and others in emergency situations and includes practical training in the use of lifejackets and inflatable life rafts in a training pool. It is also available as part of the STCW Basic Safety Training Week.

## ■ Updated Proficiency in Personal Survival Techniques

**Training towards:** STCW Updated Proficiency in PST certificate  
**Course duration:** 0.5 day

Seafarers who hold an existing PST certificate are required to complete this updated training course to maintain proficiency under STCW 2010 Section A-VI/1 and Table A-VI/1-1. The training takes place both in the classroom and at our pool facility, where attendees are required to be fit enough to undertake the in-water practical drills similar to those undertaken on the original PST training course.

## ■ Personal Safety and Social Responsibilities (PSSR)

**Training towards:** STCW Personal Safety and Social Responsibilities certificate  
**Course duration:** 0.5 day

This classroom-based course forms part of the mandatory basic safety training for crew. It offers basic induction training in safety procedures and accident prevention on board. It familiarises new entrants with the employment conditions and working environment of superyachts. It is also available as part of the STCW Basic Safety Training Week.

## ■ Proficiency in Survival Craft and Rescue Boats (other than Fast Rescue Boats) (PSCRB)

**Training towards:** STCW Proficiency in SCRB certificate  
**Course duration:** 5 days

This course prepares crew for the launching and handling of survival craft. It includes a series of practical exercises using a range of open and enclosed lifeboats and inflatable rescue boats to build confidence, competence and knowledge of safety procedures.

## ■ Updated Proficiency in Survival Craft and Rescue Boats (other than Fast Rescue Boats)

**Training towards:** STCW Updated PSCRB certificate  
**Course duration:** 1 day

Seafarers holding an existing PSCRB qualification are required to complete this updated proficiency training course every five years to maintain proficiency under STCW 2010 Section A-VI/2.

This is a one-day course comprising theory and practical sessions, both in the classroom and at our pier head facility for which candidates are required to be fit enough to undertake practical drills in handling inflatable rescue boats, lifeboats and life rafts.

## ■ Proficiency in Fast Rescue Boats (PFRB)

**Training towards:** STCW PFRB certificate  
**Course duration:** 3 days

This course is designed for seafarers who hold a PSCRB certificate and have some experience of using fast rescue boats. The programme offers a combination of classroom theory and practical fast rescue boat operations on the Solent and at our pool facilities (capsize and righting drills).

## ■ Updated Proficiency in Fast Rescue Boats

**Training towards:** STCW Updated Proficiency in Fast Rescue Boats certificate  
**Course duration:** 1 day

Seafarers holding an existing PFRB qualification are required to complete this updated training course every five years to maintain proficiency under STCW 2010 Section A-VI/2 Paragraph 7.

This one-day course comprises theory and practical sessions in the classroom, at our pier head facility and in the pool. All attendees are required to be fit enough to undertake practical open water boat handling exercises and water capsize drills.

## ■ Tender Operations

**Training towards:** Professional development

**Course duration:** 3 days

This course is for crew responsible for passenger tender transfer operations and is offered as an on-board training package. The course timetable is flexible and can be modified to meet the constraints of training in an operational on-board environment. It includes practical exercises covering: launching, recovery, boat handling, collision avoidance, navigation, radio and emergency procedures.

## ■ Crisis Management and Human Behaviour on Passenger Ships

**Training towards:** STCW certification

**Course duration:** 1 day – campus or online delivery

This course is suitable for any person having responsibility for the safety of passengers in an emergency. It covers: emergency plans and procedures, the identification of stress, communication and control methods for situations involving passengers and crew.

## ■ Crowd Management on Passenger Ships

**Training towards:** STCW certification

**Course duration:** 0.5 day

This course is required for all crew with a duty to assist passengers on board ships. It is in compliance with STCW Code Section A-V/3 and provides underpinning knowledge for dealing with crowds in emergencies, rules of crowd management and factors affecting human behaviour in emergencies.

## ■ Helicopter Underwater Evacuation Training (HUET) – Breath Hold Only

**Training towards:** OPITO-approved HUET certificate

**Course duration:** 0.5 day

This course is designed to enhance the safety of marine personnel who are engaged in helicopter transfers at sea. It covers both normal and emergency safety procedures and includes dry evacuation training and practical underwater escape training using breath-hold techniques.

## ● STUDY I REMOTELY

We're offering increased and enhanced remote learning opportunities for some of our maritime safety, safety and security management courses designed and delivered with seafarers in mind.

These include;

- Crisis Management and Human Behaviour on Passenger Ships
- Crowd Management on Passenger Ships
- Designated Person Ashore
- Maritime Auditor/Lead Auditor
- Maritime Internal Auditor
- Shipboard Safety Officer
- Proficiency in Cyber Security Hygiene
- Proficiency in Designated Security Duties
- Company Security Officer (Top-Up)
- Proficiency as Ship Security Officer

For a complete up-to-date list of online-courses, visit: <https://maritime.solent.ac.uk/courses/course-availability/online-courses>

## ■ Helicopter Underwater Escape Training with EBS (HUET with EBS)

**Training towards:** OPITO-approved HUET with EBS certificate

**Course duration:** 1 day

This is an integral part of basic offshore emergency training for everyone working offshore in the UK sector and carries OPITO approval.

The course provides theory and practical training in the use of Emergency Breathing System (EBS) equipment (also referred to as 're-breather' equipment) and is combined with Helicopter Underwater Escape Training. The certificate is valid for four years, after which this course must be undertaken again to maintain the validity of the training.

# MEDICAL AND FIRST AID

## ■ Proficiency in Elementary First Aid (EFA)

**Training towards:** STCW Proficiency in Elementary First Aid certificate

**Course duration:** 1 day

This course is a combination of theory and practical training for basic first aid and life-saving skills. Upon successful completion, students receive a Proficiency in Elementary First Aid certificate. The course is also available as part of the Basic Safety Training Week.

## ■ Proficiency in Medical First Aid (MFA)

**Training towards:** STCW Proficiency in Medical First Aid certificate

**Course duration:** 4 days

This course is for crew designated to provide first aid on board ship and those needing Certificates of Competency. The training enables crew to take immediate action in the case of injury or illness. Upon successful completion of the course, candidates will receive a Proficiency in Medical First Aid certificate. All candidates attending this course will also receive automated external defibrillation training and a separate certification for this training.

## ■ Proficiency in Medical Care (PMC)

**Training towards:** STCW Proficiency in Medical Care certificate

**Course duration:** 5 days

This course is for seafarers designated to take charge of medical care on board ship and for those requiring Certificates of Competency. On completion of the course, the participant will have sufficient knowledge of medical stores and equipment to: diagnose medical problems on board; provide medical care to the sick and injured on board; and participate in co-ordinated schemes for medical assistance to ships.

Officers applying for Chief Mate or Master CoC for the first time must hold a PMC certificate not older than five years. **Note:** to attend this course you must hold the prerequisite qualifications.

## ● FIRST AID REFRESHER TRAINING

Currently under STCW 2010, there is no requirement for first aid training to be updated; however, many do choose to repeat first aid training periodically as a way to refresh skills.

The Proficiency in Elementary First Aid course allows you to remain competent at applying basic life-saving techniques and to understand what to do in an emergency situation. To remain competent at more advanced first aid skills, the Proficiency in Medical First Aid course may also be undertaken as a refresher.

## ■ Updated Proficiency in Medical Care

**Training towards:** Updated Proficiency in Medical Care certificate

**Course duration:** 3 days

On EU member state-flagged vessels, the master and any worker delegated to use medical supplies must receive special training at least every five years. On a UK-flagged vessel, the master and any other person delegated to take charge of medical care must hold a recognised Proficiency in Medical Care or Updated Proficiency in Medical Care certificate issued within the last five years.

This course ensures that the seafarer designated to take charge of medical care on board ship is able to maintain and update their skills and knowledge. Seafarers updating their training may also choose to do a full medical care course. Delegates on this course must hold the prerequisite qualifications.

**Note:** currently we are not offering this course, but please contact the admissions and recruitment team for further information.



### ■ Automated External Defibrillation (AED)

**Training towards:** Automated External Defibrillation certificate

**Course duration:** 0.5 day

This course provides basic life-support training in the use of automated external defibrillators which are commonly used in cases of cardiac arrest. AEDs are increasingly being made available for use by first aiders. It is suitable for anyone, even if no other first aid qualification is held. AED training is now included as standard within the Proficiency in Medical First Aid course, at no extra cost.

### ■ Oxygen Administration

**Training towards:** Oxygen Administration certificate

**Course duration:** 0.5 day

This half-day course provides a general introduction to the administration of medical oxygen. It is designed for the seafarer or shore-based staff who, in their role as first aider, may have to provide casualty care when oxygen is required. It includes resuscitation skills.

Oxygen Administration is also available as a combined course with AED.

## ● BESPOKE TRAINING

Training in first aid or medical care specific to your needs can be delivered either on board or on campus by our very experienced medical staff.

AED is also available as a combined course with Oxygen Administration. It is delivered on board over a six-hour period and the course includes a review of on-board equipment. The course is designed for the seafarer who may have to provide casualty care on board ship when oxygen is required, and includes resuscitation skills using AED. On completion, an AED and Oxygen Administration certificate will be awarded.

For further information on bespoke training, please contact the admissions and recruitment team.



## NAVIGATION

### ■ Electronic Chart Display and Information Systems (ECDIS)

**Training towards:** All deck officers

**Course duration:** 5 days

The aim of this course is to train bridge watchkeeping officers and other interested personnel in the safe and efficient use of ECDIS. It follows the recommendations of IMO Model Course 1.27 (the operational use of ECDIS) for generic ECDIS training and is also approved by Transas for type-specific training on the Navi Sailor 4000. It concentrates on the safe and efficient use of ECDIS at sea in a variety of conditions, from ocean passages to pilotages.

All new CoC applications must include ECDIS revalidation as before.

## ● ECDIS TRAINING – STCW 2010

The master and all deck officers of UK-flagged vessels which have ECDIS as their primary means of navigation are required to have completed both generic and equipment-specific ECDIS training, as per MCA guidance MIN 503.

All deck officers applying for a new UK CoC, or revalidating, must include an ECDIS certificate with their application. If an ECDIS certificate is not included with an application, the CoC will have the following limitation:

'From 1 January 2017, this certificate is not valid for service on ships fitted with ECDIS.' Please see MSN 1861: [www.gov.uk/ships-cargoes/m-notices](http://www.gov.uk/ships-cargoes/m-notices)

Other flag states have similar requirements, and you are advised to check with them directly if you are unsure.



## RADIO COMMUNICATIONS

### ■ GMDSS Restricted Operator's Certificate (ROC)

**Training towards:** Officer of the Watch

**Course duration:** 4 days

This professional GMDSS qualification is for anyone operating within an A1 area. It covers the practical operation of VHF, DSC, NAVTEX, EPIRBs and SARTs, along with battery and antenna maintenance. Radiotelephone operating procedures are covered for distress, urgency, safety and routine communications.

The ROC is also the minimum GMDSS qualification that the MCA will accept for Certificate of Competency revalidation.

### ■ GMDSS General Operator's Certificate (GOC)

**Training towards:** Officer of the Watch and Master 200GT

**Course duration:** 8 days

This certificate qualifies the holder to operate a suitably licensed marine radiotelephone, radio telex or satellite mobile earth station in any sea area. This is an intensive course which includes theoretical and practical training using simulator technology and real equipment in our GMDSS laboratory.

The course covers Safety of Life at Sea (SOLAS), general regulations and practical operation of DSC, NAVTEX, INMARSAT C, INMARSAT Fleet F77, EPIRBs and SARTs, along with battery and antenna maintenance.



## SAFETY MANAGEMENT

### ■ ISM Code Familiarisation

**Training towards:** Professional development

**Course duration:** 1 day

This course offers a sound background to the International Safety Management (ISM) Code and its specific requirements. It is designed for crew looking for a safety management solution in their own environment. It draws on the operational priorities of safety management and places them in a real-world yachting scenario.

### ■ Designated Person Ashore (DPA)

**Training towards:** Professional development

**Course duration:** 3 days – campus and online delivery

This MCA-recognised course is for newly promoted, deputy and current DPAs to meet the requirements for continued professional development (CPD). Other shore and sea staff requiring knowledge of the responsibilities, problems and potential liabilities involved with the DPA role will also benefit from this course.

### ■ Maritime Internal Auditor

**Training towards:** Professional development

**Course duration:** 2 days – campus and online delivery

This ISM course covers the purpose and benefits of internal audit plans, preparing for audits and producing audit reports. Effective techniques for preparing audits, corrective action and follow-up procedures are also covered.

### ■ Maritime Auditor/Lead Auditor – Top-Up

**Training towards:** Professional development

**Course duration:** 3 days

This ISM course is delivered at the Academy and has been modularised so that students can now complete the two-day Maritime Internal Auditor course and then return to 'top-up' to achieve ISM/ISO 9000 Lead Auditor certification. The 'top-up' course normally runs from Wednesday to Friday and is a very practical, workshop-based course.



### ■ Maritime Auditor/Lead Auditor

**Training towards:** Ship management professionals  
**Course duration:** 5 days – campus or online delivery

This course is aimed at practising and potential auditors of maritime management systems who address safety, pollution prevention and, where appropriate, service quality. The course is of practical benefit to safety professionals, ship owners and ship management professionals, amongst others.

### ■ Shipboard Safety Officer

**Training towards:** Professional certification  
**Course duration:** 3 days – campus or online delivery

This MCA-approved course is suitable for seafarers who are about to serve, or are already serving, as either safety representatives or safety officers. This training is intended to meet the requirements set out in the Merchant Shipping and Fishing Vessels (Health and Safety at Work) Regulations and the Code of Safe Working Practice for Merchant Seafarers (CoSWP). The course addresses both accident prevention and accident investigation.



The training has certainly made a difference and is clearly a way in which yacht charter companies should be investing in their crew. ”

**Graham Stephenson,**  
 Owner representative

## 140 METRES

LARGEST SUPERYACHT  
 DELIVERED IN 2020

**Source:** [yachtingpages.com](http://yachtingpages.com)

# SECURITY

## ■ Proficiency in Security Awareness

**Training towards:** STCW Proficiency in Security Awareness certificate

**Course duration:** 0.5 day

Under the STCW 2010 Manila Amendments this course must be undertaken by all seafarers employed or engaged in any capacity on yachts which are required to comply with the ISPS Code.

The stand-alone half-day course meets the requirements of Section A-VI/6 Paragraph 4 of the amended STCW Code. On completing this training, candidates will be able to contribute to the enhancement of maritime security through heightened awareness, recognise security threats and understand the need for, and methods of, maintaining security awareness and vigilance. The course is also delivered at no extra cost when booked as part of the STCW Basic Safety Training Week.

## ■ Proficiency in Designated Security Duties

**Training towards:** STCW certification

**Course duration:** 1 day – online delivery

Under the STCW 2010 Manila Amendments, this course must be undertaken by seafarers engaged on ships which are required to comply with the provisions of the ISPS Code, who have designated duties under the ship's security plan.

This training meets the requirements of Section A-VI Paragraphs 6–8 of the amended STCW Code. On completing this training, participants will be able to maintain the conditions set out in a ship security plan, recognise security risks and threats, undertake regular security inspections and properly use security equipment and systems.



## ■ Proficiency as Ship's Security Officer (SSO)

**Training towards:** Professional development

**Course duration:** 3 days – campus or online delivery

The threat of attack from pirates and terrorists is a very real one for superyachts passing through global waters that are designated as high-risk areas. This course is specifically designed for crew who may encounter a security or safety problem as they transit hostile environments and adverse conditions.

The course includes an introduction to the background of the ISPS Code, the roles of the company security officer (CSO) and ship security officer (SSO), security requirements and security administration. It covers: security drills, security exercises, crowd management techniques, security protection and emergency preparedness.

## ■ Company Security Officer (CSO) – Top-Up

**Training towards:** Professional development

**Course duration:** 2 days – campus or online delivery

This two-day course allows holders of a current MCA-approved Ship Security Officer certificate to achieve certification as a company security officer. The course is intended to meet the requirements set out in Sections A/2.1.7 and A/II of the ISPS Code and corresponding guidance in Part B of the code and relevant UK legislation. The course builds on security knowledge of shipboard operations and the interface between the ship, the operating company and the port facility.



As always the teaching at Warsash was second-to-none and all the lecturers were fantastic – erudite, exceptional, approachable and nice. ”

**General Ship Knowledge course student**



### ■ Proficiency in Cyber Security Hygiene (PCSH)

**Training towards:** Professional development  
**Course duration:** 2 hours

This course forms module one of a four module cyber security suite for all vessel and shore-based personnel who interact with IT and operational equipment. The course provides an introduction and overview of basic cyber security principles and best practice as defined by the MCA and Government Communications Headquarters (GCHQ).

### ■ Cyber Security for Maritime Professionals

**Training towards:** CISCO Introduction to Cyber Security certificate  
**Course duration:** 3 days

With cyber security attacks an increasing threat to technology used not just in shore-based organisations, but also on board modern ships. The IMO issued guidelines relating to cyber risk management in June 2017. Ship owners and managers must incorporate these guidelines into their safety management systems.

This three-day course, in partnership with Cyber Prism, offers the essentials of practical cyber security for shore and sea. The course is designed to enable seafarers and shore-based personnel to develop an awareness of cyber security threats, types of attack, and concepts and techniques used by attackers. The course is suitable for all ship-and shore-based personnel who interact with IT and operational equipment.

The course introduces you to the IMO's new cyber security guidelines, the EU's NIS Directive and the ISO 27000 standards for information security. You'll evaluate the methods of protecting data, maintaining privacy and system integrity. You'll also explore computer system design and networks in relation to information technology and operational technology.



## WHO TO CONTACT/ BOOKING A COURSE

For further information about our ship handling training courses, please contact our admissions and recruitment team or visit our website.

T. +44 (0)23 8201 5004

E. [ship.handling@solent.ac.uk](mailto:ship.handling@solent.ac.uk)

To book a course, please first check availability online at  
[www.warsashsuperyachtacademy.com](http://www.warsashsuperyachtacademy.com)



# SHIP HANDLING TRAINING CENTRE

Manoeuvring a new-build megayacht demands pilot precision, experience and first-class handling skills. Not all of that can be mastered in a computer-driven simulator, which is why driving scaled manned model ships provides a safe and controlled environment to practise and develop ship handling skills on a number of different vessels, in a wide variety of conditions using a range of facilities.

Our ship handling centre at Timsbury Lake near Romsey, is the only one of its kind in the UK, and one of very few in the world.

Its harbour areas, channels and 19 jetties can create multiple berths, offering a wide range of ship handling scenarios for masters and officer serving on board ships and large yachts.

It is a facility which yacht Captains and officers from all over the world attend during their career to gain skills and maintain licences, some returning to Warsash every five years to comply with company requirements.

The design and development of this innovative lake training facility has successfully integrated over 30 years of the Academy's scale model operating expertise. Combined with a comprehensive understanding of the maritime industry's needs, we are able to deliver world-leading facilities and programmes.

All courses are scheduled between March and November each year. Courses are on-demand and in small groups, please contact us with your requirements by emailing; [ship.handling@solent.ac.uk](mailto:ship.handling@solent.ac.uk)

For further information about the Ship Handling Centre, please visit: <https://www.solent.ac.uk/facilities/ship-handling-centre>

## LOCATION

All courses are run at our purpose-built Ship Handling Centre, which is located at Timsbury Lake, near Romsey in Hampshire, UK. The centre is approximately 10 miles from Southampton. For a map, please visit <https://maritime.solent.ac.uk/training-at-warsash>



The ship handling course is the best training I have had in my 29 years of going to sea. The models, instructors and facility are outstanding. ”

**Janet DeCastro**  
Master, ConocoPhillips

## SUMMARY OF COURSES

### Fire Fighting

- Ship Handling (Manned Models)
- Advanced Ship Handling (Manned Models)
- Formal Assessment of Ship Handling
- Ship Handling and Emergency Procedures
- Twin Screw Ship Handling (Manned Models)
- Ship Handling Appreciation

## TWELVE

DIFFERENT SHIP MODELS IN THE FLEET,  
A JACK-UP OIL RIG AND FIVE TUGS

**Ship Handling Centre, Timsbury Lake**



## SHIP HANDLING CENTRE

### A unique facility

The Ship Handling Centre offers the international maritime industry an invaluable training facility, using accurately scaled model ships to simulate the handling characteristics of actual vessels.

As the only facility of its kind in the UK and one of a very small number of major centres in the world, it provides specialised training and assessment for masters and senior officers in slow-speed ship handling, enabling mariners to practise and progress their ship handling skills through trial manoeuvres in a safe environment.

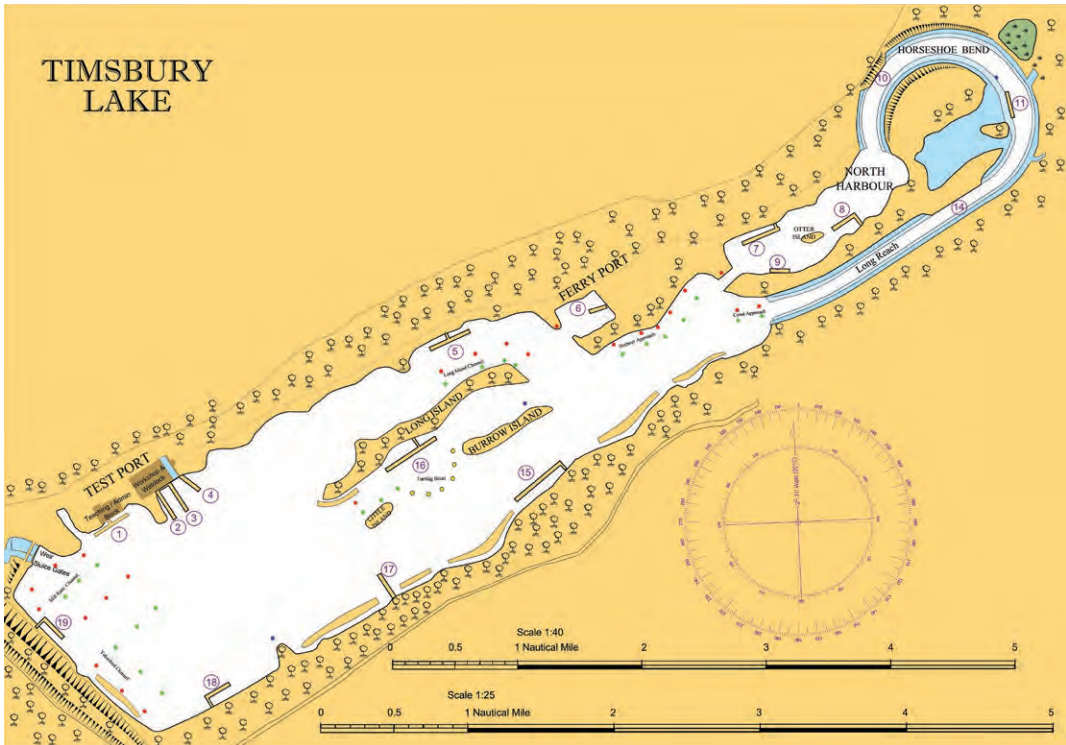
With our eight cutting-edge full-mission navigational bridges available for blended courses, the fleet of 12 different ship models (including a twin-screw yacht model, a jack-up oil rig and five tugs) allows an extensive range of ship handling scenarios to be carried out using a variety of models, berths, canals, channels and basins.

### Specialised ship handling training

The Ship Handling Centre attracts students from around the world because of the unique training it offers outside of purely simulated environments. Our collection of 30-foot long models are replicas of full-size ships, approximately 1:25 or 1:40 scale models.

The models have exactly the same controls as a real ship and the correct power to weight ratio as their full-sized counterparts. They are designed to stop in a scale distance of what the real ship will do, giving students a better training experience than a computer-based simulator can offer.

Unexpected wind shifts and gusts, close quarters situations, the effects of shallow water, bank effect and the demands of complex manoeuvring all combine to provide an unrivalled learning environment that directly replicates real-world situations.



### A wise investment

Even a small ship handling error resulting in damage to a superyacht can be extremely costly to repair. The significant impact of vessel incidents, whether economic, environmental, human or reputational, makes effective ship handling training a sound investment.

Practical elements of the courses take place on our specially designed lake with an extensive range of manoeuvring and berthing options, from curved and straight canal sections to narrow entrance and finger jetty, fixed and floating berths, buoyed channels and swinging basins.



[In preparation for Vava II's voyage] I sought some training using the manned model facility in Timsbury Lake. It has a 10-metre model of a twin screw, independent rudder and bow thruster vessel that I felt represented a large yacht exceptionally well. They went as far as mocking up a to-scale dock of the basin in Devonport on which to practise. ”

**Brendan O'Shannassy,**  
at the time Captain of Vava II

Source: Interview in *The Superyacht Report*,  
May 2012



## SHIP HANDLING

### ■ Ship Handling (Manned Models)

**Training towards:** Captain/Deck Officer  
**Course duration:** 4.5 days

Our standard ship handling course is recognised by the UK Maritime and Coastguard Agency (MCA) as meeting the principles laid down in Sections A-II/2 and B-V/a of the STCW Code regarding the training of officers on large ships.

The course is particularly suitable for captains and senior officers starting out on their careers or joining a new vessel. The training will develop their existing skills and enable them to understand the behaviour and handling of large vessels, with special emphasis on slow-speed control. Intensive practical exercises are supported by a programme of lectures and instruction, where special situations of an individual student's operations can be incorporated.

### ■ Advanced Ship Handling (Manned Models)

**Training towards:** Captain/Deck Officer  
**Course duration:** 4.5 days

This advanced ship handling course is suitable for more experienced captains and senior deck officers to further develop their knowledge and understanding of ship handling techniques, with particular reference to situations they encounter in their sphere of operations. The programme can be customised for the individuals attending, addressing more advanced issues such as the use of tugs.

### ■ Formal Assessment of Ship Handling

**Training towards:** Captain/Deck Officer  
**Course duration:** 0.5 day

The option of a half-day formal assessment of practical ship handling ability is available, undertaken by delegates following attendance on one of the main ship handling courses at the Ship Handling Centre.



### ■ Ship Handling and Emergency Procedures

**Training towards:** Captain/Deck Officer

**Course duration:** 3 days

This course meets the principles laid down in IMO Resolution A960 Section 5. It explores the principles and practices of ship handling, with an emphasis on emergency procedures and manoeuvres including steering, engine and bow thruster failures. Intensive practical exercises are supported by a programme of lectures to suit individual student needs; if required, this may include interaction and escort towage principles using radio-controlled tugs.

### ■ Twin Screw Ship Handling (Manned Models)

**Training towards:** Captain/Deck Officer

**Course duration:** 2.5 days

This course is aimed at captains and senior deck officers to develop their skills and understanding of the behaviour and handling of twin screw vessels. Intensive practical exercises are supported by a series of lectures at our Ship Handling Centre.

## ONE OF ONLY

A SMALL NUMBER OF MAJOR SHIP  
HANDLING CENTRES IN THE WORLD

**Ship Handling Centre, Timsbury Lake**

### ■ Ship Handling Appreciation

**Training towards:** Senior shore management

**Course duration:** 2 days

This course is aimed at personnel involved in marine operations, perhaps in the shipping, legal or insurance industries, who have little ship handling experience themselves. The aim is to give them an insight into some of the problems that may be encountered when handling ships, creating a better understanding of the tasks that their staff may be asked to perform.



## WHO TO CONTACT/ BOOKING A COURSE

For further information about our undergraduate and postgraduate programmes, please contact our admissions and recruitment team or visit our website.

T. +44 (0)23 8201 5066

E. [admissions@solent.ac.uk](mailto:admissions@solent.ac.uk)

To book a course, please first check availability online at  
[www.warsashsuperyachtacademy.com](http://www.warsashsuperyachtacademy.com)



# UNDERGRADUATE AND POSTGRADUATE PROGRAMMES

Solent University offers a first-class portfolio of maritime and engineering qualifications, ranging from HND to MSc. These qualifications deliver broad aspects of skills, training, education, research and practical understanding required to take on the responsibilities of today's global organisations.

We are world-renowned for training professionals who make a contribution at sea and ashore, and our expertise covers a comprehensive list of qualifications that range from specialist seafaring certification and maritime safety training to academic undergraduate and postgraduate degree programmes in the areas of ship operations, port management, engineering, yacht and powercraft design, maritime business, logistics and international maritime management.

You can benefit from our location at the centre of the UK and European shipping industries, close to the thriving port of Southampton and its successful business hub.

For more information on our undergraduate and postgraduate programmes, visit <https://www.solent.ac.uk/courses/maritime>

## SUMMARY OF MARITIME SCIENCE AND ENGINEERING COURSES

### Undergraduate programmes

- BEng (Hons) Electronic Engineering
- BEng (Hons) Mechanical Engineering
- BEng (Hons) Renewable Energy Engineering
- BEng (Hons) Yacht and Powercraft Design
- BEng (Hons) Yacht Design and Production
- BSc (Hons) Maritime Sciences (Top-Up)
- BSc (Hons) Maritime Business and Law (Top-Up)
- BSc (Hons) Shipping and Port Management
- BSc (Hons) Maritime Business
- BSc (Hons) Nautical Science
- BEng (Hons) Marine Engineering
- BEng (Hons) Marine Electro-technical Engineering
- FdEng Marine Electrical and Electronic Engineering (Officer cadetship)
- FdEng Marine Operations (Officer cadetship)
- FdEng Marine Engineering (Officer cadetship)

### Postgraduate programmes

- MSc Shipping Operations (Distance Learning)
- MSc International Maritime Business
- MSc International Shipping and Logistics
- MSc Superyacht Design
- PGDip International Trade and Maritime Law



I found the online method invaluable. I decided to study for the master's for a bit of recognition of what I had done to date. ”

**Ann Till,**  
MSc Shipping Operations graduate

# UNDERGRADUATE PROGRAMMES

---

## ENGINEERING

### ■ BEng (Hons) Electronic Engineering

**Training towards:** Honours degree

**Course duration:** 3 years

The University's professionally accredited electronic engineering programme can help you to turn your passion for electronics into a lucrative and engaging career.

The broad curriculum covers everything from analogue and digital electronics to contemporary embedded systems, signal processing technologies and modern communications.

Graduates can expect to seek employment in research and development, maintenance engineering, electronic design, telecommunications and much more.

### ■ BEng (Hons) Marine Electrical and Electronic Engineering

**Training towards:** Honours degree and ETO Officer of the Watch CoC

**Course duration:** 3 years

A new full honours degree officer cadetship programme that qualifies you to become a marine electro-technical officer cadet in the UK's merchant navy and gain a valuable academic honours degree upon completion, aiming to improve your prospects for roles later on in your career when you come ashore. The three-year sponsored training scheme includes practical electrical engineering knowledge, academic studies, safety training and the seagoing periods to gain practical shipboard experience.

### ■ BEng (Hons) Marine Engineering

**Training towards:** Honours degree and Engineer Officer of the Watch CoC

**Course duration:** 3 years

A new full honours degree officer cadetship programme that qualifies you to become a marine engineer officer cadet in the UK's merchant navy and gain a valuable academic honours degree upon completion, aiming to improve your prospects for roles later on in your career when you come ashore.

Training as an engineer officer cadet seafarer will offer you the chance to travel the world whilst gaining academic and practical engineering knowledge on a fully sponsored three-year marine engineer officer cadet programme. The training scheme splits into five phases which alternate between academic studies, practical experience, safety training and seagoing periods to gain practical shipboard experience.

### ■ BEng (Hons) Mechanical Engineering

**Training towards:** Honours degree

**Course duration:** 3 years

This programme focuses on applied engineering principles and places a strong emphasis on employability. Our experienced course team will help you to develop the range of theory-based, professional and hands-on skills that employers in the industry are looking for.

Our extensive network of industry contacts has provided past students with the opportunity to work on live briefs, helping them to develop analytical, problem-solving, teamwork and business and management skills.

The course aims to provide students with the knowledge employers will require, from essential engineering concepts to mechanics, drawing, CAD and manufacturing skills. Critically, past students have been able to gain an insight into real-life engineering problems, tackling projects defined for them by our network of industry contacts.

## ■ BEng (Hons) Renewable Energy Engineering

**Training towards:** Honours degree  
**Course duration:** 3 years

The energy sector is a fast-growing industry with enormous potential in the short and long term. From renewable energy generation to the efficient use of energy in engineering systems such as cars, the engineering industry will require engineers with expertise in the environmentally friendly generation, distribution and efficient use of energy. The University's renewable energy engineering course will equip you with key engineering skills and knowledge to start your career in this area.

This course will give you a strong grounding in science and engineering theory, with an emphasis on renewable power generation methods, environmental impact, and the efficient use of energy in engineering and technology.

## ■ BEng (Hons) Yacht and Powercraft Design

**Training towards:** Honours degree  
**Course duration:** 3 years

The BEng (Hons) Yacht and Powercraft Design at Solent University is a well-established engineering degree, providing graduates with the theoretical understanding and design skills of a professional naval architect working in the yacht and small craft industry. This might include the design of small racing sailing yachts through to a multi-millionaire's superyacht, patrol boats and commercial craft.

The naval architect/designer takes responsibility for the overall design, structure, speed, power, safety and stability of a craft. Emphasis is placed on practical examples and design applications, supported by computer-aided design (CAD) work. The three principal themes running through all three years are small craft technology, CAD and design practice, and engineering theory.

## ■ BEng (Hons) Yacht Design and Production

**Training towards:** Honours degree  
**Course duration:** 3 years

The BEng (Hons) Yacht Design and Production at Solent University is a modern course which builds on the University's internationally renowned yacht and powercraft design degree, its strong ties to the global industry and race-winning designers among its graduates.

Students will study the engineering science underlying great design, along with the fundamental principles of naval architecture, construction methods and materials. The course has a strong practical emphasis, focusing on hands-on examples, design applications and workshop experience in production methods and materials. You will also study planning and management processes for the efficient, effective production of racing sailing yachts, rigid inflatable boats, motor yachts, cruising yachts, patrol boats and commercial craft.

## ■ FdEng Marine Electrical and Electronic Engineering

**Training towards:** Foundation degree/ETO Officer of the Watch CoC  
**Course duration:** 3 years

Training as a marine electro-technical officer cadet in the UK's merchant navy will offer you the chance to gain valuable academic and practical electrical engineering knowledge and put your specialist skills into practice while away at sea. The three-year sponsored training scheme splits into five phases which alternate between academic studies, practical experience, safety training and seagoing periods to gain practical shipboard experience.

## ■ FdEng Marine Engineering

**Training towards:** Foundation degree/Engineer Officer of the Watch CoC  
**Course duration:** 3 years

Training as an engineer officer cadet in the UK's merchant navy will offer you the chance to travel the world while gaining valuable academic and practical engineering knowledge on a fully sponsored three-year marine engineer officer cadet programme. The training scheme splits into five phases which alternate between academic studies, practical experience, safety training and seagoing periods to gain practical shipboard experience.

# MARITIME BUSINESS AND OPERATIONS

cent of world trade and employs thousands of people worldwide in a huge number of roles, from ship and port management to finance, law, insurance, ship broking and ship agency services.

## ■ BSc (Hons) Maritime Sciences (Top-Up)

**Training towards:** Honour degree and Second CoC  
**Course duration:** 2 years (part time)

This highly specialist blended learning top-up degree, designed and taught by industry experts and tailored to the requirements of the maritime industry, gives professional seafarers the opportunity to top up their Professional Certificate of Competency as an Officer of Watch (STCW II/I) into a full academic honours degree. As well as providing a thorough understanding of the interrelationships and fundamental principles of the three main maritime functional areas – navigation, shipboard operations and ship management – the course also incorporates the underpinning knowledge for the Chief Mate Certificate of Competency (STCW (II/2)).

## ■ BSc (Hons) Maritime Business and Law (Top-Up)

**Training towards:** Honours degree and ETO Officer of the Watch CoC  
**Course duration:** 3 years

This specialist top-up degree delivers in-depth understanding of the legal framework which underpins maritime business, addressing complexities of safe delivery, ownership, insurance and more. On graduating you will have a thorough and current education in maritime business and law, with the knowledge to make an immediate contribution to industry organisations.

And you will have the ability to apply that knowledge to real-world challenges, thanks to exercises incorporating real problems derived from the industry, which explore the practical and practicable applications of theory and technical concepts.

## ■ BSc (Hons) Shipping and Port Management

**Training towards:** Honours degree  
**Course duration:** 3 or 4 years (with work placement)

Highly valued by employers and with a great reputation in the industry, this in-depth course is ideal if you're interested in a career in ship or port operations and management, or in logistics, freight forwarding, supply-chain management, port agency or terminal operations. Backed by a large international marine services sector, the international shipping industry carries around 90 per

## ■ BSc (Hons) Maritime Business

**Training towards:** Honours degree  
**Course duration:** 3 or 4 years (with work placement)

The maritime industry has global significance, employing thousands of people worldwide within a wide range of disciplines. This degree provides the specialist expertise in business, law and finance required to work in this prestigious, world-leading sector.

It will prepare you for a successful career in the international shipping industry, delivering a combination of the latest business skills, practical experience and specialist knowledge of the maritime industry. We are ideally placed to deliver the precise combination of business and maritime experience that industry employers are looking for. We have close links to the maritime industry, providing regular industry talks, visits to maritime business settings and professional input to ensure that the course reflects the industry's latest developments.

## ■ BSc (Hons) Nautical Sciences

**Training towards:** Honours degree and Deck Officer of the Watch CoC  
**Course duration:** 3 years

A new full honours degree officer cadetship programme that qualifies you to become a navigating (deck) officer and gain an academic honours degree. It will provide you with the opportunity to broaden your horizons and travel the world while you work. You'll combine the necessary skills and knowledge with work-based learning on board ship to leave you well prepared to begin your career as a qualified ship's officer in the merchant navy, and improve your prospects for roles later on in your career when you come ashore.

## ■ FdEng Marine Operations

**Training towards:** Foundation degree/Navigation Officer of the Watch CoC  
**Course duration:** 3 years

Training to become a navigating (deck) officer will provide you with the opportunity to broaden your horizons and travel the world while you work. You'll combine the necessary skills and knowledge with work-based learning on board ship to leave you well prepared to begin your career as a qualified ship's officer in the merchant navy.



## POSTGRADUATE PROGRAMMES



### ■ MSc International Maritime Business

**Training towards:** Master's degree

**Course duration:** 1 year full-time; 2 years part-time

Studied at Solent University, this master's course will equip you with advanced knowledge and skills for a successful career in the business of shipping operations and management.

It is a stimulating and intellectually challenging course with a strong business focus, exploring the complex factors involved in the management of ships and shipping operations worldwide. You'll reflect on the latest research in safety and risk management techniques and look at the impact of international legislation on management strategies in the industry.

In addition, you'll benefit from Southampton's position as a major centre in the UK and European shipping sector, with visits to the Port of Southampton and other relevant areas.

This course is validated by the Institute of Chartered Shipbrokers, and depending on your chosen pathway, will provide exemptions from some of the institute's professional examinations.

### ■ MSc International Shipping and Logistics

**Training towards:** Master's degree

**Course duration:** 1 year full-time; 2 years part-time

Gain a postgraduate qualification in shipping and logistics while developing your professional skills and knowledge in the dynamic world of maritime business.

Shipping managers in the current marketplace need to understand all aspects of international supply chain management. As the shipping industry evolves towards an integrated, multimodal, door-to-door logistics approach, such knowledge becomes increasingly important.

Studied at Solent University, this intellectually challenging course will equip you with the skills and knowledge you'll need to operate successfully within this dynamic industry.

You'll gain a detailed understanding of the operations and strategies of shipping as a single transport mode within the context of international multimodal logistics. In addition, you'll benefit from Southampton's position as a major centre in the UK and European shipping sector, with visits to the Port of Southampton and other relevant areas.



## ■ MSc Shipping Operations

**Training towards:** Master's degree

**Course duration:** 2 years part-time (distance learning)

Our online master's degree prepares self-motivated experienced marine professionals for future industry needs. We offer you a flexible, accessible and interactive study of higher level skills in the area of maritime safety management of shipping operations.

This course is offered fully online using Solent University's virtual learning environment, a web-based platform that is accessible 24 hours a day from anywhere in the world. Learn as part of an online community of tutors, fellow students, library and student support services, just as if attending the University itself.

The programme enables experienced marine industry professionals to succeed in management positions ashore, applying their learning to identify and solve complex, real-life issues and problems through work-related assignments and workplace projects. The course also develops general managerial capabilities including time management, influencing skills, report writing, presentations and career management.

Teaching on the course is founded on current issues, as well as case studies, and is drawn from the experience of the academic staff through their research and representation at the IMO and other important shipping organisations.

IMarEST accredits the course and students can register for chartered marine technologist status after successful completion of the programme.

## ■ MSc Superyacht Design

**Training towards:** Master's degree

**Course duration:** 1 year

Do you have a passion for naval architecture and dream of designing the next generation of superyachts? Solent University's unique superyacht design master's programme – the only one of its kind in the UK – blends naval architecture and structural design with management to help provide you with essential career-boosting skills.

The course concentrates on sailing and motor yachts over 24 metres in length, and is intended not just for naval architects and students of yacht design, but also now provides suitably qualified marine engineers and certified deck officers who have experience of operating superyachts with the opportunity to develop their qualifications, where traditionally the career path for yacht officers has not enabled them to progress to pure naval architecture degrees.

The blend of naval architecture (for which sea going officers will have underpinning knowledge), management and structural design will enable students from these backgrounds to develop their knowledge and understanding, and introduce new and relevant material and subjects for master's level study.

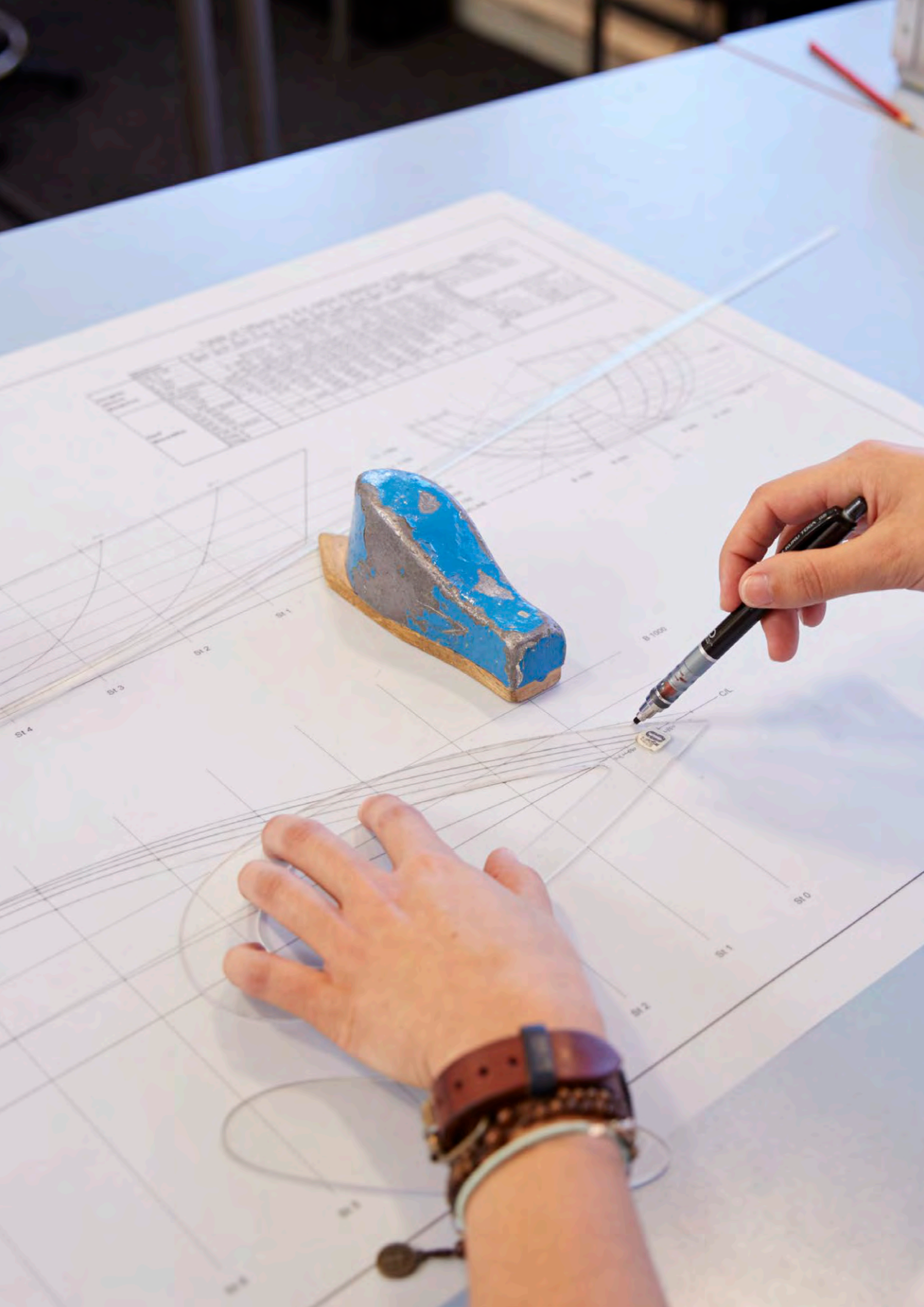
## ■ PGDIP International Trade and Maritime Law

**Training towards:** Post Graduate Diploma

**Course duration:** 1 year (distance learning)

Ideally suited to students working in the shipping industry who want to develop their understanding of how legal claims may arise within the context of international trade practice, this innovative law course delivers a first-class education in international trade, shipping and maritime law, focusing on the interrelationship between theory and commercial expertise.

The course delivers essential knowledge of the legal frameworks at the heart of shipping claims, disputes, and commercial relationships. Led by prominent industry speaker and maritime law academic Susan Hawker, and the course team of experienced academics and legal practitioners:



# INDEX OF COURSES

## DECK QUALIFICATIONS

<b>Summary of courses</b>	<b>13</b>
<b>Deck Officer (Yachts) – Progression Chart Entry Level</b>	<b>14</b>
Efficient Deck Hand (EDH)	16
STCW Basic Safety Training Week	16
Officer of the Watch (Yachts) – Less than 3,000GT	
Officer of the Watch (Yachts) – Navigation and Radar	17
Officer of the Watch (Yachts) – General Ship Knowledge	17
<b>Chief Mate (Yachts) – Less than 3,000GT</b>	<b>18</b>
Master (Yachts) – Less than 3,000GT	18
Master (Yachts) – Navigation Radar and ARPA Simulator	18
Master (Yachts) – Business and Law	18
Master (Yachts) – Seamanship and Meteorology	19
Master (Yachts) – Stability	19
Master (Yachts) – Celestial Navigation	19
<b>Deck Officer (Unlimited Certification) – Progression Chart for Experienced Seafarer Route</b>	<b>20</b>
<b>Deck Officer (Unlimited Certification) – Progression Chart for Officer Cadet Routes</b>	<b>22</b>
<b>How to obtain an OOW Unlimited when working in yachting</b>	<b>24</b>
<b>Officer of the Watch – Unlimited Certification</b>	
Officer of the Watch (HNC/Examination Route)	
– For experienced seafarers/yacht personnel	26
Deck Cadet – Foundation Degree Route	26
Deck Cadet – Honours Degree Route	26
Deck Cadet – Higher National Diploma Route	26
<b>Chief Mate – Unlimited Certification</b>	
Master and Chief Mate (HND/Examination Route)	
– For experienced seafarers	27
Chief Mate (Post FD Route) – For officers who followed the FD cadetship to initial certification	27
Chief Mate (Examination Route) – For officers who followed an HND cadetship to first certification	27
<b>Master – Unlimited Certification</b>	
Master's Orals	27
<b>Dynamic Positioning courses</b>	<b>28</b>

## Auxiliary courses

29

## ENGINEERING QUALIFICATIONS

<b>Summary of courses</b>	<b>31</b>
<b>New pathway to engineering qualifications</b>	<b>32</b>
<b>Small Vessel Engineer Officer – Progression Chart</b>	<b>34</b>
<b>Entry Level</b>	
Approved Engine Courses (AEC I and II)	36
Marine Engine Operator Licence (Yachts) – Orals Preparation	36
STCW Basic Safety Training Week	37
<b>Second Engineer (SV) – less than 9,000 kW and less than 3,000GT</b>	
Second Engineer (SV) – Workshop Skills Training	37
Second Engineer (SV) – Marine Diesel Engineering	37
Second Engineer (SV) – Auxiliary Equipment Part 1	37
Second Engineer (SV) – Operational Procedures, Basic Hotel Services and Ship Construction	37
<b>Chief Engineer (SV) – less than 3,000 kW and less than 500GT</b>	
Chief Engineer (SV) – Statutory and Operational Requirements	38
Chief Engineer (SV) – Auxiliary Equipment Part 2	38
<b>Chief Engineer (SV) – less than 9,000 kW and less than 3,000GT</b>	
Chief Engineer (SV) – Applied Marine Engineering	39
Chief Engineer (SV) – Auxiliary Equipment Part 2	39
Chief Engineer (SV) – General Science Engineering I	39
Chief Engineer (SV) – General Science Engineering II	39
<b>Engineer Officer (Unlimited Certification) – Progression Chart for Experienced Seafarer Route</b>	<b>40</b>
<b>Engineer Officer (Unlimited Certification) – Progression Chart for Officer Cadet Routes</b>	<b>42</b>
<b>Engineer Officer of the Watch – Unlimited Certification</b>	
Engineer Officer of the Watch – For Experienced Seafarers (IAMI Examination Route)	44
Engineer Officer of the Watch – Specialised Route	44
Engineer Cadet – Foundation Degree Route	44

Marine Electro-Technical Cadet – Foundation Degree Route	44
Engineer Cadet – Higher National Diploma Route	44
Engineer Officer of the Watch – MNTB Workshop Skills Training	44

### **Second/Chief Engineer – Unlimited Certification**

Second/Chief Engineer – Engineering Science (Flexible) – For Experienced Seafarers	45
Second/Chief Engineer – Engineering Knowledge (General and Motor)	45
Second/Chief Engineer – Engineering Knowledge (General and Steam)	45

### **Engineering Revision** 45

### **High Voltage training**

High Voltage – Operational Level	46
High Voltage – Management Level	46

### **Auxiliary courses** 47

## INTERIOR AND HOSPITALITY QUALIFICATIONS

### **Summary of courses** 49

### **Interior and Hospitality (Yachts) – Progression Chart** 50

#### **Introduction Level**

STCW Basic Safety Training Week	53
---------------------------------	----

#### **Intermediate and Advanced Level**

Luxury Hospitality Beverage Specialist	54
Luxury Hospitality Service Specialist	54

#### **Management Level**

Luxury Hospitality Leadership and Management	
--	--

### **Auxiliary courses** 57

## STCW, SAFETY AND SECURITY TRAINING

### **Summary of courses** 59

#### **Entry Level**

STCW Basic Safety Training Week	60
---------------------------------	----

#### **Fire Fighting**

Fire Prevention and Fire Fighting	60
Updated Proficiency in Fire Prevention and Fire Fighting	60
Proficiency in Advanced Fire Fighting	
Updated Proficiency in Advanced Fire Fighting	
Command and Control Fire Fighting	
Entry into Enclosed Spaces	
One-Day Fire Fighting	

#### **Leadership and Management**

Leadership and Management – Operational Level	62
Human Element, Leadership and Management – Management Level	62
Resource Management (Bridge and Engine Room)	62
Bridge Resource Management (including Simulation)	62
Leadership Coaching for Senior Officers	63
Training for Instructors (excluding Teaching Assessment)	63

#### **Maritime Safety**

Personal Survival Techniques (PST)	64
Updated Proficiency in Personal Survival Techniques	64
Personal Safety and Social Responsibilities (PSSR)	64
Proficiency in Survival Craft and Rescue Boats (other than Fast Rescue Boats) (PSCRB)	64
Updated Proficiency in Survival Craft and Rescue Boats (other than Fast Rescue Boats)	64
Proficiency in Fast Rescue Boats (PFRB)	64
Updated Proficiency in Fast Rescue Boats	64
Tender Operations	65
Proficiency in Crisis Management and Human Behaviour	65
Crowd Management on Passenger Ships	65
Helicopter Underwater Escape Training (HUET) – Breath Hold Only	65
Helicopter Underwater Escape Training with EBS (HUET with EBS)	65

#### **Medical and First Aid**

Proficiency in Elementary First Aid (EFA)	66
Proficiency in Medical First Aid (MFA)	66
Proficiency in Medical Care (PMC)	66
Updated Proficiency in Medical Care	66
Automated External Defibrillation (AED)	67
Oxygen Administration	67

**Navigation and Radio Communications**

Electronic Chart Display and Information Systems (ECDIS) 68  
 GMDSS Restricted Operator’s Certificate (ROC) 69  
 GMDSS General Operator’s Certificate (GOC) 69

**Safety Management**

ISM Code Familiarisation 70  
 Designated Person Ashore (DPA) 70  
 Maritime Internal Auditor 70  
 Maritime Auditor/Lead Auditor – Top-Up 70  
 Maritime Auditor/Lead Auditor 71  
 Shipboard Safety Officer 71

**Security**

Proficiency in Security Awareness 72  
 Proficiency in Designated Security Duties 72  
 Proficiency as Ship’s Security Officer (SSO) 72  
 Company Security Officer (CSO) – Top-Up 72  
 Proficiency in Cyber Security Hygiene (PCSH) 73  
 Cyber Security for Maritime Professionals 73

**SHIP HANDLING CENTRE**

---

**Summary of courses**

Ship Handling (Manned Models) 78  
 Advanced Ship Handling (Manned Models) 78  
 Formal Assessment of Ship Handling 78  
 Ship Handling and Emergency Procedures 79  
 Twin Screw Ship Handling (Manned Models) 79  
 Ship Handling Appreciation 79

**UNDERGRADUATE AND POSTGRADUATE PROGRAMMES**

---

**Summary of courses**

**81**

**Undergraduate programmes**

**Engineering**

BEng (Hons) Electronic Engineering 82  
 BEng (Hons) Marine Electro-Technical Engineering 82  
 BEng (Hons) Mechanical Engineering 82  
 BEng (Hons) Renewable Energy Engineering 83  
 BEng (Hons) Yacht and Powercraft Design 83  
 BEng (Hons) Yacht Design and Production 83  
 FdEng Marine Electrical and Electronic Engineering 83  
 FdEng Marine Engineering 83

**Maritime Business and Operations**

BSc (Hons) Maritime Sciences (Top-Up) 84  
 BSc (Hons) Maritime Business and Law (Top-Up) 84  
 BSc (Hons) Shipping and Port Management 84  
 BSc (Hons) Maritime Business 84  
 BSc (Hons) Nautical Sciences 84  
 FdEng Marine Operations 84

**Postgraduate programmes**

MSc International Maritime Business 85  
 MSc International Shipping and Logistics 85  
 MSc Shipping Operations (Distance Learning) 86  
 MSc Superyacht Design 86  
 PGDIP International Trade and Maritime Law 86

**Index of courses**

**88**

**How to find us**

**92**

**Contact us**

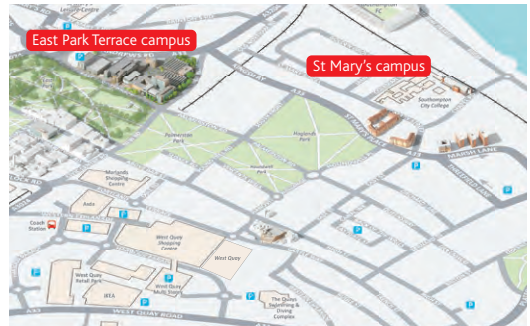
**93**



# HOW TO FIND US

As part of Solent University, Warsash Superyacht Academy is located in Southampton on the south coast of England, with excellent links and fast access by rail, air and road.

- Our teaching provision for yacht and small vessel certification, as well as our simulation centre, are located at East Park Terrace campus, postcode SO14 0YN.
- Engine workshop skills and AEC courses are located at St Mary's campus, Chapel Road, Southampton, postcode SO14 5GL.
- Fire fighting, maritime survival and safety proficiency, offshore and medical short courses are located at our Safety Training Centre in Warsash, postcode SO31 9ZL.
- Ship handling courses on manned ship models are located at Timsbury Lake, Romsey, postcode SO51 0PF.



## By Road

Southampton is just 75 miles (120km) from London, at the southern end of the M3 motorway. For Warsash village, take the M27 and exit at either junction 8 (west) or junction 9 (east), and follow the A27.

## By Air

The closest airports are Southampton International Airport (Airport Parkway station) and Bournemouth International Airport. However, London Heathrow and London Gatwick airports are both one and a half hours away by car or taxi (traffic dependent).

## By Rail

From London and the rest of the UK, travel to Southampton Central station, where there are taxi ranks.

The closest train station to Warsash is Swanwick. This station is on the line between Southampton Central (from the west and London) and Fareham (from the east).

Romsey is the closest train station to Timsbury Lake and is a 10-minute taxi journey to the Ship Handling Centre.

## By Coach

National Express runs coach services from many UK towns and cities to Southampton or Fareham.



# CONTACT US

---

## General enquiries

Main switchboard: +44 (0)23 8201 3000  
E. [wsa@solent.ac.uk](mailto:wsa@solent.ac.uk)

## All course and bookings enquiries

T. +44 (0)23 8201 5004  
E. [warsash.admissions@solent.ac.uk](mailto:warsash.admissions@solent.ac.uk)

## OOW (Unlimited) qualification

T. +44 (0)23 8201 5015  
E. [warsash.admissions@solent.ac.uk](mailto:warsash.admissions@solent.ac.uk)

## Interior and hospitality qualifications

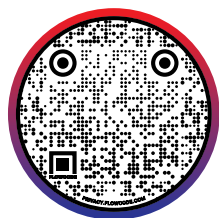
T. +31 (0)646 081 660  
E. [info@luxuryhospitalitymgm.com](mailto:info@luxuryhospitalitymgm.com)

## Commercial enquiries

E. [wsa@solent.ac.uk](mailto:wsa@solent.ac.uk)

## Officer cadet enquiries

(Unlimited certification)  
T. +44 (0)23 8201 5025  
E. [warsash.admissions@solent.ac.uk](mailto:warsash.admissions@solent.ac.uk)



## Also, visit our website for:

- Full course descriptions, availability and course dates.
- Contacts for key school staff.
- Information on careers and career progression.
- A list of facilities and travel information to the campus.
- News and events.

## Solent University

East Park Terrace  
Southampton SO14 0YN  
UK

## Ship Handling Centre

Timsbury Lake  
Jinny Lane  
Romsey SO51 0PF  
UK

## Safety Training Centre

Newtown Road  
Warsash  
Southampton SO31 9ZL  
UK

## Officer Cadet Education

Centre Chapel Road  
Southampton SO14 5GL  
UK



@warsashyacht



[warsashsuperyachtacademy](https://www.facebook.com/warsashsuperyachtacademy)



[linkedin.com/company/warsash-superyacht-academy](https://www.linkedin.com/company/warsash-superyacht-academy)



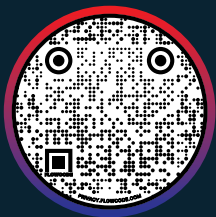
[youtube.com/warsashsuperyacht](https://www.youtube.com/warsashsuperyacht)



The information contained in this course brochure is also available at [www.warsashsuperyachtacademy.com](http://www.warsashsuperyachtacademy.com)

Every effort has been made to ensure that the information contained in this brochure is accurate and up to date. However, the content was prepared in July 2021 and there may be unforeseen circumstances which force change to some of the details printed.

© Solent University. No part of this publication may be copied or reproduced in any way without the permission of the publishers.



T. +44 (0)23 8201 3000

E. [wsa@solent.ac.uk](mailto:wsa@solent.ac.uk)

[www.warsashsuperyachtacademy.com](http://www.warsashsuperyachtacademy.com)