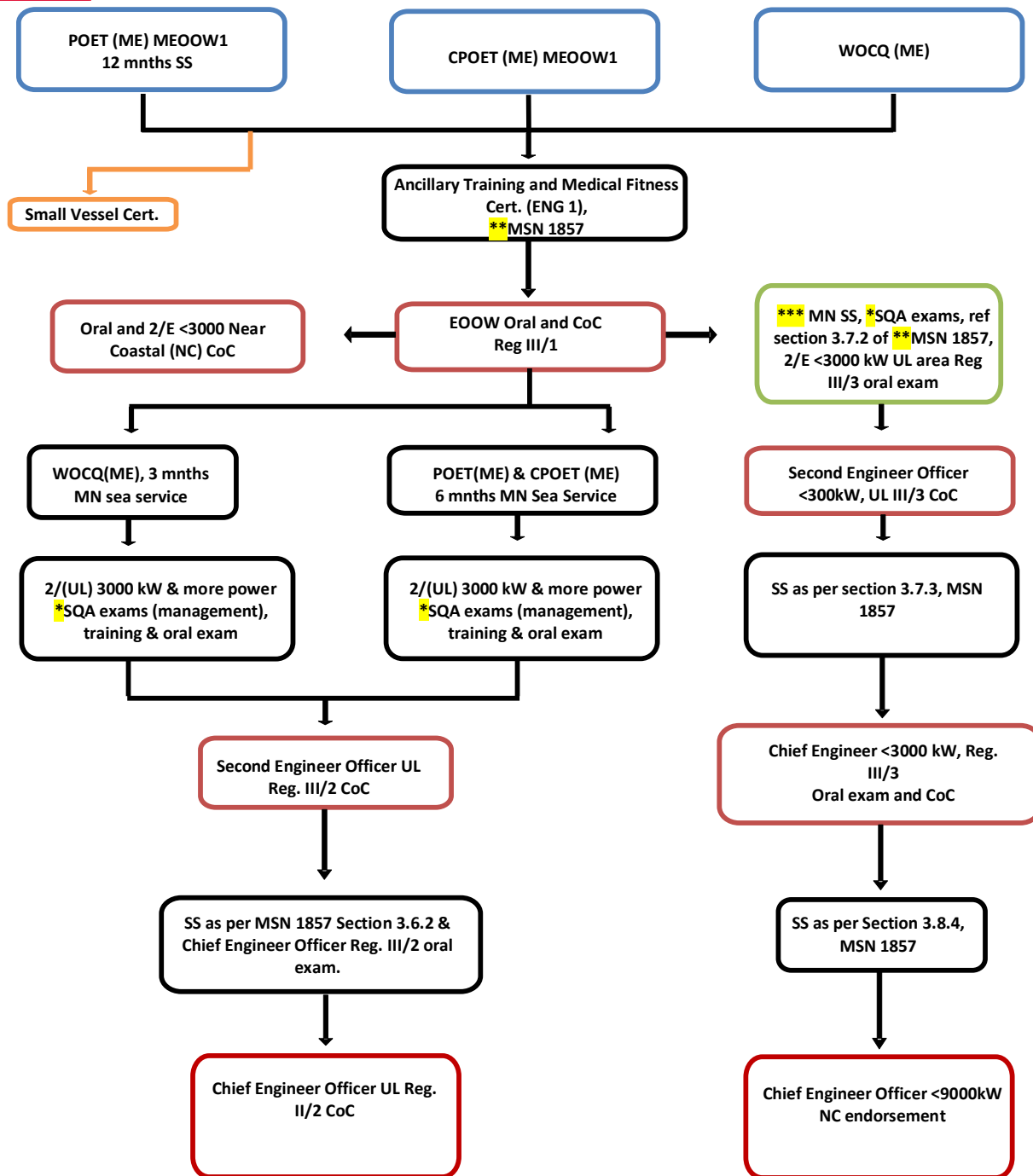




Group 2 – Petty Officer/Chief Petty Officer/Warrant Officer (ME)



* Exemption from academic subjects can be claimed on subject for subject basis. There is no exemption from the professional subject e.g. Engineering Knowledge (EK).

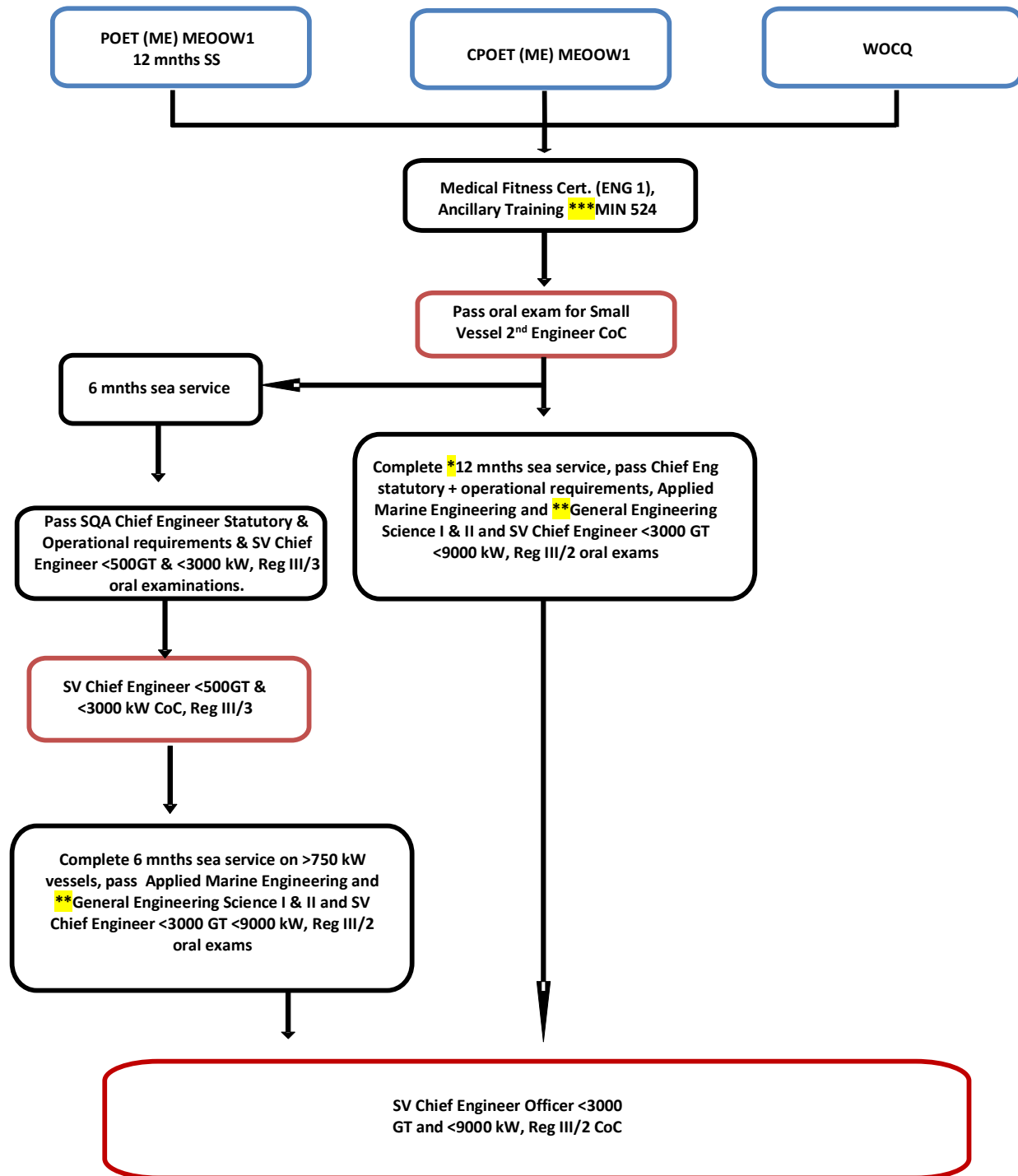
** Merchant Shipping Notices – MSNs are available on our website www.gov.uk/mca.

*** 3 months Merchant Navy sea service for WOCQ and for others section 3.7.2 (b) of MSN 1857 will apply.

Note - All applicants require 6 months sea service in the preceding five years when applying to MCA for Notice of Eligibility (NOE) to sit the oral examination. If not then applicants will be issued with Engine Room Watch Rating Certificate providing they hold basic STCW certificates and seafarer medical fitness certificate. They would then be able to complete 6 months service as rating on Merchant Navy vessels using this certificate.



Group 2 - Small Vessel Certifications
Petty Officer/Chief Petty Officer/Warrant Officer (ME)
 (Yacht, Tug, Fishing Vessel, Large Workboat, Stand-by Vessel,
 Seismic Survey Vessel, Oceanographic Vessel, Govt. Patrol Boat)



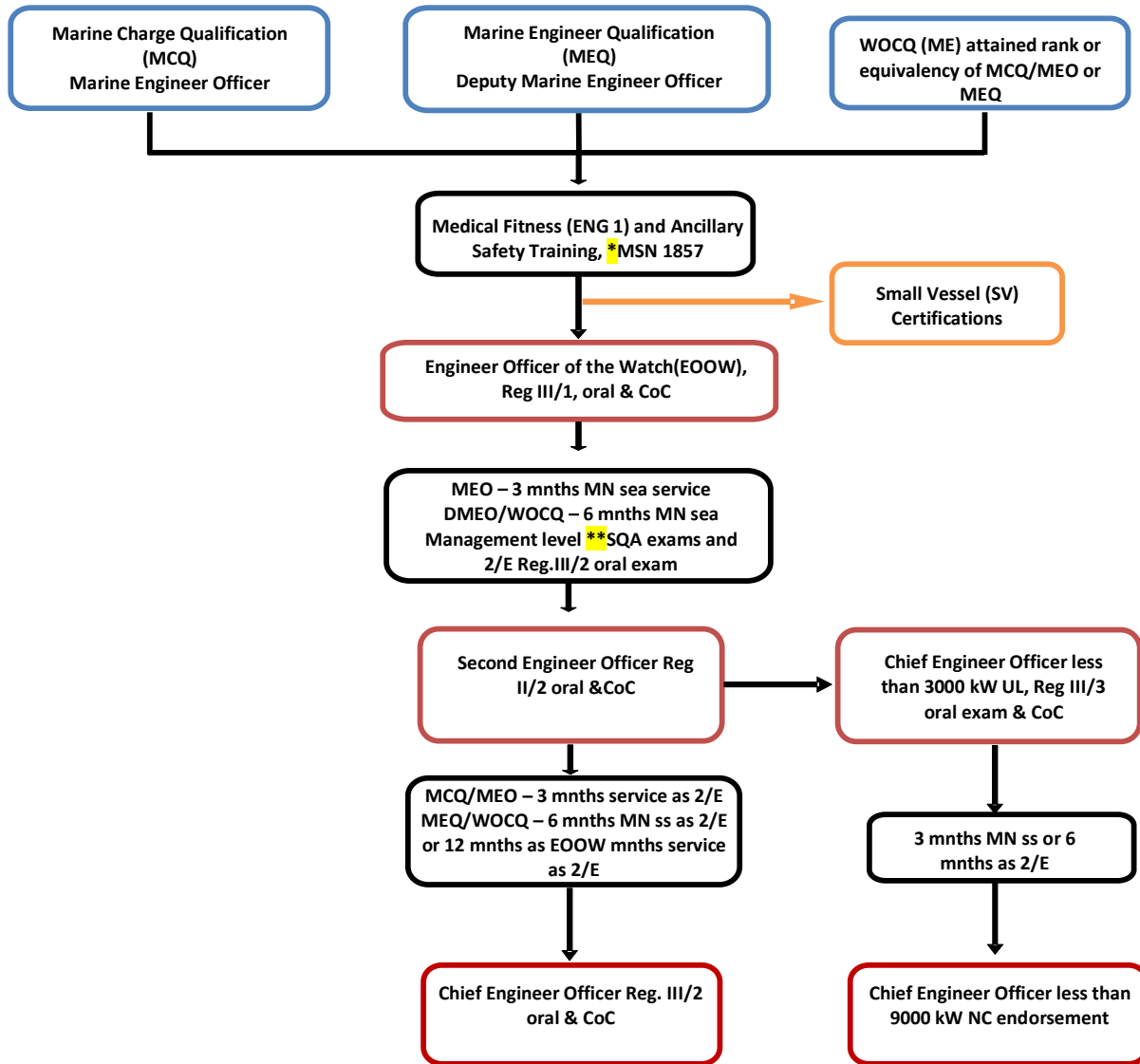
* Note 1 - 06 months of this service can be performed on ≥350 kW vessels and remaining 06 months must complete on ≥750 kW vessels,

** Note 2 - exemption will be available (MIN 524, MSN 1857),

*** Note 3 - MSNs and MINs are available on www.gov.uk/mca website. # sea service needs to complete on vessels of ≥350 kW.



Group 3 – ME Officers/WO

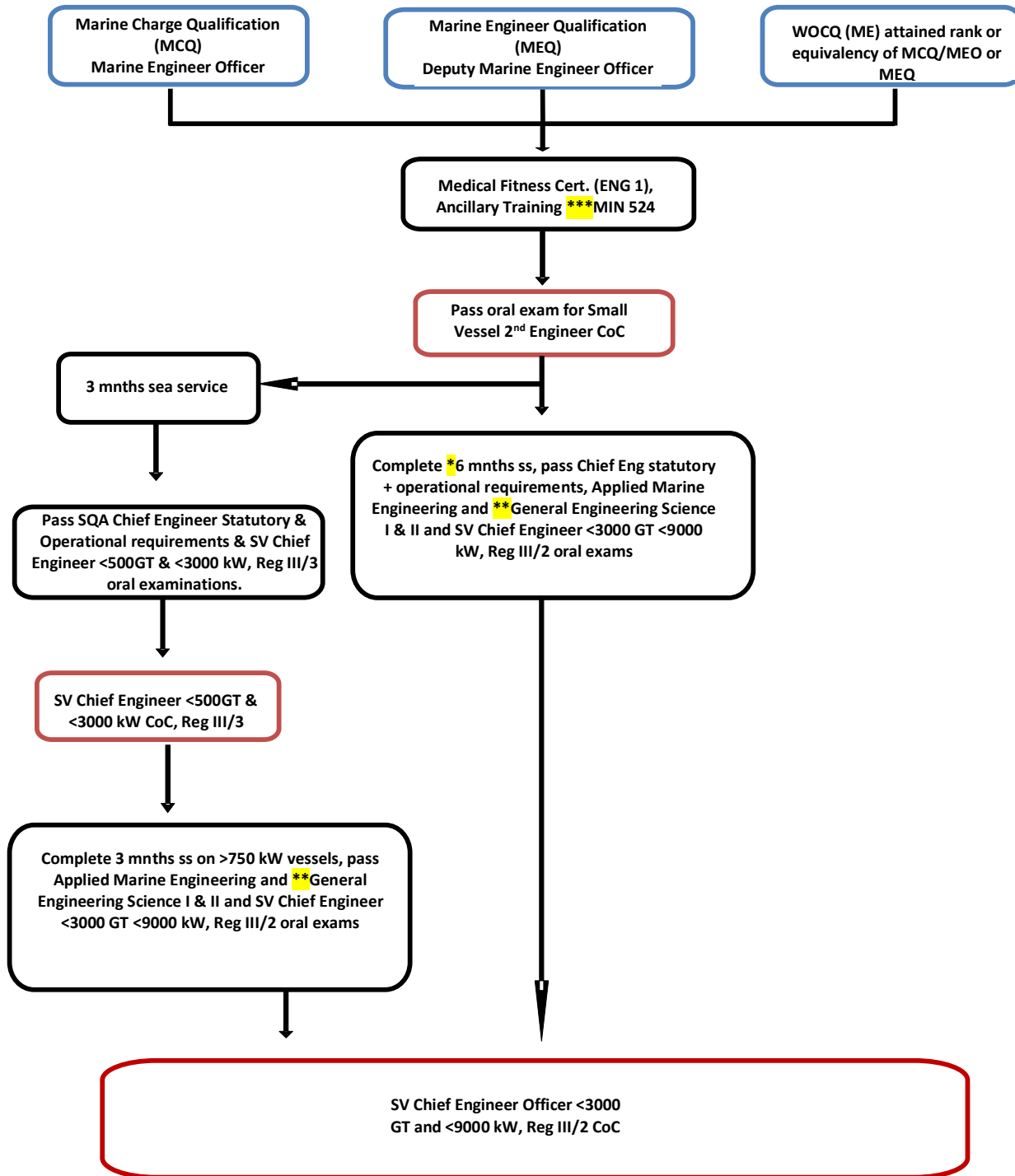


* Note 1 - MSNs (Merchant Shipping Notice) are available on www.gov.uk/mca website.

** Note 2 - Exemption from academic subjects are available except professional subject 'Engineering Knowledge (EK)'



**Group 3 - Small Vessel Certifications – ME Officers/WO
(Yacht, Tug, Fishing Vessel, Large Workboat, Stand-by Vessel,
Seismic Survey Vessel, Oceanographic Vessel, Govt. Patrol Boat)**



*3 months of this service can be performed on ≥350 kW vessels and remaining 06 months must complete on ≥750 kW vessels,

**exemption will be available (MIN 524, MSN 1857),

*** MSNs and MINs are available on www.gov.uk/mca website. # sea service needs to complete on vessels of ≥350 kW.

General requirements for serving at sea on Merchant Navy Vessels and for obtaining a Certificate of Competency.