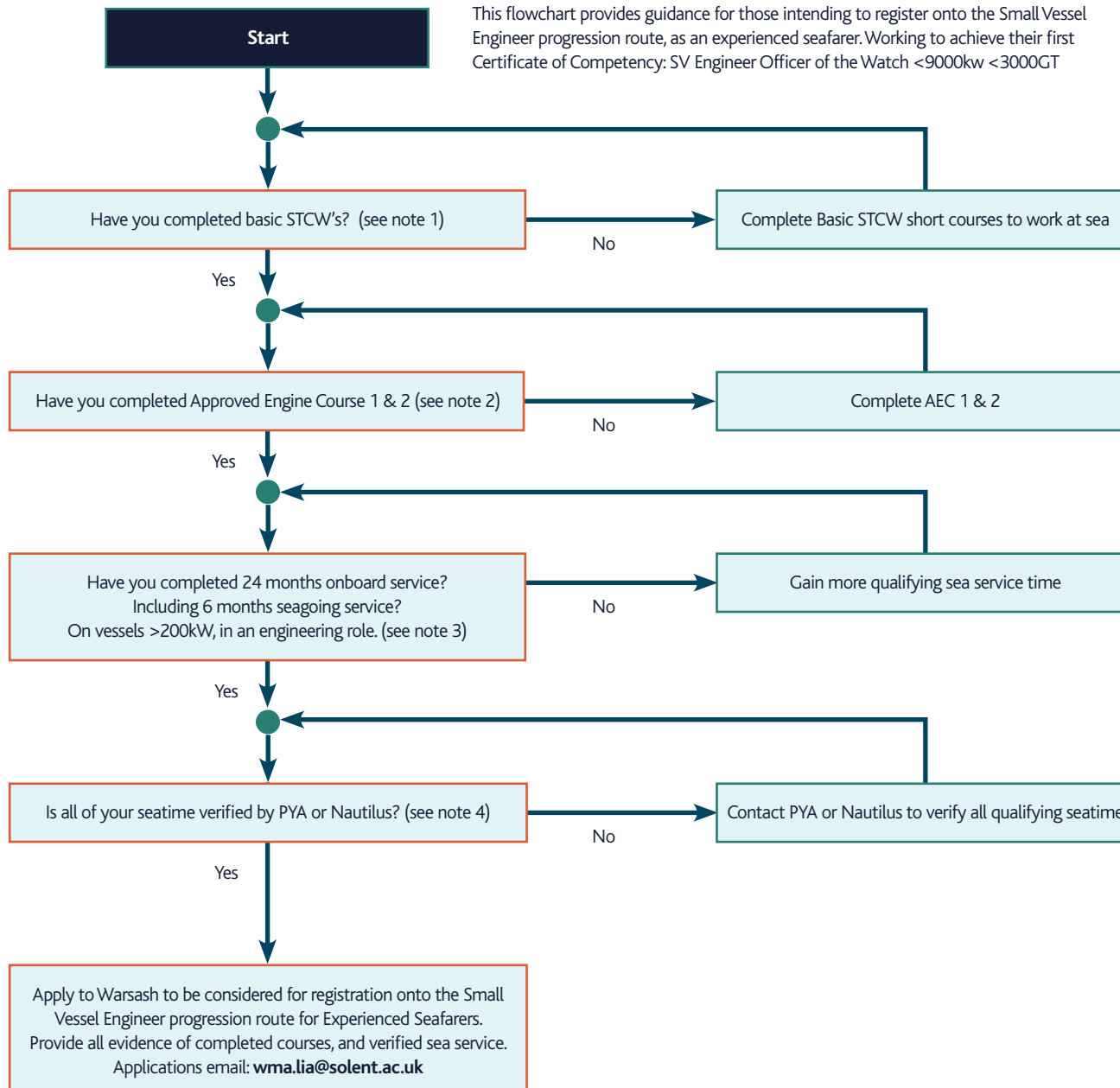


Small Vessel Engineer – Entry Onto Experienced Seafarer Route

This flowchart provides guidance for those intending to register onto the Small Vessel Engineer progression route, as an experienced seafarer. Working to achieve their first Certificate of Competency: SV Engineer Officer of the Watch <9000kw <3000GT



Note 1

Basic STCW's are as follows:
 Personal Survival Techniques
 Personal Safety & Social Responsibilities
 Fire Prevention & Fire Fighting
 Elementary First Aid
 Proficiency in Security Awareness
 Book: maritime.solent.ac.uk/courses/stcw-safety-and-security

Note 2

Approved Engine Course 1
 Approved Engine Course 2
 Book: maritime.solent.ac.uk/courses/engineering-and-electro-technical

Note 3

Engine room seagoing service consisting of cleaning duties only will not be accepted. Candidates must have experience in an assistant engineer/engine rating role or above.

Time spent in dual capacity roles such as "Deck/Engine", or "ETO/Engine" will be halved when being considered for entry onto the experienced seafarer route.

Note 4

Yacht sea service is to be verified by PYA or Nautilus as per MIN543
 Other vessel types may record sea service via methods described in MIN642

For further guidance on this process please consult the following M-Notices from the MCA:

- MSN1904 – Progression for SV Engineers
- MIN543 – Sea service verification
- MIN642 – SV CoC Guidance
- MSN1865 – STCW requirements

